

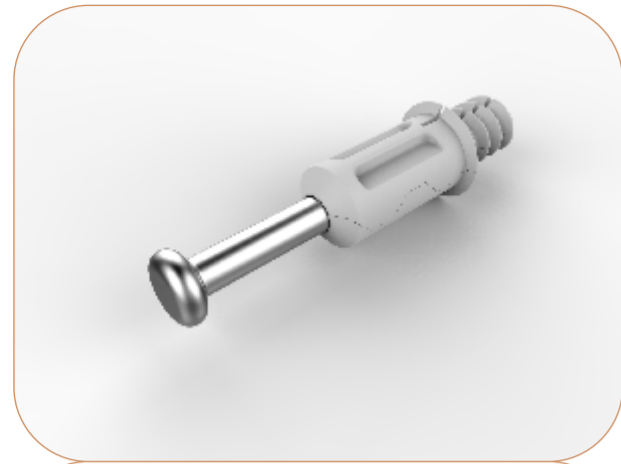
DIY 4 Draw - Hanging System



OIKO 

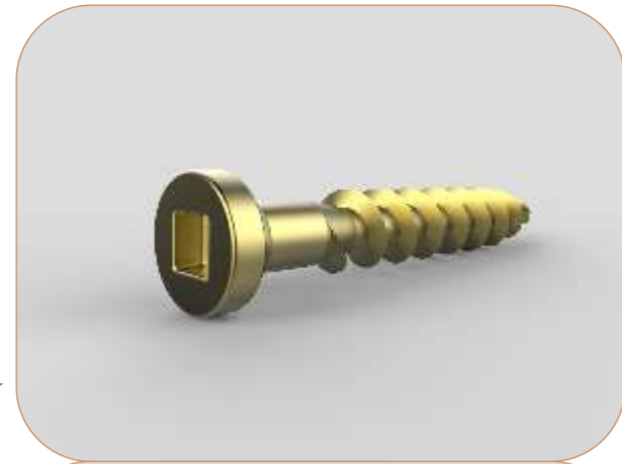
Code: (GWB-004-001)

STANDARD COMPONENTS INDEX



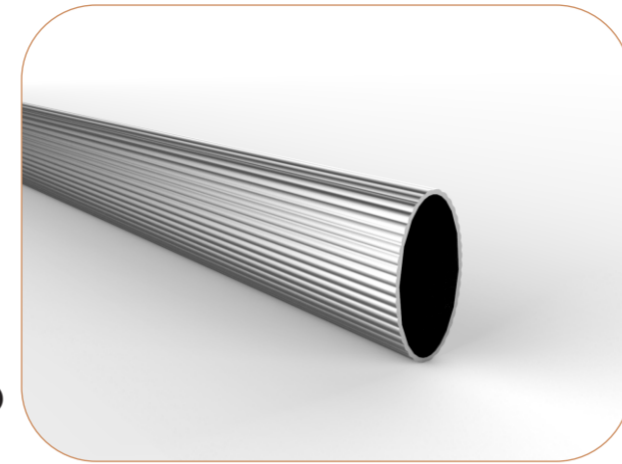
= X20

INDAUX EXPANDA PIN
34mm X 5mm



= X22

SQUARE HEAD WOOD
SCREW 6mm X 16mm



= X1

OVAL HANGING RAIL
861mm



= X20

INDAUX CAM - 15mm



= X8

SQUARE HEAD WOOD
SCREW 6mm X 30mm



= X40

BIRCH DOWEL
8mm X 30mm



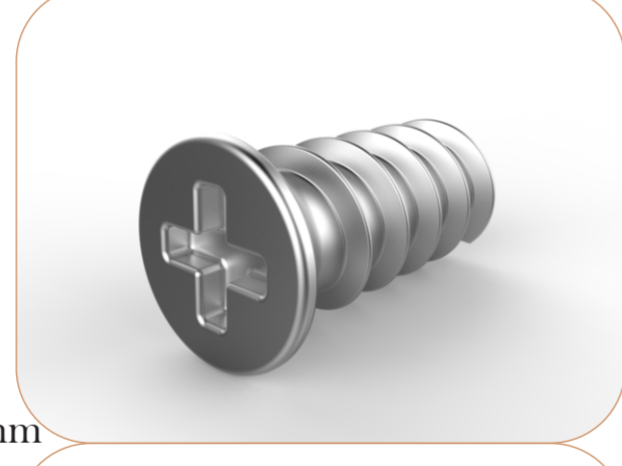
= X2

OVAL RAIL CAP



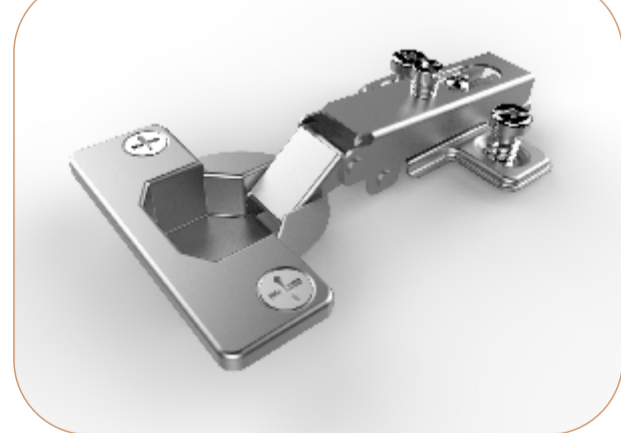
= X4

INDAUX MAMUL - 140mm



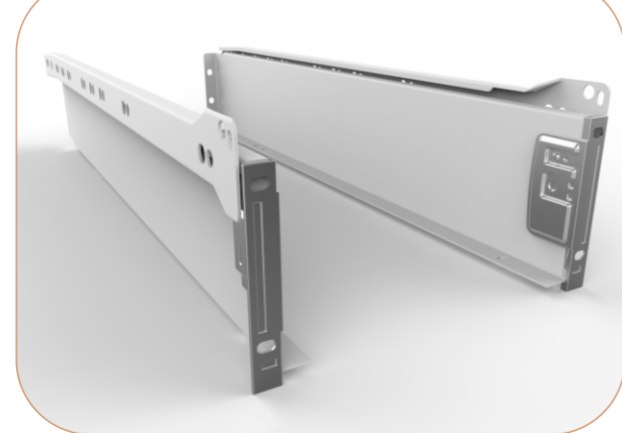
= X64

EURO SCREW
6 X 10MM



= X3

SDT HINGE CUP
110 DEGREES



= X4

METABOX DRAWER SET
85mm



REVISION		
CODE: GWB-004-001	TITLE: STANDARD COMPONENTS INDEX	
	PART NUMBER: (GWB-004-001)	SCALE : 1:8 (UOS)
METRIC ALL DIMENSIONS ARE IN mm	NAME	
	ENGINEERED BY: KOSTA KOUMENTAKOS	DATE 24-05-2016
	DRAWN BY: KOSTA KOUMENTAKOS	DATE 24-05-2016
3RD ANGLE	APPROVED BY: ANASTASIOS ASTERIOU	
	DATE 24-05-2016	

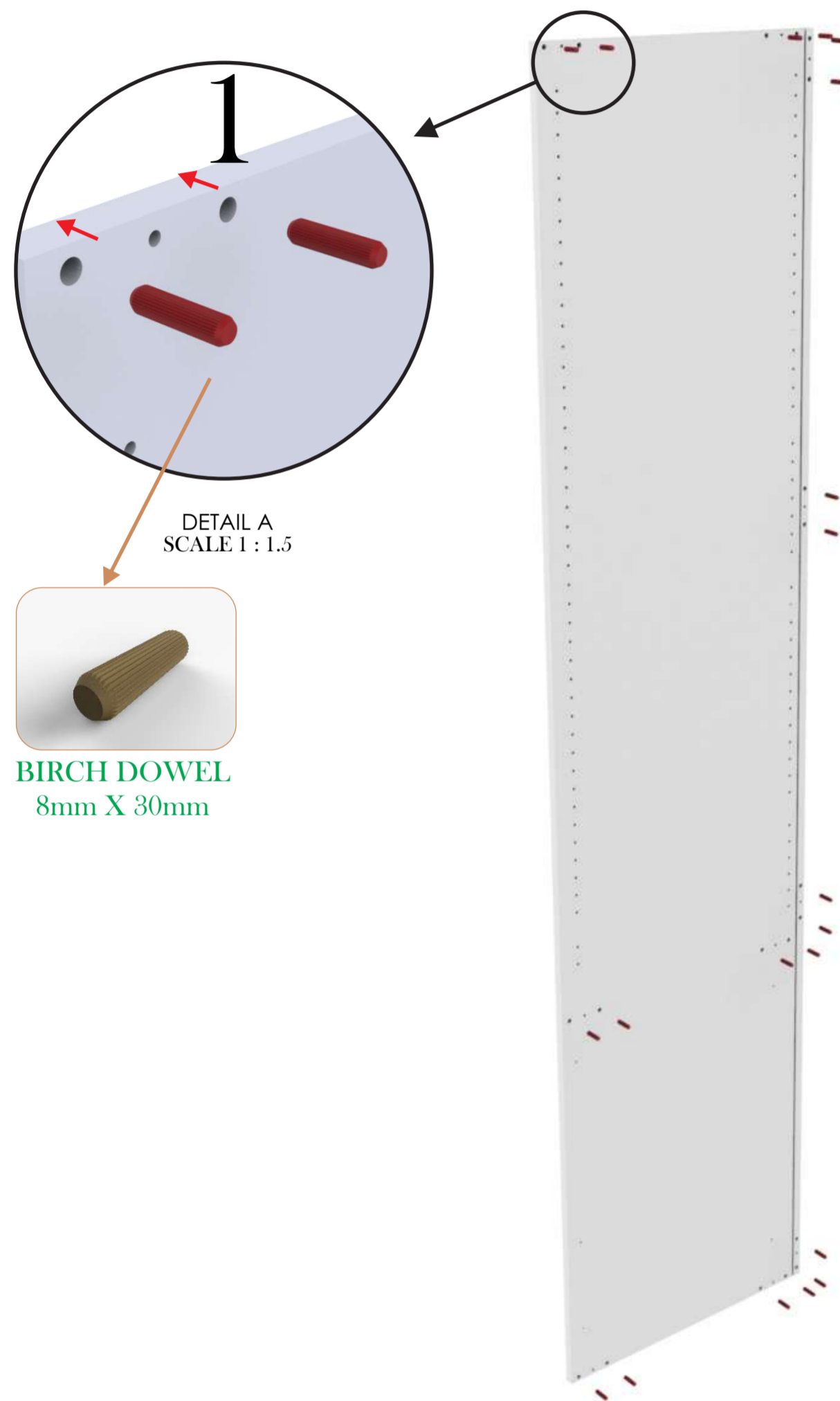


Designed By:
KSTENE
INDUSTRIAL DESIGN & ENGINEERING
INNOVATION INGENUITY INSPIRATION

* RESEMBLES CRITICAL DIMENSIONS
RESEMBLES ECR CHANGES

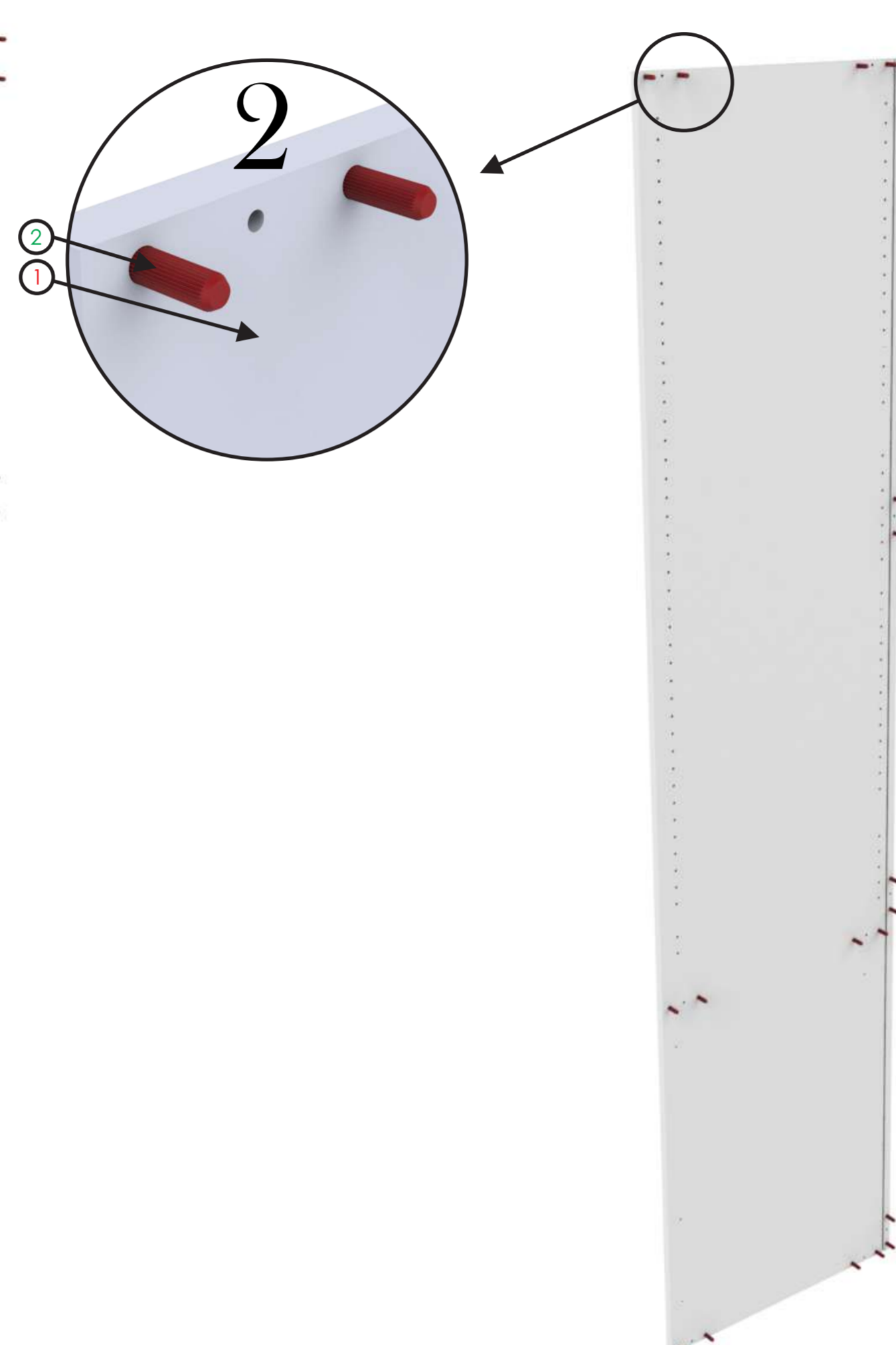
STEP 1

Place part **BIRCH DOWELS** into part **LEFT SIDE PANEL**, use the pre-drilled holes as shown in the pictures below:



NOTE:

As done in STEP 1, place part **BIRCH DOWELS** into part **LEFT SIDE PANEL**, use the pre-drilled holes as shown in the pictures below:



WARNING:

Do not hit the **BIRCH DOWELS** into place as they could damage the exterior of the **SIDE PANELS**.

DETAIL A
SCALE 1 : 1.5

BIRCH DOWEL
8mm X 30mm

ITEM NO:	DRAWING NUMBER:	DESCRIPTION:	MATERIAL:	QTY:
1	(GWB-004-001-002)	LEFT SIDE PANEL	16mm MELAMINE	1
2	N/A	BIRCH DOWEL - 8mm x 30mm	N/A	20

REVISION	
CODE: GWB-004-001	TITLE: LEFT AND RIGHT PANEL + DOWELS SUB ASS
METRIC ALL DIMENSIONS ARE IN mm	PART NUMBER: (GWB-004-001-002) SCALE : 1:8 (UOS)
	NAME DATE
	ENGINEERED BY: KOSTA KOUMENTAKOS 24-05-2016
	DRAWN BY: KOSTA KOUMENTAKOS 24-05-2016
	APPROVED BY: ANASTASIOS ASTERIOU 24-05-2016



Designed By:
KSTENE
INDUSTRIAL DESIGN & ENGINEERING
INNOVATION INGENUITY INSPIRATION

* RESEMBLES CRITICAL DIMENSIONS
RESEMBLES ECR CHANGES

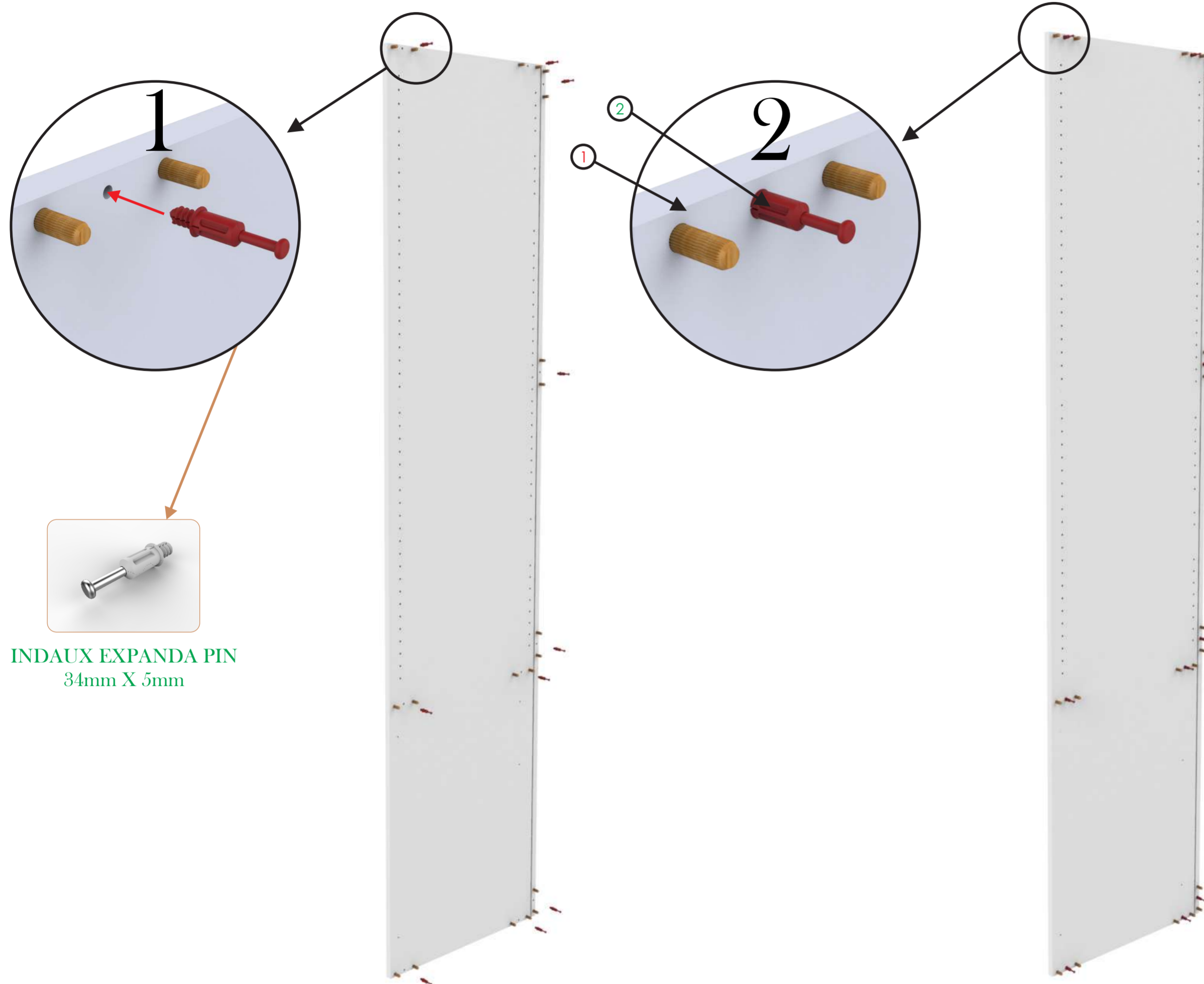


STEP 2

Place part **INDAUX EXPANDA PIN** into part **LEFT AND RIGHT SIDE PANEL + DOWELS SUB ASS**, use the pre-drilled holes as shown in the pictures below:

NOTE:

You should have 2 sub assemblies like this.



INDAUX EXPANDA PIN
34mm X 5mm

ITEM NO:	DRAWING NUMBER:	DESCRIPTION:	MATERIAL:	QTY:
1	(GWB-004-001-002) SUB ASS	LEFT AND RIGHT PANEL + DOWELS SUB ASS	N/A	1
2	N/A	INDAUX EXPANDA PIN - 34mm X 5mm	N/A	10

REVISION	
CODE: GWB-004-001	TITLE: LEFT AND RIGHT PANEL + EXPANA PIN SUB ASS
METRIC ALL DIMENSIONS ARE IN mm	PART NUMBER: (GWB-004-001-003) SCALE : 1:8 (UOS)
	NAME DATE
	ENGINEERED BY: KOSTA KOUMENTAKOS 24-05-2016
	DRAWN BY: KOSTA KOUMENTAKOS 24-05-2016
	APPROVED BY: ANASTASIOS ASTERIOU 24-05-2016



Designed By:
KSTENE
INDUSTRIAL DESIGN & ENGINEERING
INNOVATION INGENUITY INSPIRATION

* RESEMBLES CRITICAL DIMENSIONS
RESEMBLES ECR CHANGES



ECR: N/A DATE: 24-02-2016

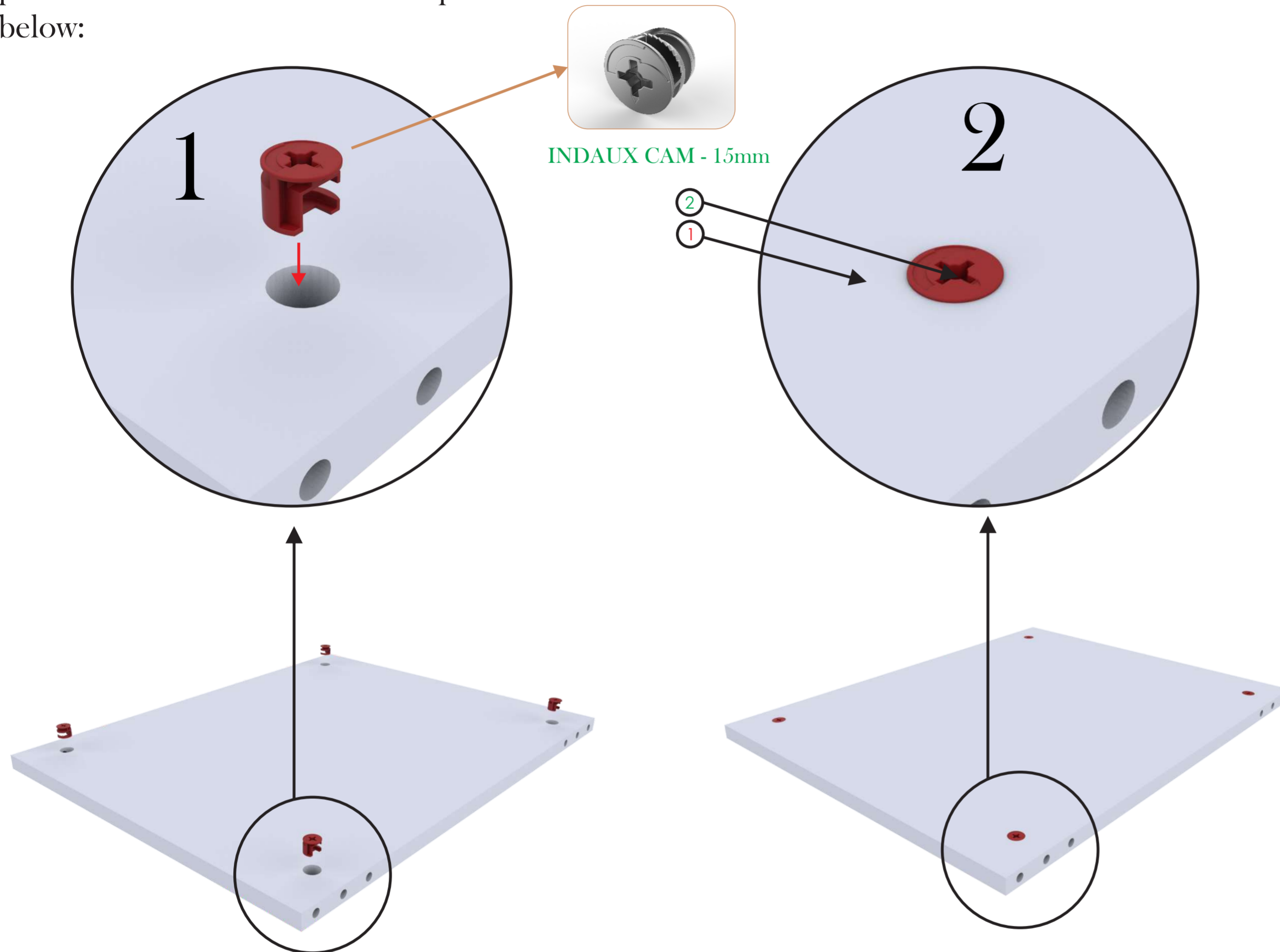
LEVEL: 1

© ALL COPYRIGHTS BELONG TO OIKO, DATE 24-04-2016

PAGE: 3 OF 15

STEP 3

Place part **INDAUX CAM** into part **TOP AND BOTTOM PANEL**, use the pre-drilled holes as shown in the pictures below:

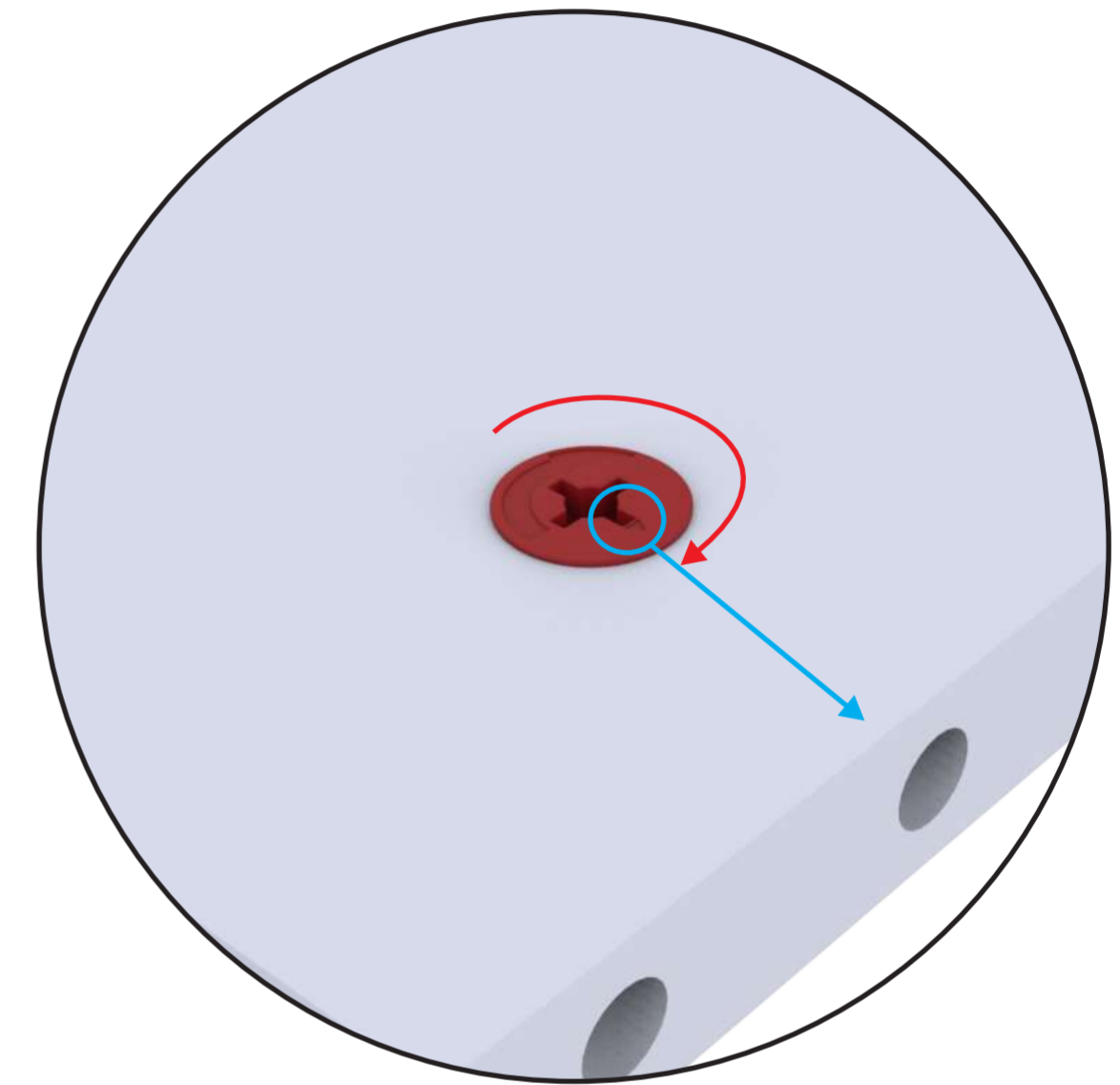


NOTE:

You should have 3 sub assemblies like this.

STEP 4

Turn part **INDAUX CAM** so that the arrow faces the edge of the board where the INDAUX EXPANDA PIN hole has been drilled. See below:



ITEM NO:	DRAWING NUMBER:	DESCRIPTION:	MATERIAL:	QTY:
1	(GWB-004-001-004)	TOP & BOTTOM PANEL	16mm MELAMINE	1
2	N/A	INDAUX CAM - 15mm	N/A	4



Designed By:
KSTENE
INDUSTRIAL DESIGN & ENGINEERING
INNOVATION INGENUITY INSPIRATION

* RESEMBLES CRITICAL DIMENSIONS
RESEMBLES ECR CHANGES



3RD ANGLE

REVISION	
TITLE: TOP AND BOTTOM PANEL + CAM SUB ASS	
PART NUMBER: (GWB-004-001-004)	SCALE : 1:8 (UOS)
NAME	DATE
ENGINEERED BY: KOSTA KOUMENTAKOS	24-05-2016
DRAWN BY: KOSTA KOUMENTAKOS	24-05-2016
APPROVED BY: ANASTASIOS ASTERIOU	24-05-2016

ECR: N/A DATE: 24-02-2016

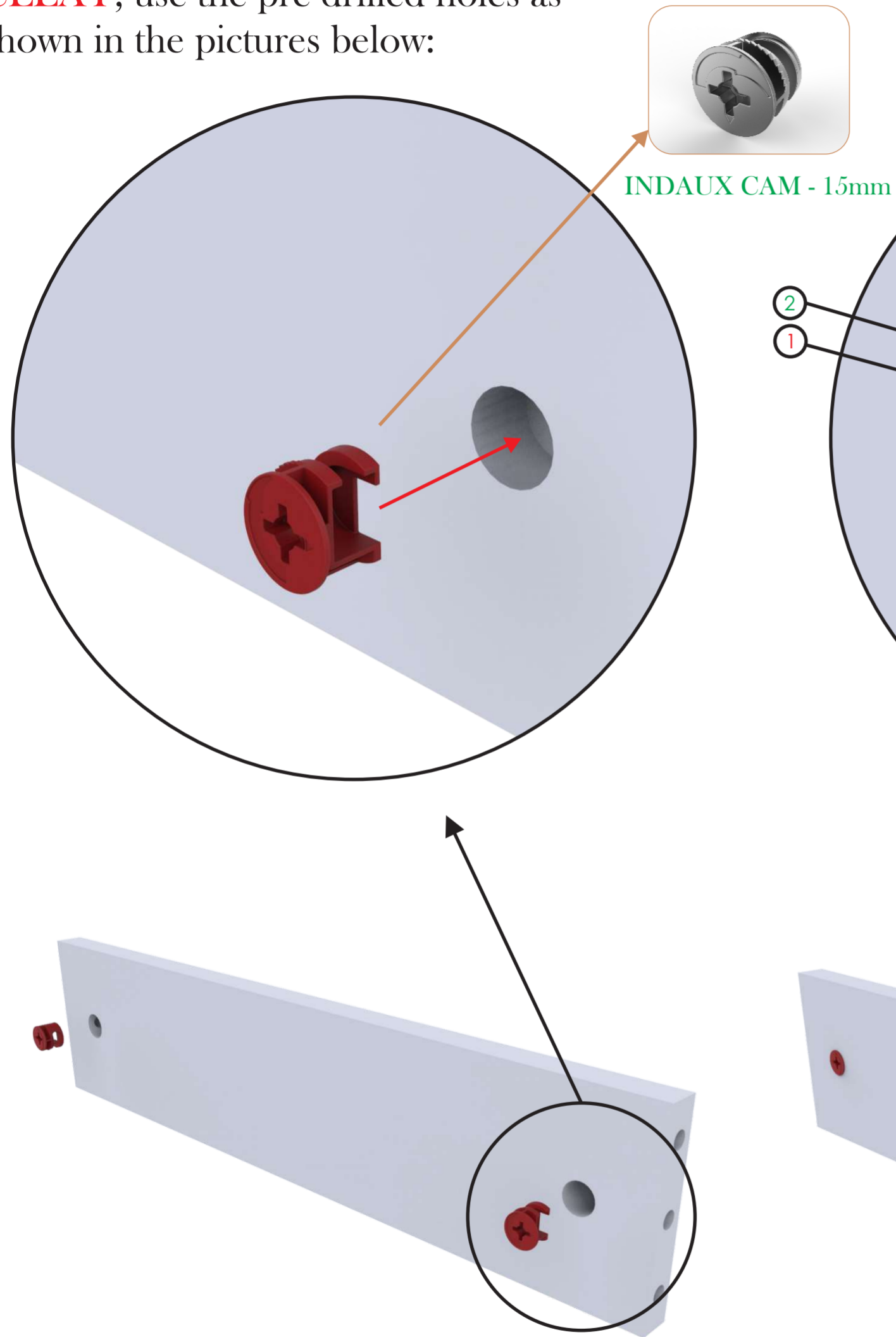
LEVEL: 1

© ALL COPYRIGHTS BELONG TO OIKO, DATE 24-045-2016

PAGE: 4 OF 15

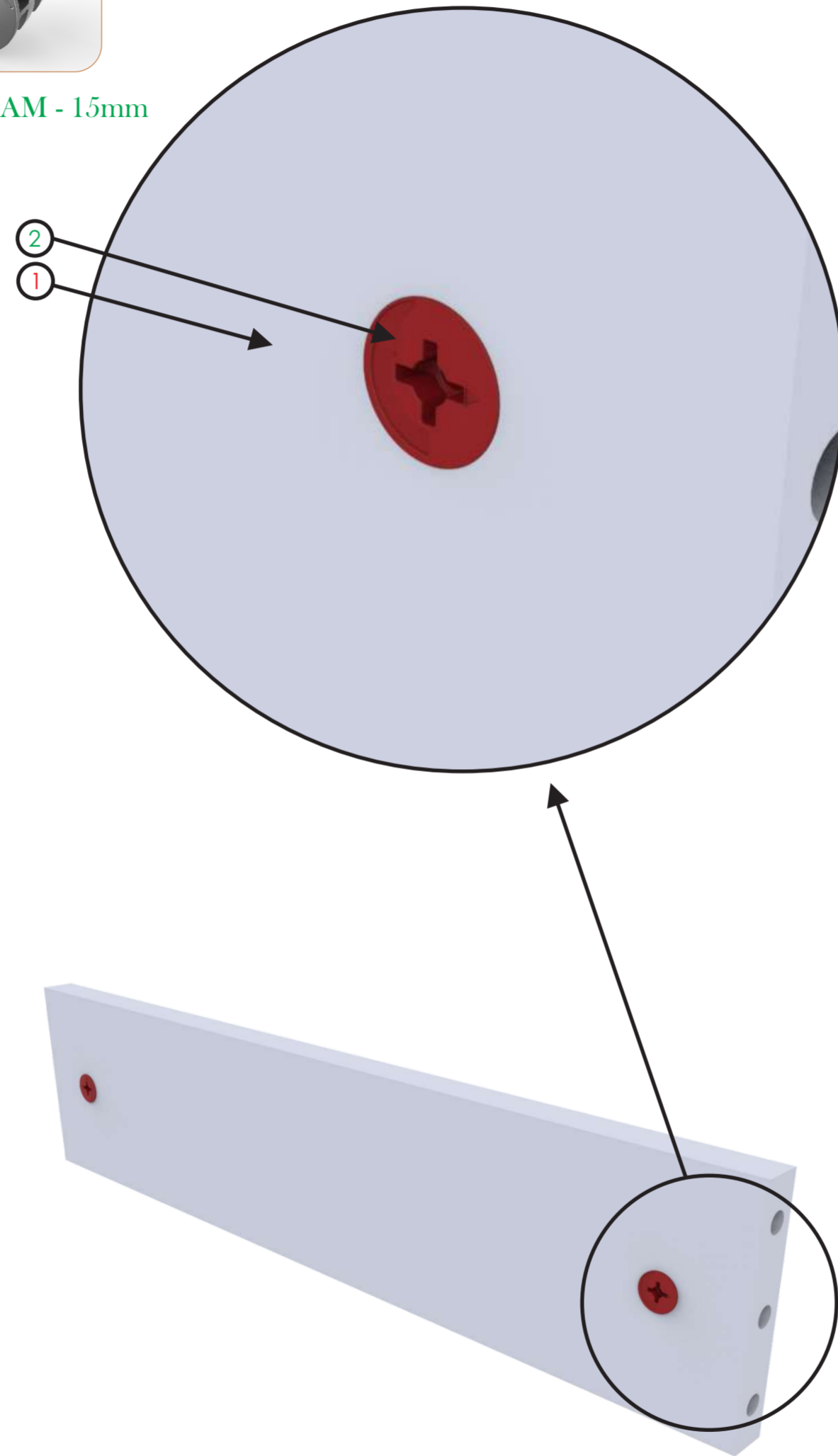
STEP 5

Place part **INDAUX CAM** into part **CLEAT**, use the pre-drilled holes as shown in the pictures below:



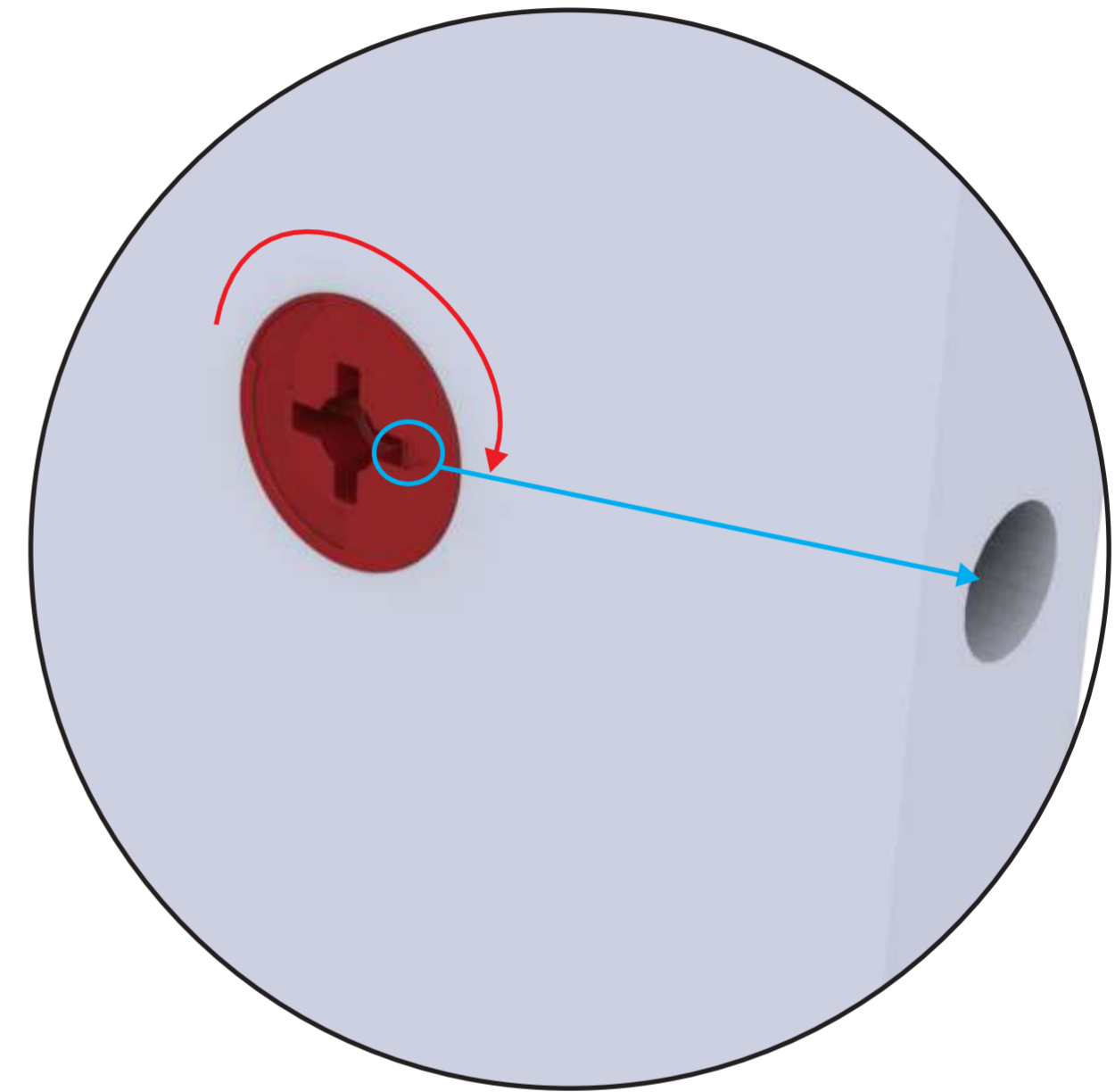
NOTE:

You should have 4 sub assemblies like this.



STEP 6

Turn part **INDAUX CAM** so that the arrow faces the edge of the board where the **INDAUX EXPANDA PIN** hole has been drilled. See below:



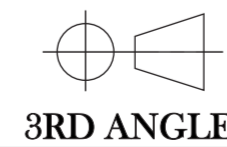
ITEM NO:	DRAWING NUMBER:	DESCRIPTION:	MATERIAL:	QTY:
1	(GWB-004-001-006)	CLEAT	16mm MELAMINE	1
2	N/A	INDAUX CAM - 15mm	N/A	2

REVISION		
CODE: GWB-004-001	TITLE: CLEAT + CAM SUB ASS	
	PART NUMBER: (GWB-004-001-005) SUB ASS	SCALE : 1:8 (UOS)
METRIC ALL DIMENSIONS ARE IN mm	NAME	
	ENGINEERED BY: KOSTA KOUMENTAKOS	DATE 24-05-2016
	DRAWN BY: KOSTA KOUMENTAKOS	DATE 24-05-2016
3RD ANGLE	APPROVED BY: ANASTASIOS ASTERIOU	
	DATE 24-05-2016	



Designed By:
KSTENE
INDUSTRIAL DESIGN & ENGINEERING
INNOVATION INGENUITY INSPIRATION

* RESEMBLES CRITICAL DIMENSIONS
RESEMBLES ECR CHANGES



STEP 7

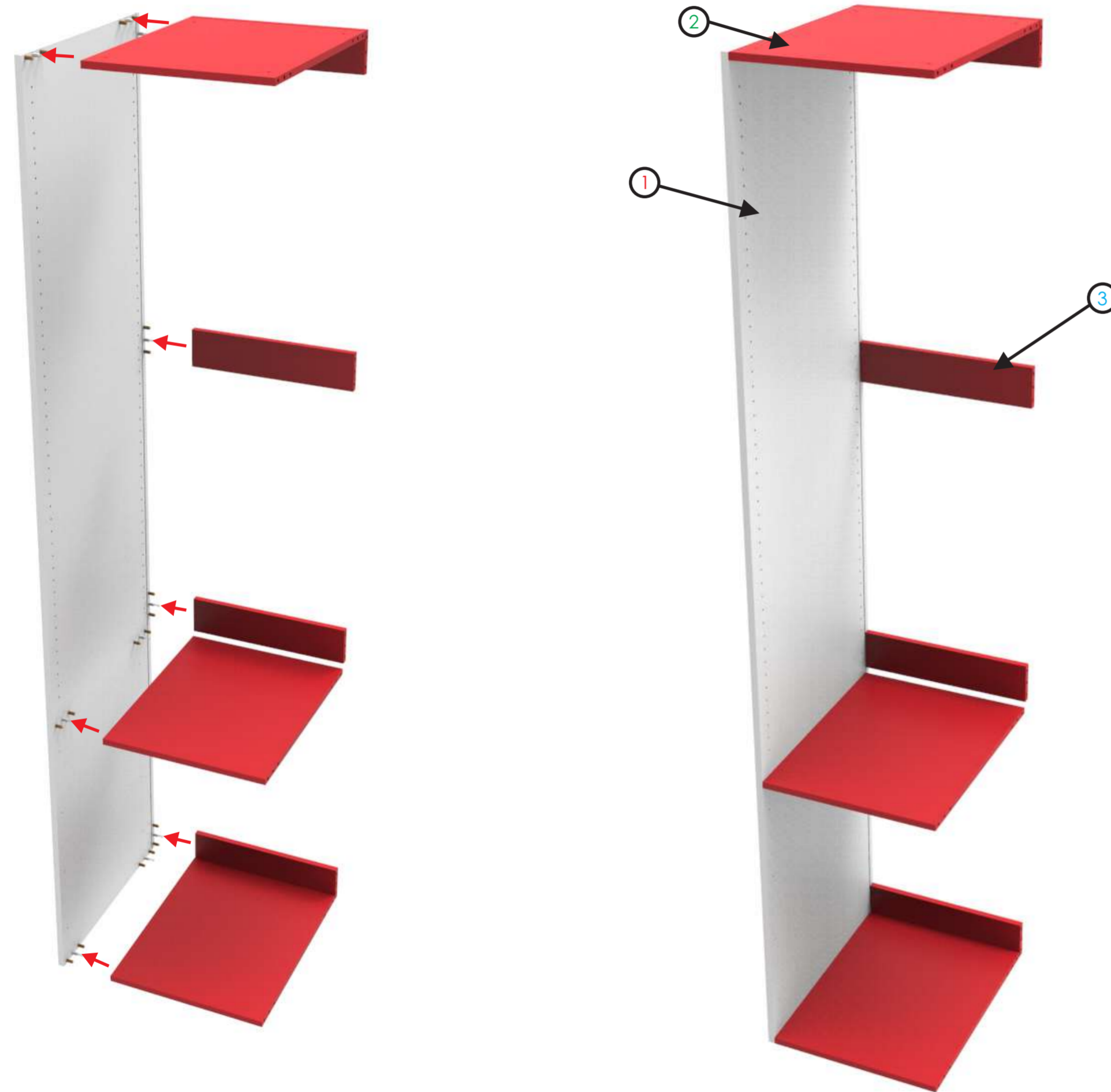
Assemble sub assemblies

CLEAT + CAM SUB ASS

TOP AND BOTTOM PANEL + CAM SUB ASS

LEFT AND RIGHT PANEL + EXPANDA PIN SUB ASS

as shown below:

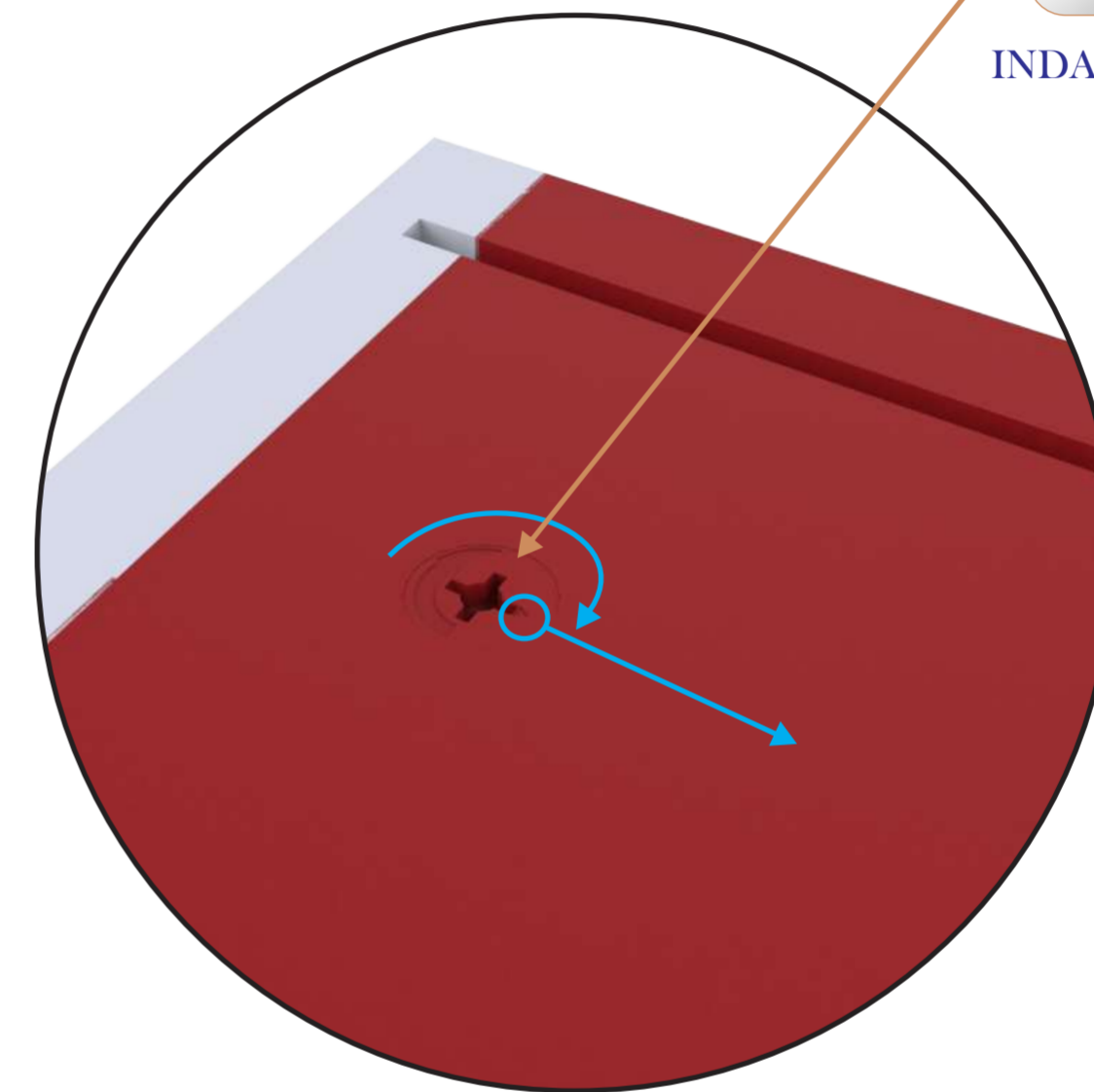


STEP 8

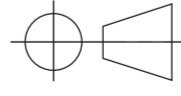
Now turn the **INDAUX CAM - 15mm** 180° clockwise to fasten all the panels together.



INDAUX CAM - 15mm



ITEM NO:	DRAWING NUMBER:	DESCRIPTION:	MATERIAL:	QTY:
1	(GWB-004-001-003) SUB ASS	LEFT AND RIGHT PANEL + EXPANDA PIN SUB ASS	N/A	1
2	(GWB-004-001-004) SUB ASS	TOP AND BOTTOM PANEL + CAM SUB ASS	N/A	3
3	(GWB-004-001-005) SUB ASS	CLEAT + CAM SUB ASS	N/A	4

REVISION	
CODE: GWB-004-001	TITLE: SIDES + CLEATS + TOP AND BOTTOM PANEL SUB ASS
METRIC ALL DIMENSIONS ARE IN mm	PART NUMBER: (GWB-004-001-006) SUB ASS SCALE : 1:8 (UOS)
 3RD ANGLE	NAME
	ENGINEERED BY: KOSTA KOUMENTAKOS 24-05-2016
	DRAWN BY: KOSTA KOUMENTAKOS 24-05-2016
	APPROVED BY: ANASTASIOS ASTERIOU 24-05-2016



Designed By:
KSTENE
INDUSTRIAL DESIGN & ENGINEERING
INNOVATION INGENUITY INSPIRATION

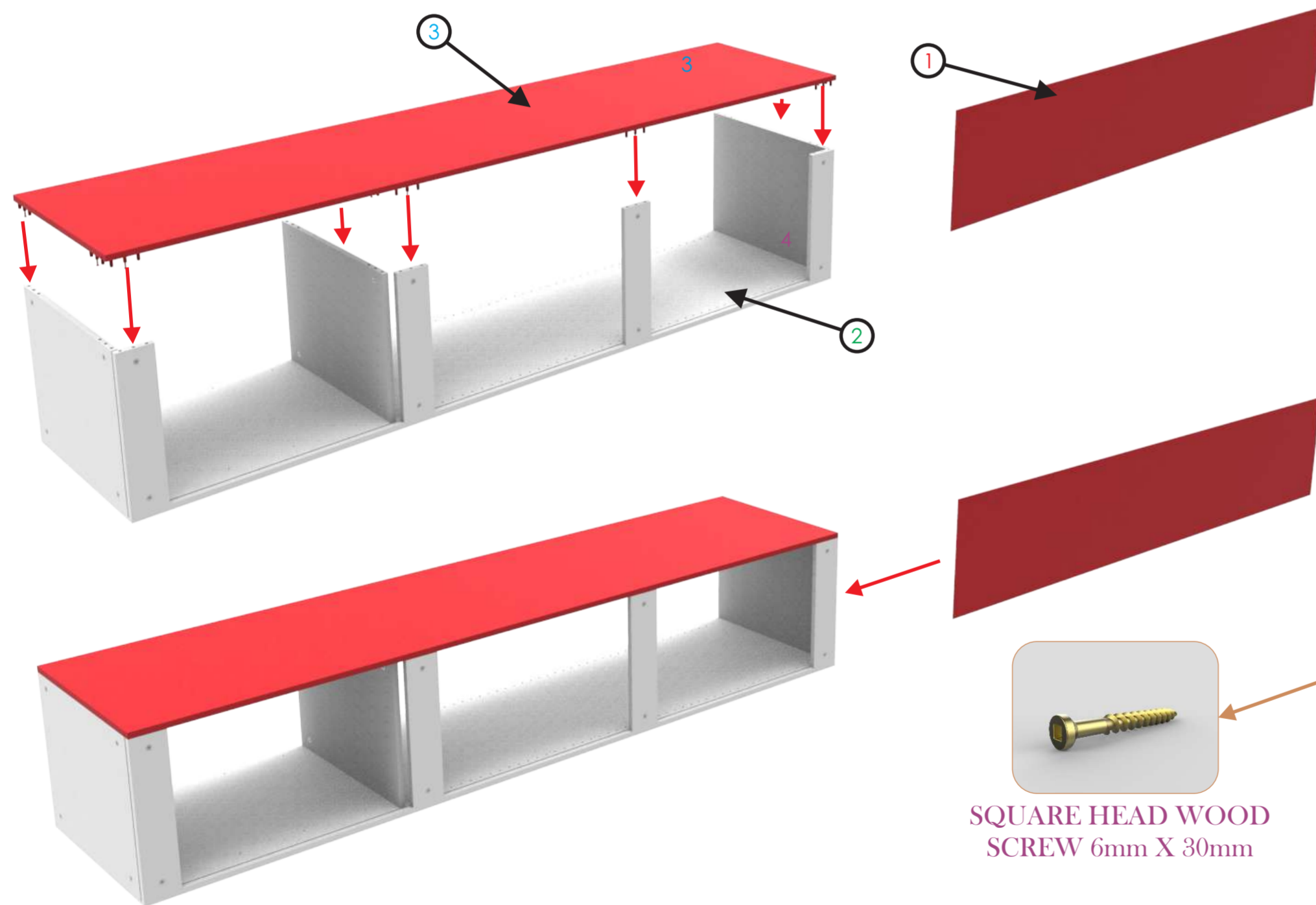
* RESEMBLES CRITICAL DIMENSIONS
RESEMBLES ECR CHANGES

STEP 9

Place assembly **LEFT AND RIGHT PANEL + DOWELS SUB ASS** into assembly **SIDES + CLEATS + TOP AND BOTTOM PANEL SUB ASS** but do not fasten the **INDAUX CAM**. See below:



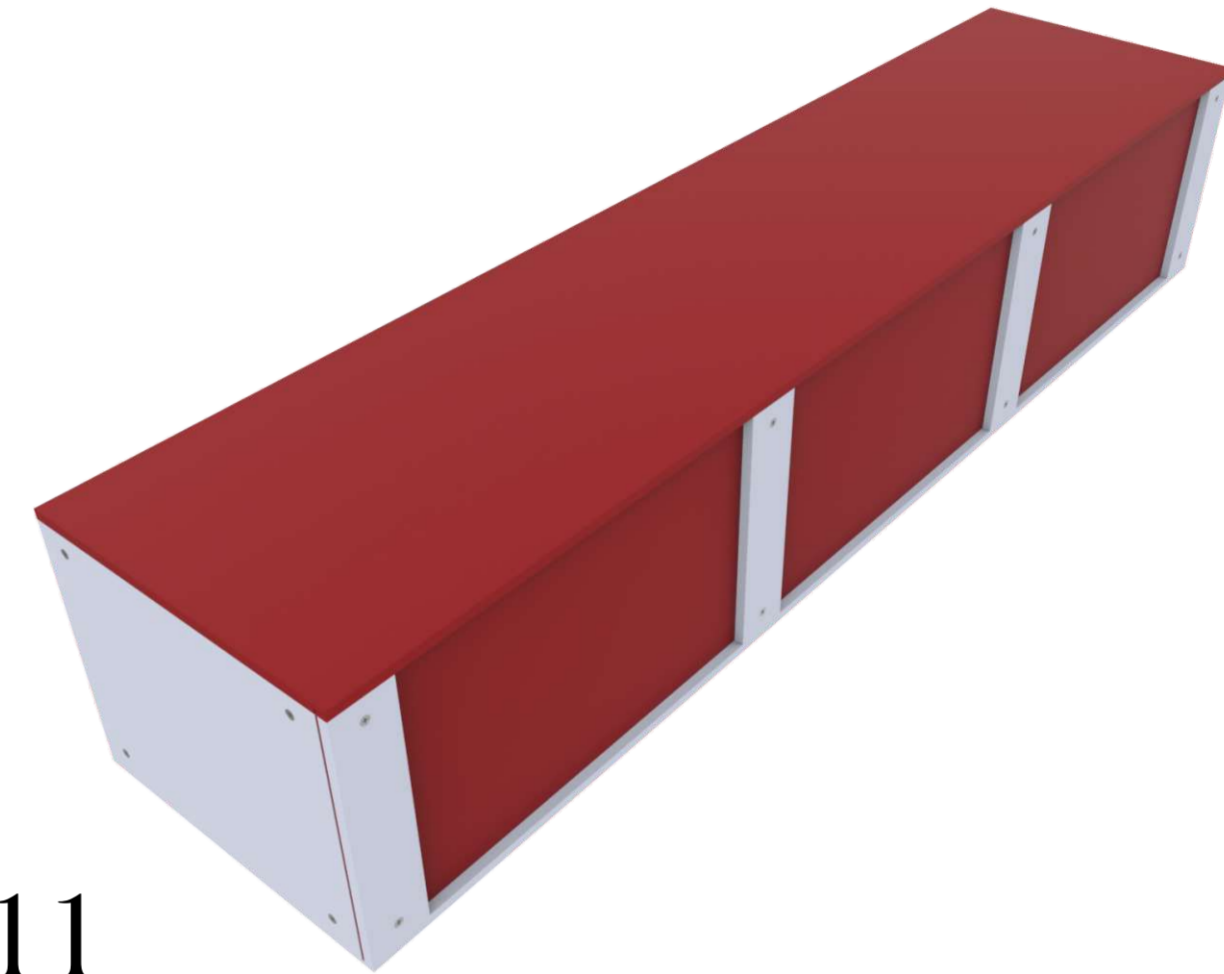
INDAUX CAM - 15mm



SQUARE HEAD WOOD SCREW 6mm X 30mm

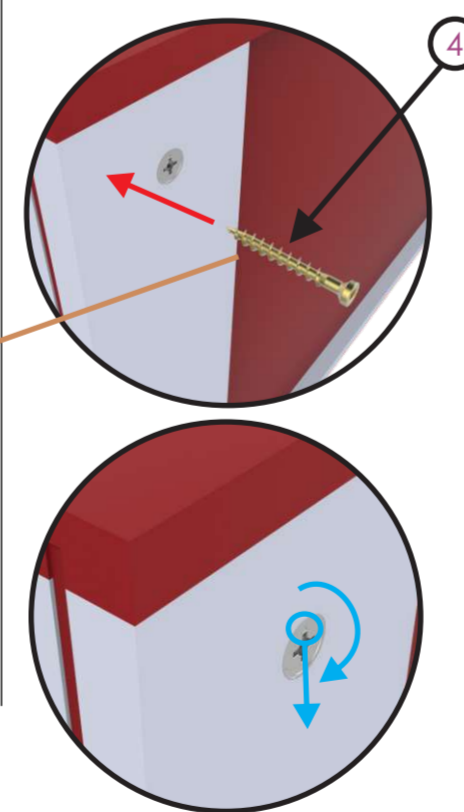
STEP 10

Slide part **BACKING** into your current assembly. Gently knock into the groove provided on the side panels, make sure that all the parts sit flush to one another. Your assembly should look like the picture below:



STEP 11

Fasten the **INDAUX CAMS** to secure assembly **LEFT AND RIGHT PANEL + DOWELS SUB ASS**. Finally screw in the **SQUARE HEAD WOOD SCREW** as seen in the pictures below:



ITEM NO:	DRAWING NUMBER:	DESCRIPTION:	MATERIAL:	QTY:
1	(GWB-004-001-003)	BACKING	4mm MELAMINE	1
2	(GWB-004-001-002) SUB ASS	LEFT AND RIGHT PANEL + DOWELS SUB ASS	N/A	1
3	(GWB-004-001-006) SUB ASS	SIDES + CLEATS + TOP AND BOTTOM PANEL SUB ASS	N/A	1
4	N/A	SQUARE HEAD WOOD SCREW 6mm X 30mm	N/A	4



Designed By:
KSTENE
INDUSTRIAL DESIGN & ENGINEERING
INNOVATION INGENUITY INSPIRATION

* RESEMBLES CRITICAL DIMENSIONS
RESEMBLES ECR CHANGES



3RD ANGLE

REVISION	
CODE: GWB-004-001	TITLE: BACKING BOARD + RIGHT PANEL SUB ASS
METRIC ALL DIMENSIONS ARE IN mm	PART NUMBER: (GWB-004-001-007) SUB ASS SCALE : 1:8 (UOS)
	NAME DATE
	ENGINEERED BY: KOSTA KOUMENTAKOS 24-05-2016
	DRAWN BY: KOSTA KOUMENTAKOS 24-05-2016
	APPROVED BY: ANASTASIOS ASTERIOU 24-05-2016

ECR: N/A DATE: 24-02-2016

LEVEL: 1

© ALL COPYRIGHTS BELONG TO OIKO, DATE 24-04-2016

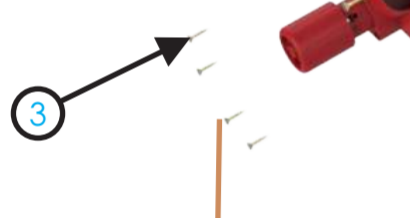
PAGE: 7 OF 15

STEP 12

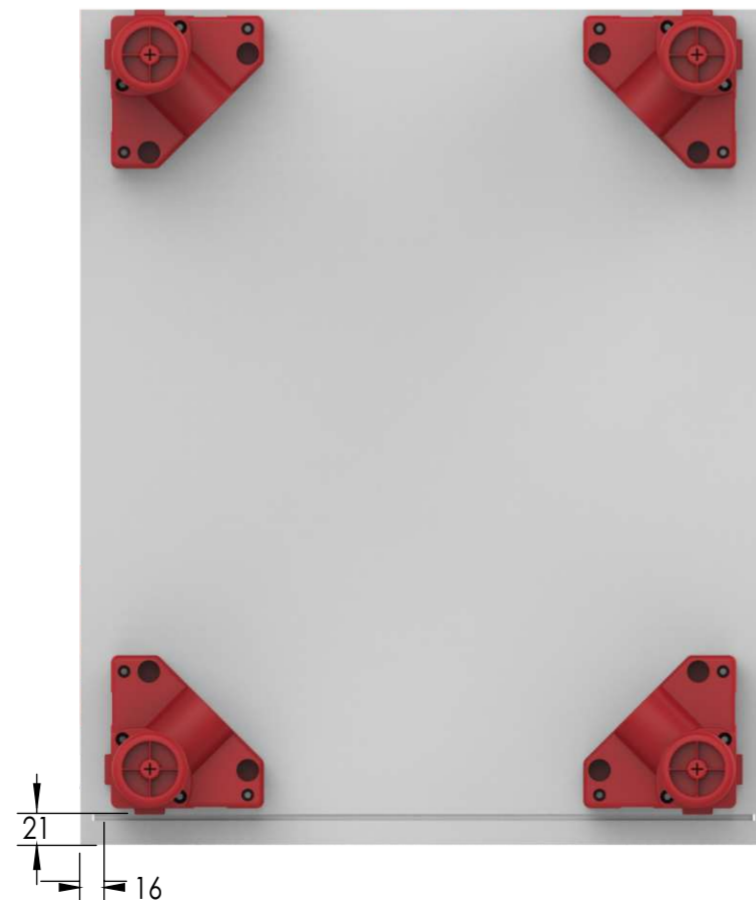
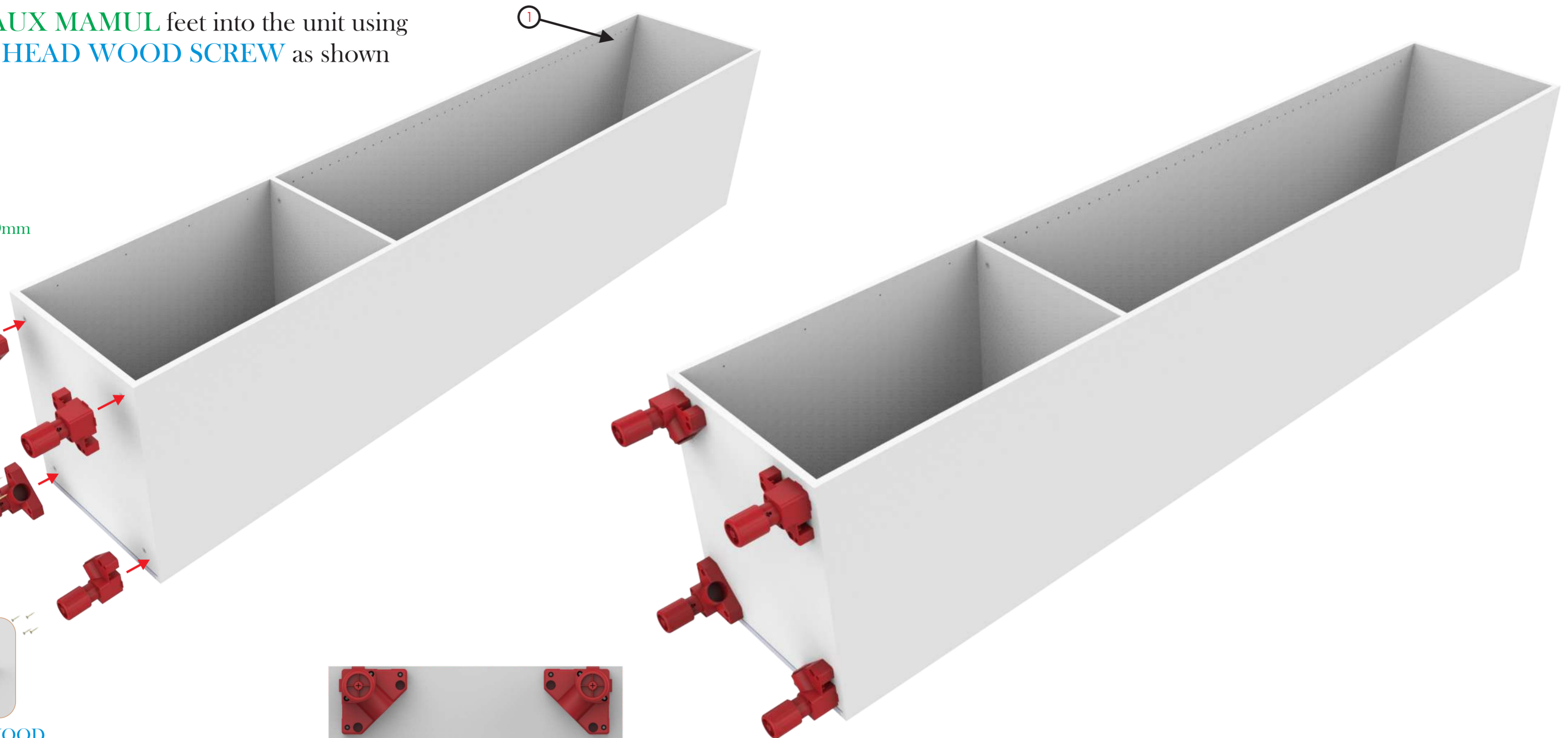
Screw the **INDAUX MAMUL** feet into the unit using parts **SQUARE HEAD WOOD SCREW** as shown below:



INDAUX MAMUL - 140mm



SQUARE HEAD WOOD SCREW 6mm X 16mm



WARNING

Assemble the **INDAUX MAMUL** feet in the positioning/spacing as shown in the picture on the right:

ITEM NO:	DRAWING NUMBER:	DESCRIPTION:	MATERIAL:	QTY:
1	(GWB-004-001-007) SUB ASS	BACKING BOARD + RIGHT PANEL SUB ASS	N/A	1
2	N/A	INDAUX MAMUL - 140mm	N/A	4
3	N/A	SQUARE HEAD WOOD SCREW 6mm X 12mm	N/A	16

REVISION	
CODE: GWB-004-001	TITLE: FEET SUB ASS
METRIC ALL DIMENSIONS ARE IN mm	PART NUMBER: (GWB-004-001-008) SUB ASS
 3RD ANGLE	SCALE : 1:8 (UOS)
	NAME
	DATE
ENGINEERED BY: KOSTA KOUMENTAKOS	24-05-2016
DRAWN BY: KOSTA KOUMENTAKOS	24-05-2016
APPROVED BY: ANASTASIOS ASTERIOU	24-05-2016



Designed By:
KSTENE
INDUSTRIAL DESIGN & ENGINEERING
INNOVATION INGENUITY INSPIRATION

* RESEMBLES CRITICAL DIMENSIONS
RESEMBLES ECR CHANGES



ECR: N/A DATE: 24-02-2016

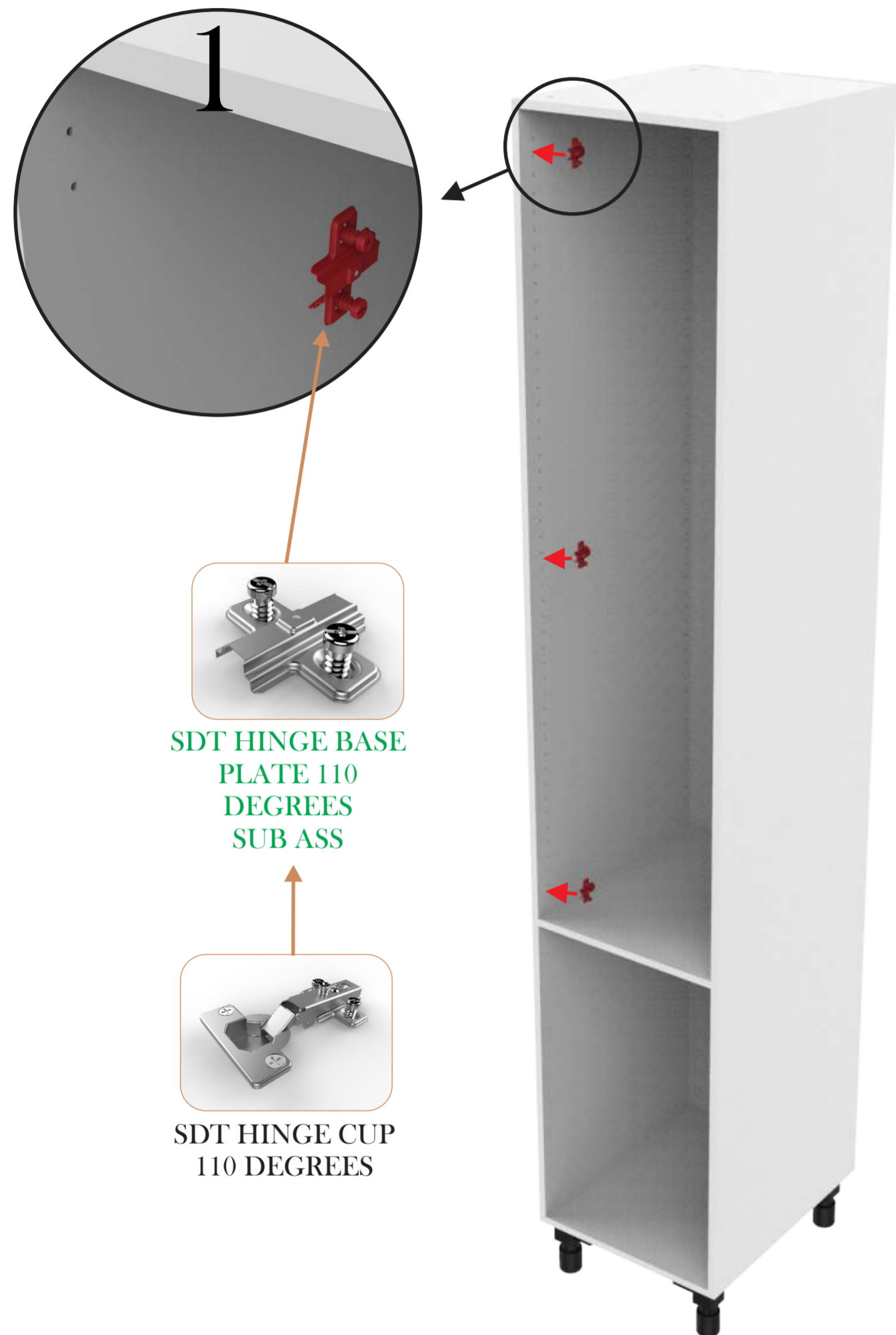
LEVEL: 1

© ALL COPYRIGHTS BELONG TO OIKO, DATE 24-045-2016

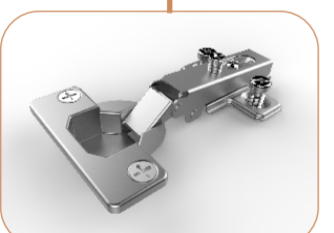
PAGE: 8 OF 15

STEP 13

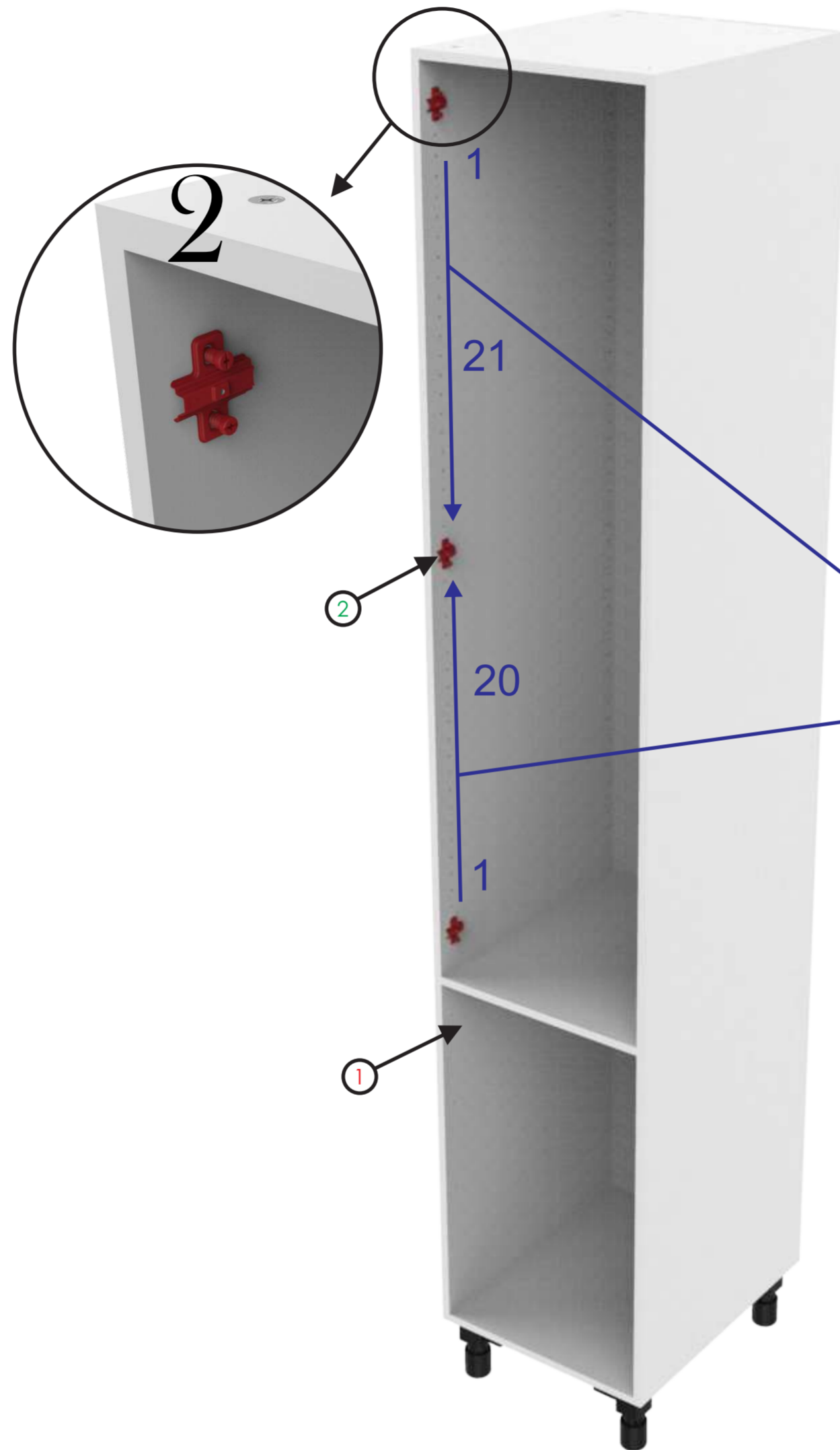
Screw parts **SDT HINGE BASE PLATE 110 DEGREES SUB ASS** into the unit as shown below:



SDT HINGE BASE PLATE 110 DEGREES SUB ASS



SDT HINGE CUP 110 DEGREES



NOTE:

Count 21 holes from the top and 20 holes from the bottom of the first line of holes. This is where you will assemble the **SDT HINGE BASE PLATE 110 DEGREES SUB ASS**

ITEM NO:	DRAWING NUMBER:	DESCRIPTION:	MATERIAL:	QTY:
1	(GWB-004-001-008) SUB ASS	FEET SUB ASS	N/A	1
2	N/A	SDT HINGE BASE PLATE 110 DEGREES SUB ASS	N/A	3

REVISION		
CODE: GWB-004-001	TITLE: HINGE BASE PLATE SUB ASS	
	PART NUMBER: (GWB-004-001-009)SUB ASS	SCALE : 1:8 (UOS)
METRIC ALL DIMENSIONS ARE IN mm	NAME	DATE
	ENGINEERED BY: KOSTA KOUMENTAKOS	24-05-2016
	DRAWN BY: KOSTA KOUMENTAKOS	24-05-2016
3RD ANGLE	APPROVED BY: ANASTASIOS ASTERIOU	24-05-2016



Designed By:
KSTENE
INDUSTRIAL DESIGN & ENGINEERING
INNOVATION INGENUITY INSPIRATION

* RESEMBLES CRITICAL DIMENSIONS
RESEMBLES ECR CHANGES



ECR: N/A DATE: 24-02-2016

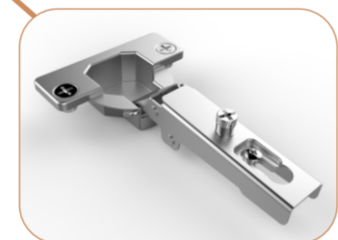
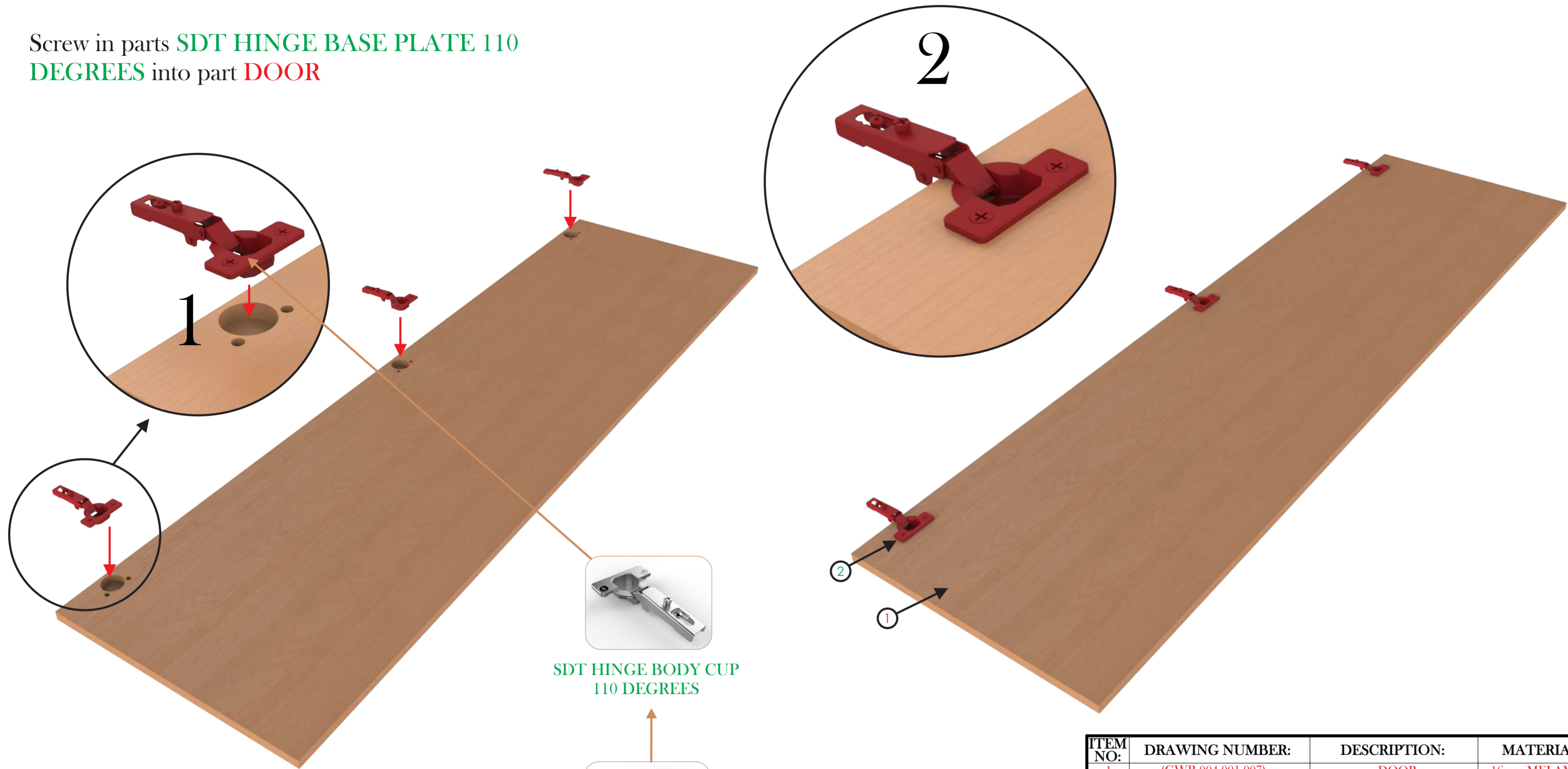
LEVEL: 1

© ALL COPYRIGHTS BELONG TO OIKO, DATE 24-045-2016

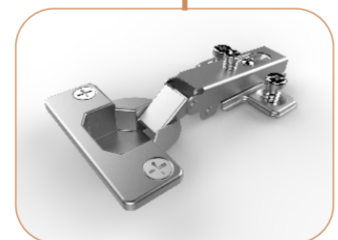
PAGE: 9 OF 15

STEP 14

Screw in parts **SDT HINGE BASE PLATE 110 DEGREES** into part **DOOR**



SDT HINGE BODY CUP
110 DEGREES



SDT HINGE CUP
110 DEGREES

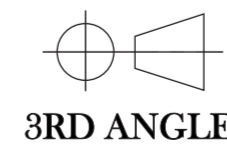
ITEM NO:	DRAWING NUMBER:	DESCRIPTION:	MATERIAL:	QTY:
1	(GWB-004-001-007)	DOOR	16mm MELAMINE	1
2	N/A	SDT HINGE BODY 110 DEGREES	N/A	3

REVISION		
CODE: GWB-004-001	TITLE: DOOR + HINGE BRIDGE SUB ASS	
	PART NUMBER: (GWB-004-001-010) SUB ASS	SCALE : 1:8 (UOS)
METRIC ALL DIMENSIONS ARE IN mm	NAME	
	ENGINEERED BY: KOSTA KOUMENTAKOS	DATE 24-05-2016
	DRAWN BY: KOSTA KOUMENTAKOS	DATE 24-05-2016
3RD ANGLE	APPROVED BY: ANASTASIOS ASTERIOU	
	DATE 24-05-2016	



Designed By:
KSTENE
INDUSTRIAL DESIGN & ENGINEERING
INNOVATION INGENUITY INSPIRATION

* RESEMBLES CRITICAL DIMENSIONS
RESEMBLES ECR CHANGES



ECR: N/A DATE: 24-02-2016

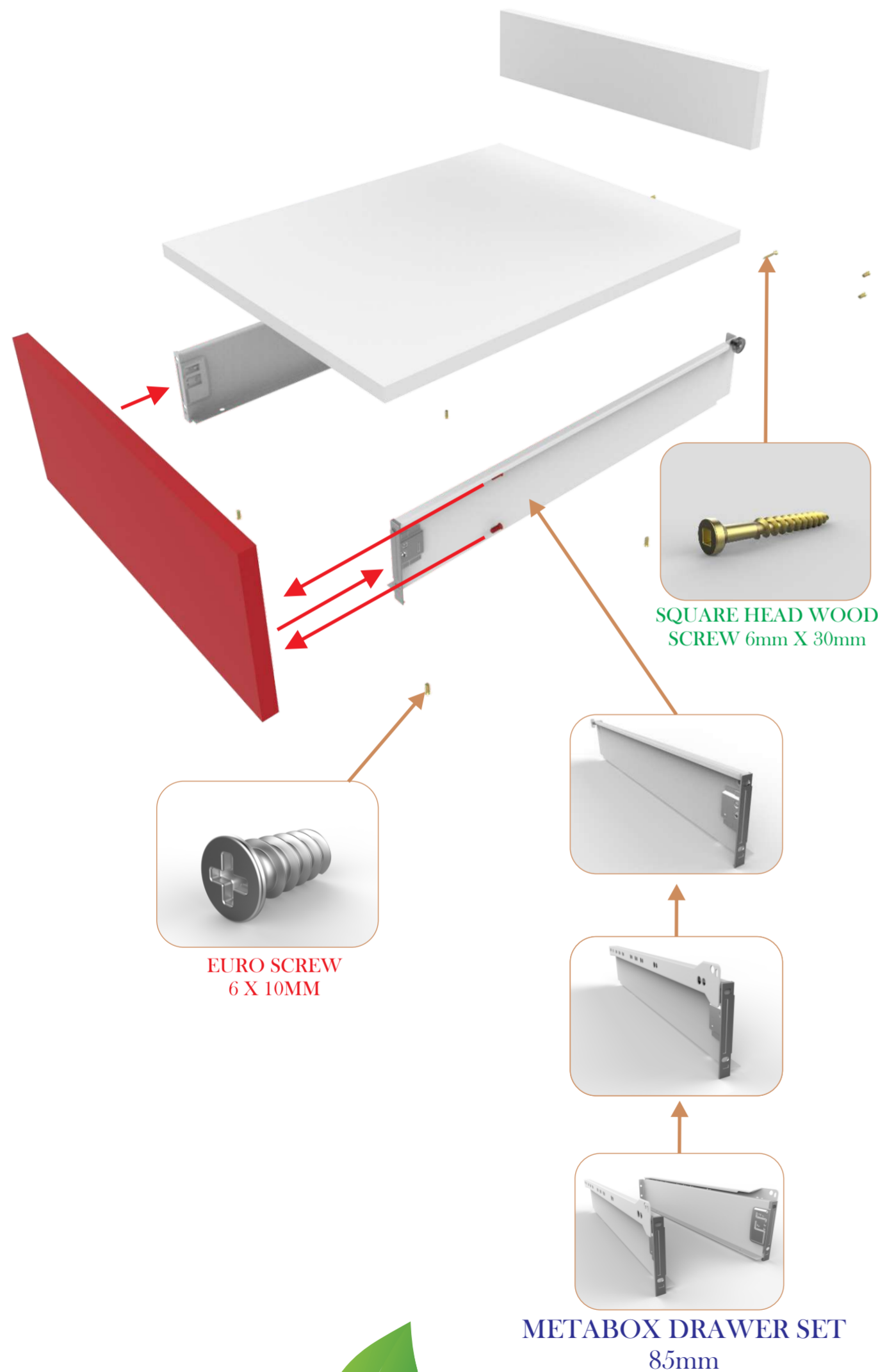
LEVEL: 1

© ALL COPYRIGHTS BELONG TO OIKO, DATE 24-045-2016

PAGE: 10 OF 15

STEP 15

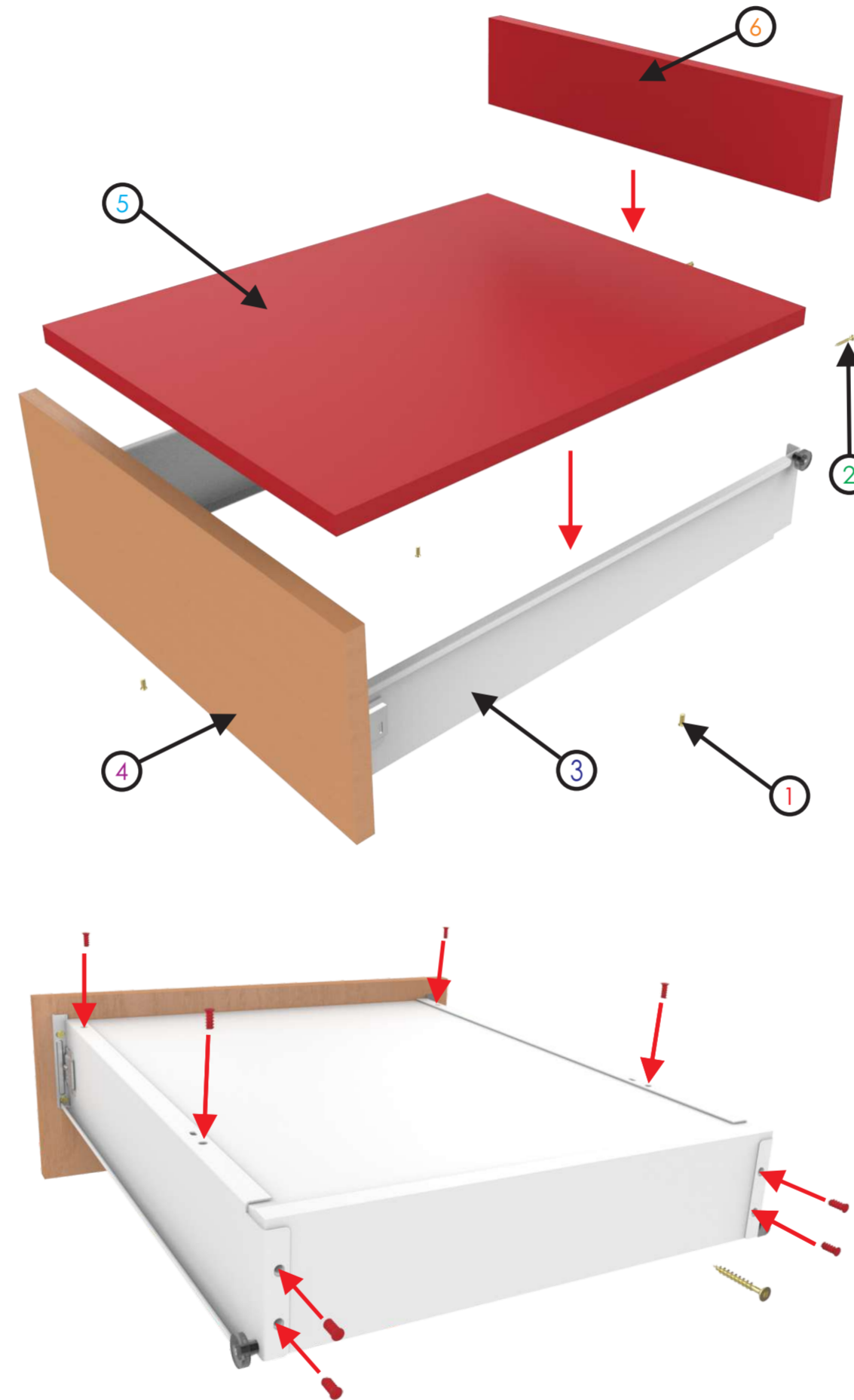
Screw in part **DRAWER FRONT** into parts **METABOX DRAWER SET 85mm** using 4 **EURO SCREW 6 X 10** as shown below:



METABOX DRAWER SET
85mm

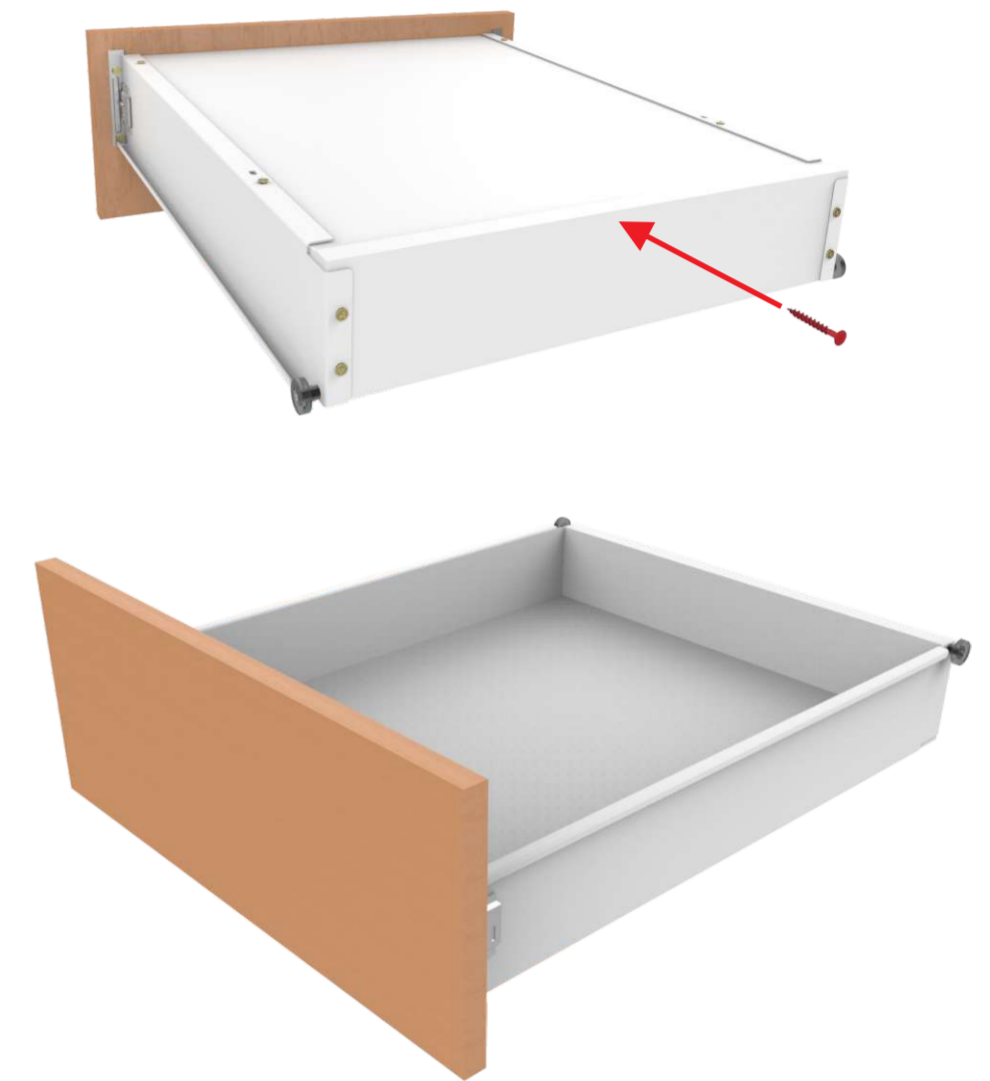
STEP 16

Place parts **DRAWER BASE** and **DRAWER BACK** into the **METABOX DRAWER 5mm**. Use 8 **EURO SCREW 6 X 10** to fasten the panels into place.



STEP 17

Finally screw in the **SQUARE HEAD WOOD SCREW 6 X 30** into the base of panel **DRAWER BACK** going into panel **DRAWER BASE**.



ITEM NO:	DRAWING NUMBER:	DESCRIPTION:	MATERIAL:	QTY:
1	N/A	EURO SCREW 6 X 10	N/A	12
2	N/A	SQUARE HEAD WOOD SCREW 6mm X 30mm	N/A	1
3	N/A	METABOX DRAWER SET 85mm	N/A	1
4	(GWB-004-001-008)	DRAWER FRONT	16mm MELAMINE	1
5	(GWB-004-001-009)	DRAWER BASE	16mm MELAMINE	1
6	(GWB-004-001-010)	DRAWER BACK	16mm MELAMINE	1

REVISION		
CODE: GWB-004-001	TITLE: DRAWER SUB ASS	
	PART NUMBER: (GWB-004-001-011) SUB ASS	SCALE : 1:8 (UOS)
METRIC ALL DIMENSIONS ARE IN mm	NAME	DATE
	ENGINEERED BY: KOSTA KOUMENTAKOS	24-05-2016
	DRAWN BY: KOSTA KOUMENTAKOS	24-05-2016
3RD ANGLE	APPROVED BY: ANASTASIOS ASTERIOU	24-05-2016



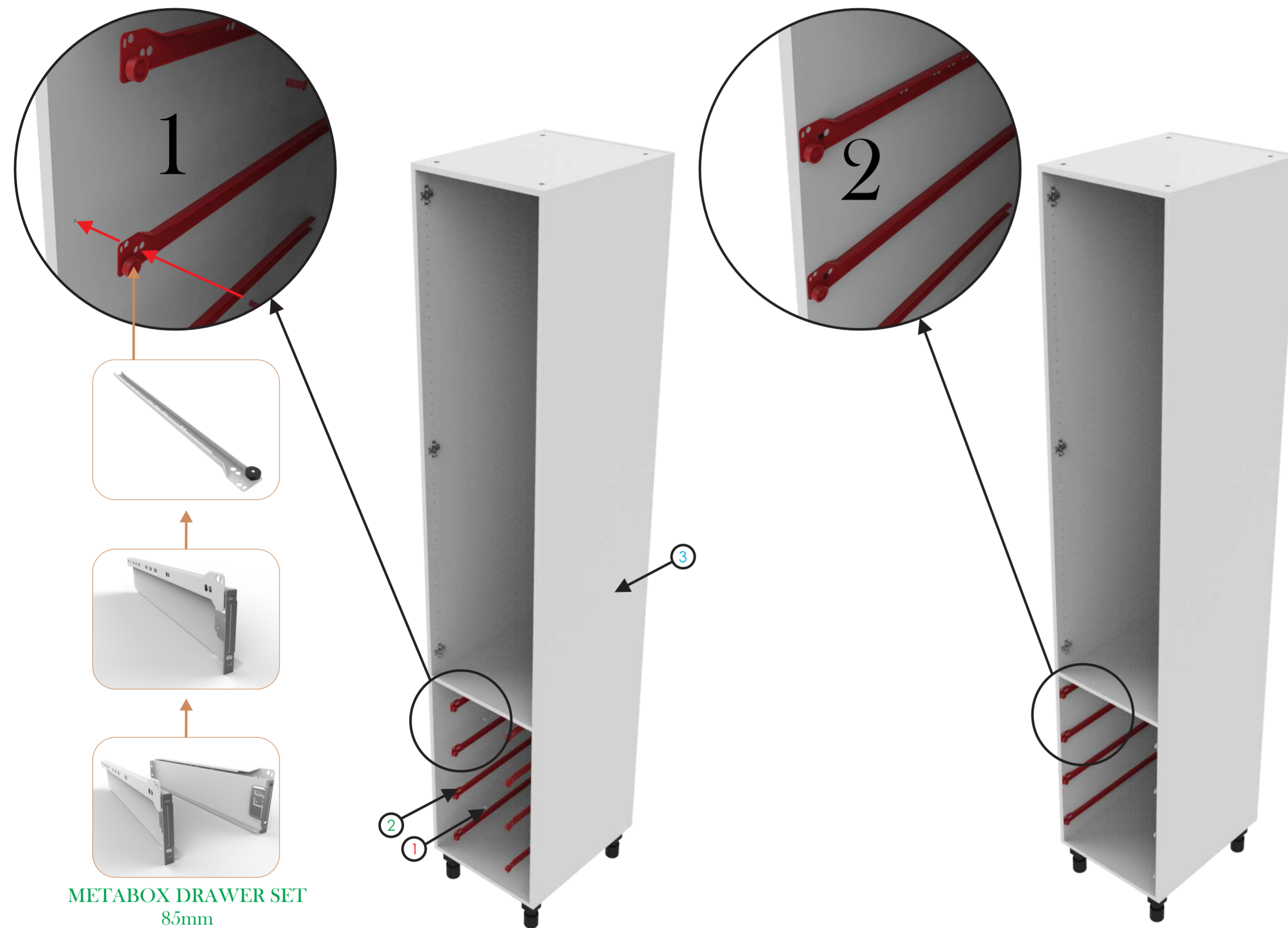
Designed By:
KSTENE
INDUSTRIAL DESIGN & ENGINEERING
INNOVATION INGENUITY INSPIRATION

* RESEMBLES CRITICAL DIMENSIONS
RESEMBLES ECR CHANGES



STEP 18

Screw in the **METABOX DRAWER SET** into assembly **DOOR + HINGE BRIDGE** using the 16 **EURO SCREWS 6 X 10**



METABOX DRAWER SET
8.5mm

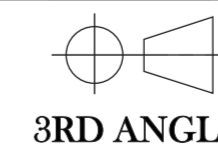
ITEM NO:	DRAWING NUMBER:	DESCRIPTION:	MATERIAL:	QTY:
1	N/A	EURO SCREW 6 X 10	N/A	16
2	N/A	METABOX DRAWER SET 8.5mm	N/A	4
3	(GWB-004-001-010) SUB ASS	DOOR + HINGE BRIDGE SUB ASS	N/A	1

REVISION		
CODE: GWB-004-001	TITLE: HINGE BASE PLATE + METABOX RAILS	
	PART NUMBER: (GWB-004-001-012) SUB ASS	SCALE : 1:8 (UOS)
METRIC ALL DIMENSIONS ARE IN mm	NAME	DATE
	ENGINEERED BY: KOSTA KOUMENTAKOS	24-05-2016
	DRAWN BY: KOSTA KOUMENTAKOS	24-05-2016
3RD ANGLE	APPROVED BY: ANASTASIOS ASTERIOU	24-05-2016



Designed By:
KSTENE
INDUSTRIAL DESIGN & ENGINEERING
INNOVATION INGENUITY INSPIRATION

* RESEMBLES CRITICAL DIMENSIONS
RESEMBLES ECR CHANGES



ECR: N/A DATE: 24-02-2016

LEVEL: 1

© ALL COPYRIGHTS BELONG TO OIKO, DATE 24-04-2016

PAGE: 12 OF 15

STEP 19

Take the **DRAWER** sub assemblies and now fit them into assembly **HINGE BASE PLATE + METABOX RAIL** as seen below:



ITEM NO:	DRAWING NUMBER:	DESCRIPTION:	MATERIAL:	QTY:
1	(GWB-004-001-011) SUB ASS	DRAWER	N/A	4
2	(GWB-004-001-012) SUB ASS	HINGE BASE PLATE + METABOX RAIL	N/A	1

REVISION		
CODE: GWB-004-001	TITLE: DRAWER + BODY	
	PART NUMBER: (GWB-004-001-013) GA ASS	SCALE : 1:8 (UOS)
METRIC ALL DIMENSIONS ARE IN mm	NAME	
	ENGINEERED BY: KOSTA KOUMENTAKOS	DATE 24-05-2016
	DRAWN BY: KOSTA KOUMENTAKOS	DATE 24-05-2016
3RD ANGLE	APPROVED BY: ANASTASIOS ASTERIOU	
	DATE 24-05-2016	



Designed By:
KSTENE
INDUSTRIAL DESIGN & ENGINEERING
INNOVATION INGENUITY INSPIRATION

* RESEMBLES CRITICAL DIMENSIONS
RESEMBLES ECR CHANGES

ECR: N/A DATE: 24-02-2016

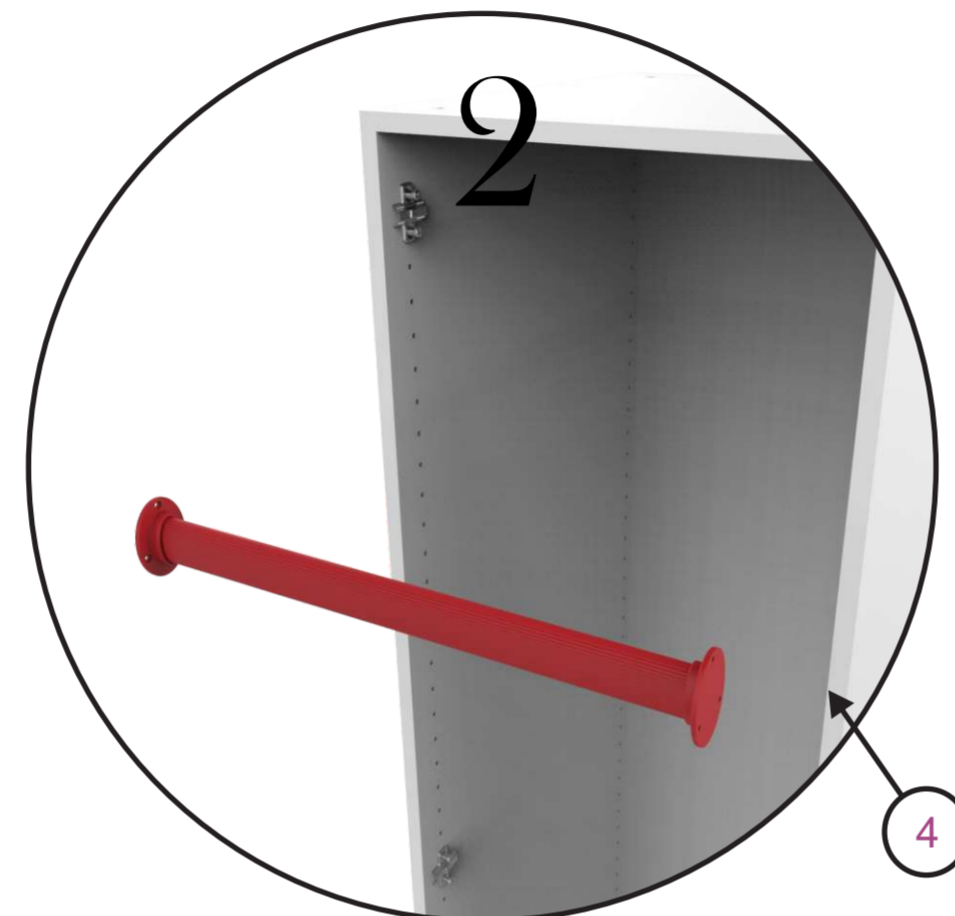
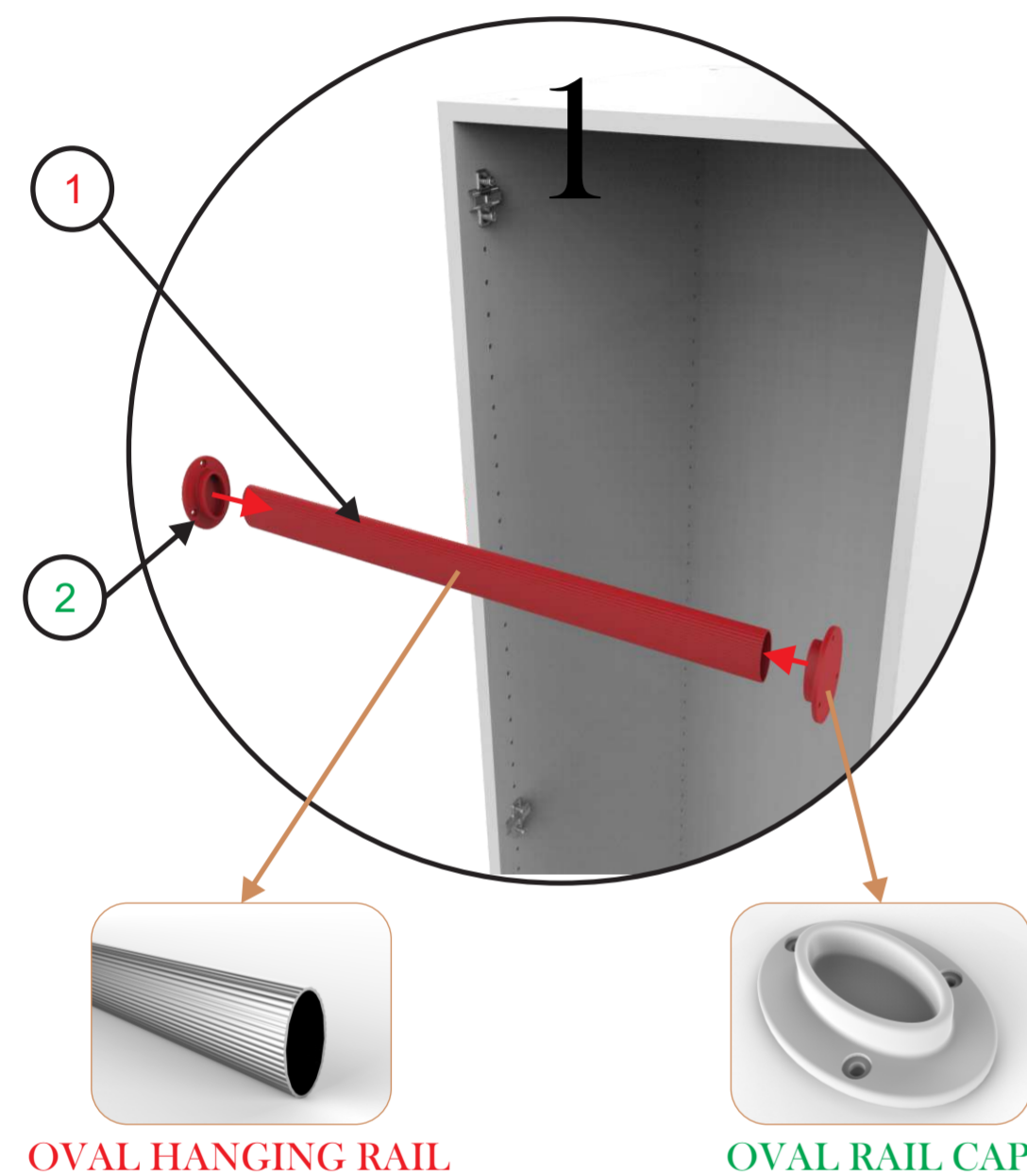
LEVEL: 1

© ALL COPYRIGHTS BELONG TO OIKO, DATE 24-045-2016

PAGE: 13 OF 15

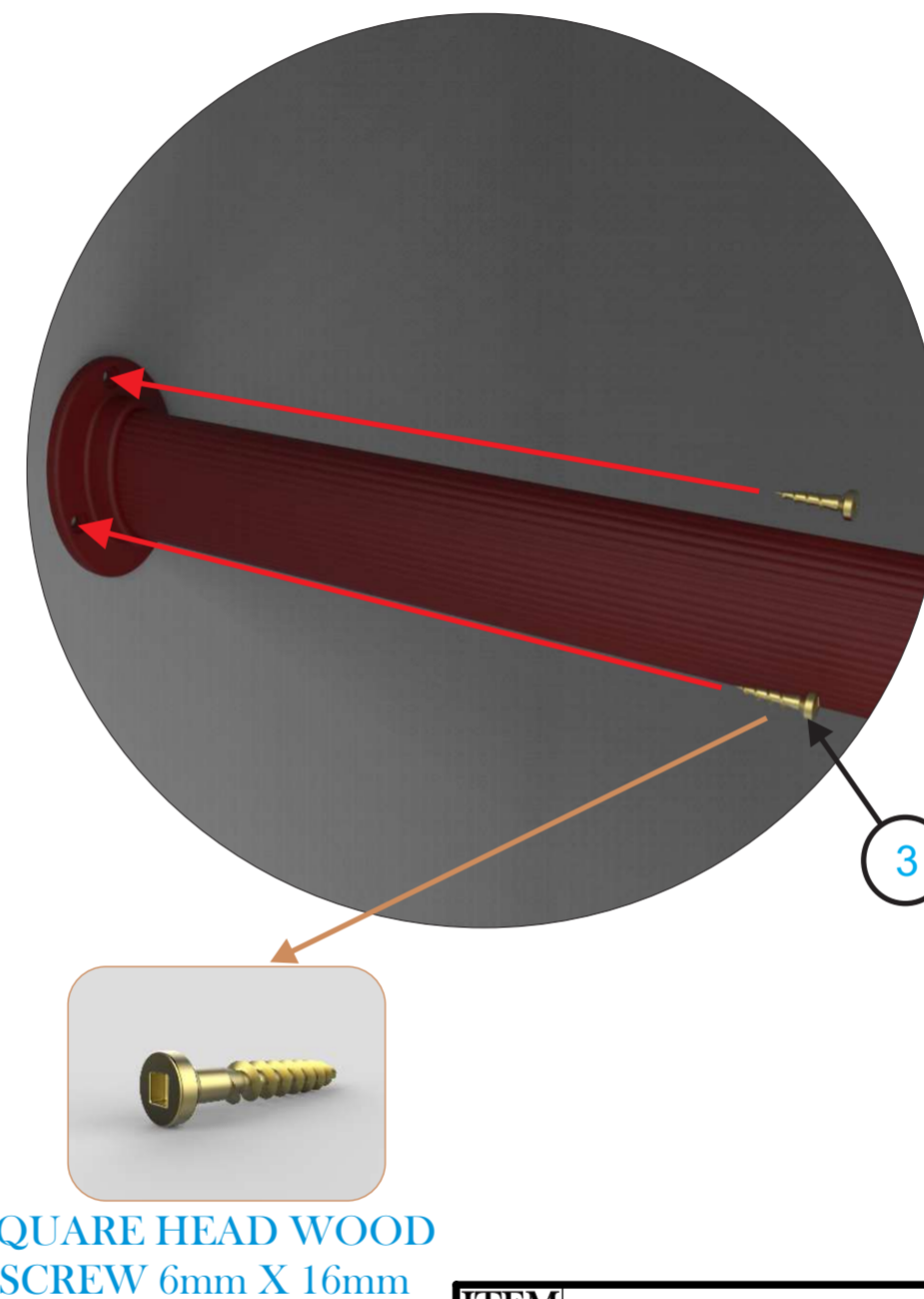
STEP 20

Insert parts **OVAL RAIL CAP** onto either side of part **OVAL HANGING RAIL**



STEP 21

Align the assembled rail to the center of the units side panel. Then measure approximately 150mm from the bottom of the shelf to the top of part **OVAL RAIL CAP** and insert screws as shown below.



ITEM NO:	DRAWING NUMBER:	DESCRIPTION:	MATERIAL:	QTY:
1	N/A	OVAL HANGING RAIL	ALU	1
2	N/A	OVAL RAIL CAP	ABS	2
3	N/A	SQUARE HEAD WOOD SCREW 6mm X 12mm	N/A	6
4	(GWB-004-001-010) SUB ASS	DOOR + HINGE Bridge SUB ASS	N/A	1

REVISION	
CODE: GWB-004-001	TITLE: SHELVES + BODY PART NUMBER: (GWB-004-001-015) SCALE : 1:8 (UOS)
METRIC ALL DIMENSIONS ARE IN mm	NAME ENGINEERED BY: KOSTA KOUMENTAKOS DATE 24-05-2016
	DRAWN BY: KOSTA KOUMENTAKOS DATE 24-05-2016
	APPROVED BY: ANASTASIOS ASTERIOU DATE 24-05-2016



Designed By:
KSTENE
INDUSTRIAL DESIGN & ENGINEERING
INNOVATION INGENUITY INSPIRATION

* RESEMBLES CRITICAL DIMENSIONS
RESEMBLES ECR CHANGES



ECR: N/A DATE: 24-02-2016

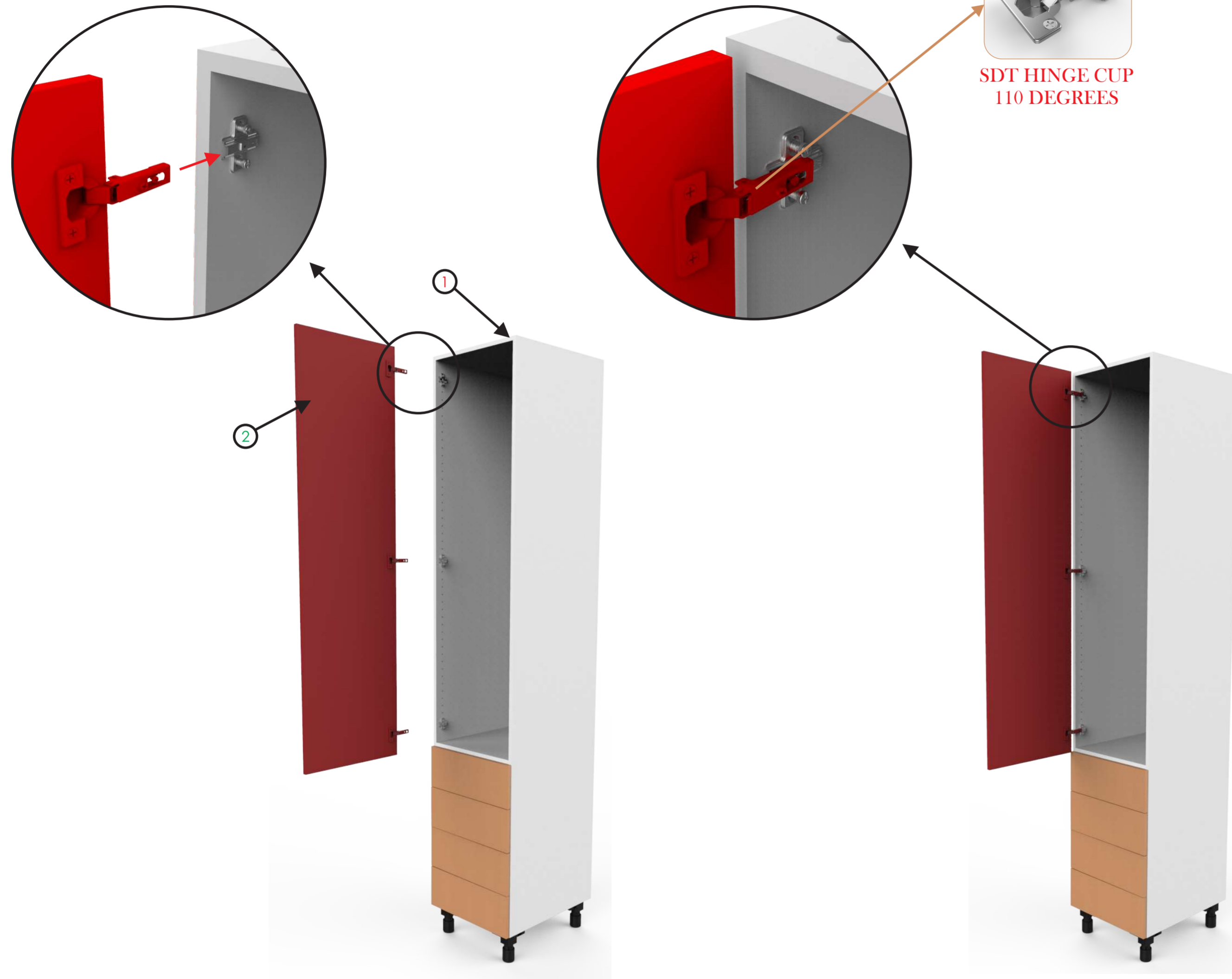
LEVEL: 1

© ALL COPYRIGHTS BELONG TO OIKO, DATE 24-04-2016

PAGE: 14 OF 15

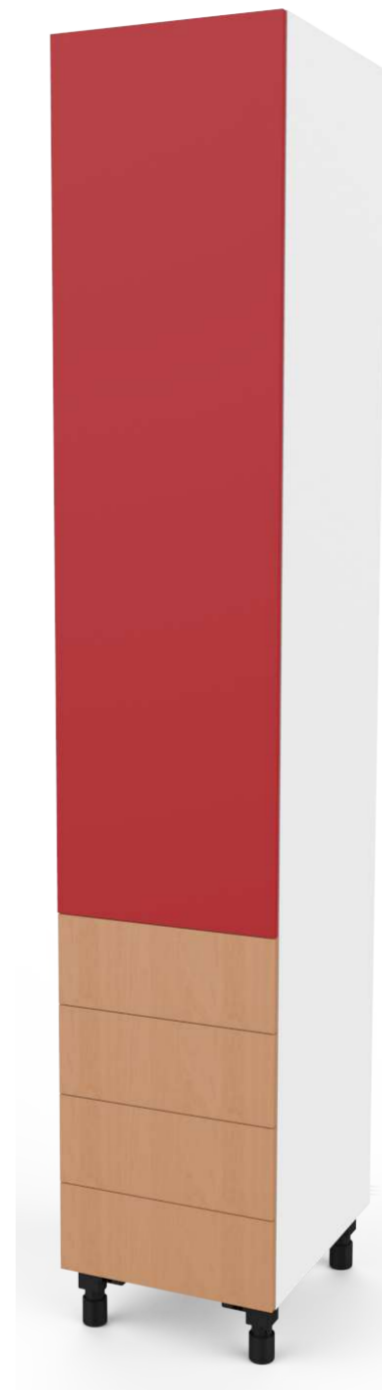
STEP 22

Attach sub assembly **DOOR + HINGE BRIDGE SUB ASS** to sub assembly **HINGE BASE PLATE SUB ASS**. This is done by clipping the 2 halves of the hinge together.



STEP 23

Align the door to the body by adjusting the screws on the hinge.



STEP 24

Your unit is now complete. Finish it off by adding a handles of your choice.



ITEM NO:	DRAWING NUMBER:	DESCRIPTION:	MATERIAL:	QTY:
1	(GWB-004-001-013) SUB ASS	DRAWER + BODY SUB ASS	N/A	1
2	(GWB-004-001-010) SUB ASS	DOOR + HINGE BRIDGE SUB ASS	N/A	1

REVISION		
CODE: GWB-004-001	TITLE: DOOR + BODY	
	PART NUMBER: (GWB-004-001-014)	SCALE : 1:8 (UOS)
METRIC ALL DIMENSIONS ARE IN mm	NAME	
	ENGINEERED BY: KOSTA KOUMENTAKOS	DATE 24-05-2016
	DRAWN BY: KOSTA KOUMENTAKOS	DATE 24-05-2016
3RD ANGLE	APPROVED BY: ANASTASIOS ASTERIOU	DATE 24-05-2016



Designed By:
KSTENE
INDUSTRIAL DESIGN & ENGINEERING
INNOVATION INGENUITY INSPIRATION

* RESEMBLES CRITICAL DIMENSIONS
RESEMBLES ECR CHANGES

ECR: N/A DATE: 24-02-2016

LEVEL: 1

© ALL COPYRIGHTS BELONG TO OIKO, DATE 24-045-2016

PAGE: 15 OF 15