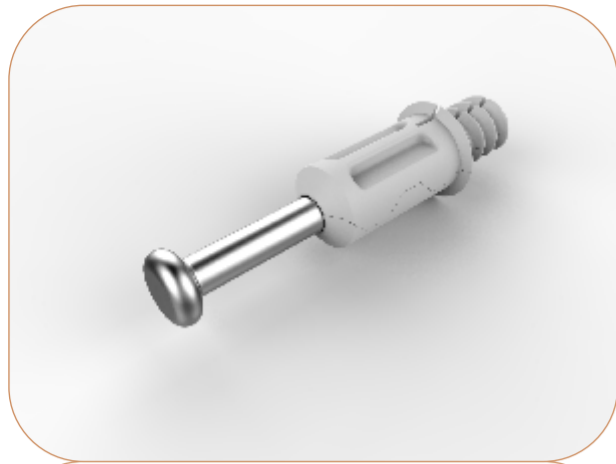


DIY Sink Unit 2 Door



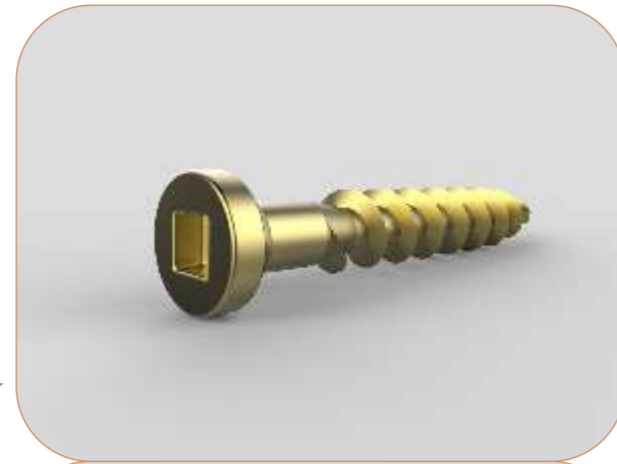
Code: (GWB-020-001)

STANDARD COMPONENTS INDEX



= X10

INDAUX EXPANDA PIN
34mm X 5mm



= X16

SQUARE HEAD WOOD
SCREW 6mm X 16mm



= X10

INDAUX CAM - 15mm



= X2

SQUARE HEAD WOOD
SCREW 6mm X 30mm



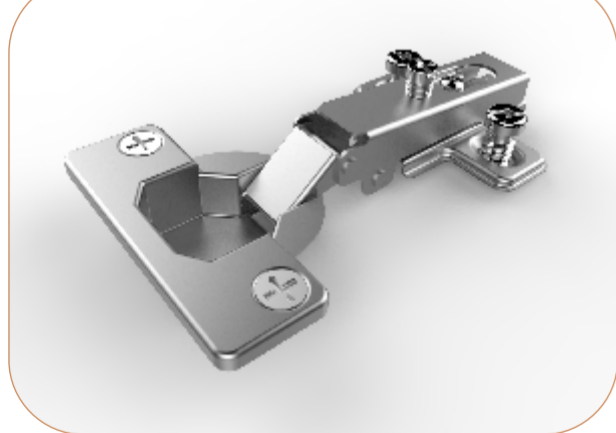
= X20

BIRCH DOWEL
8mm X 30mm



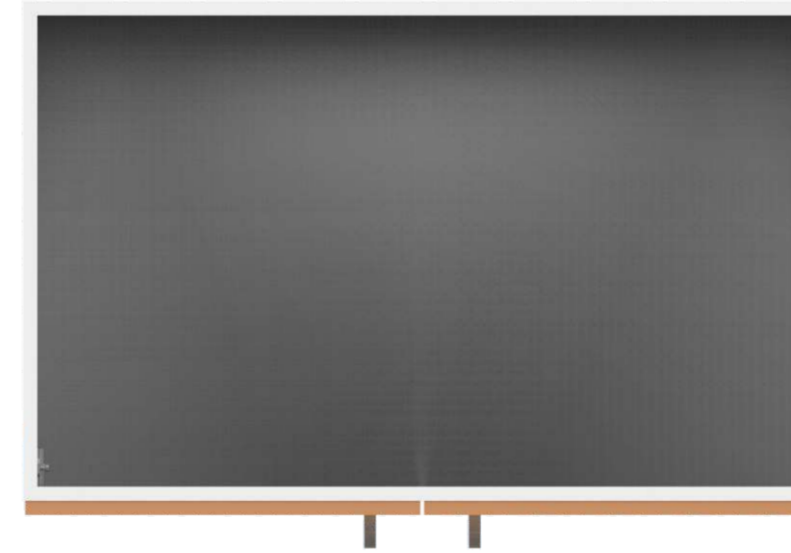
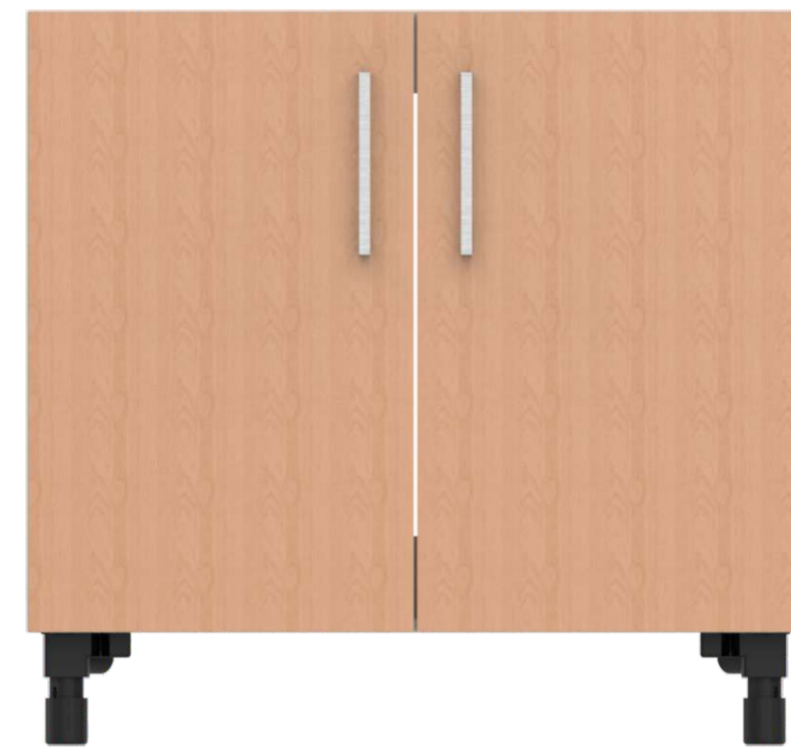
= X4

INDAUX MAMUL - 140mm



= X4

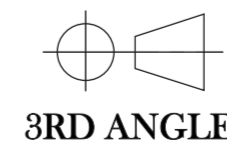
SDT HINGE CUP
110 DEGREES



Designed By:
KSTENE
INDUSTRIAL DESIGN & ENGINEERING
INNOVATION INGENUITY INSPIRATION

* RESEMBLES CRITICAL DIMENSIONS
RESEMBLES ECR CHANGES

METRIC
ALL DIMENSIONS
ARE IN
mm



3RD ANGLE

ECR: N/A DATE: 24-02-2016

LEVEL: 1

© ALL COPYRIGHTS BELONG TO OIKO, DATE 14-09-2016

REVISION

CODE: GWB-020-001	TITLE: STANDARD COMPONENTS INDEX	
	PART NUMBER: (GWB-020-001)	SCALE : 1:8 (UOS)
METRIC ALL DIMENSIONS ARE IN mm	NAME	DATE
	ENGINEERED BY: KOSTA KOUMENTAKOS	14-09-2016
	DRAWN BY: KOSTA KOUMENTAKOS	14-09-2016
	APPROVED BY: ANASTASIOS ASTERIOU	14-09-2016
		PAGE: 1 OF 12

STEP 1

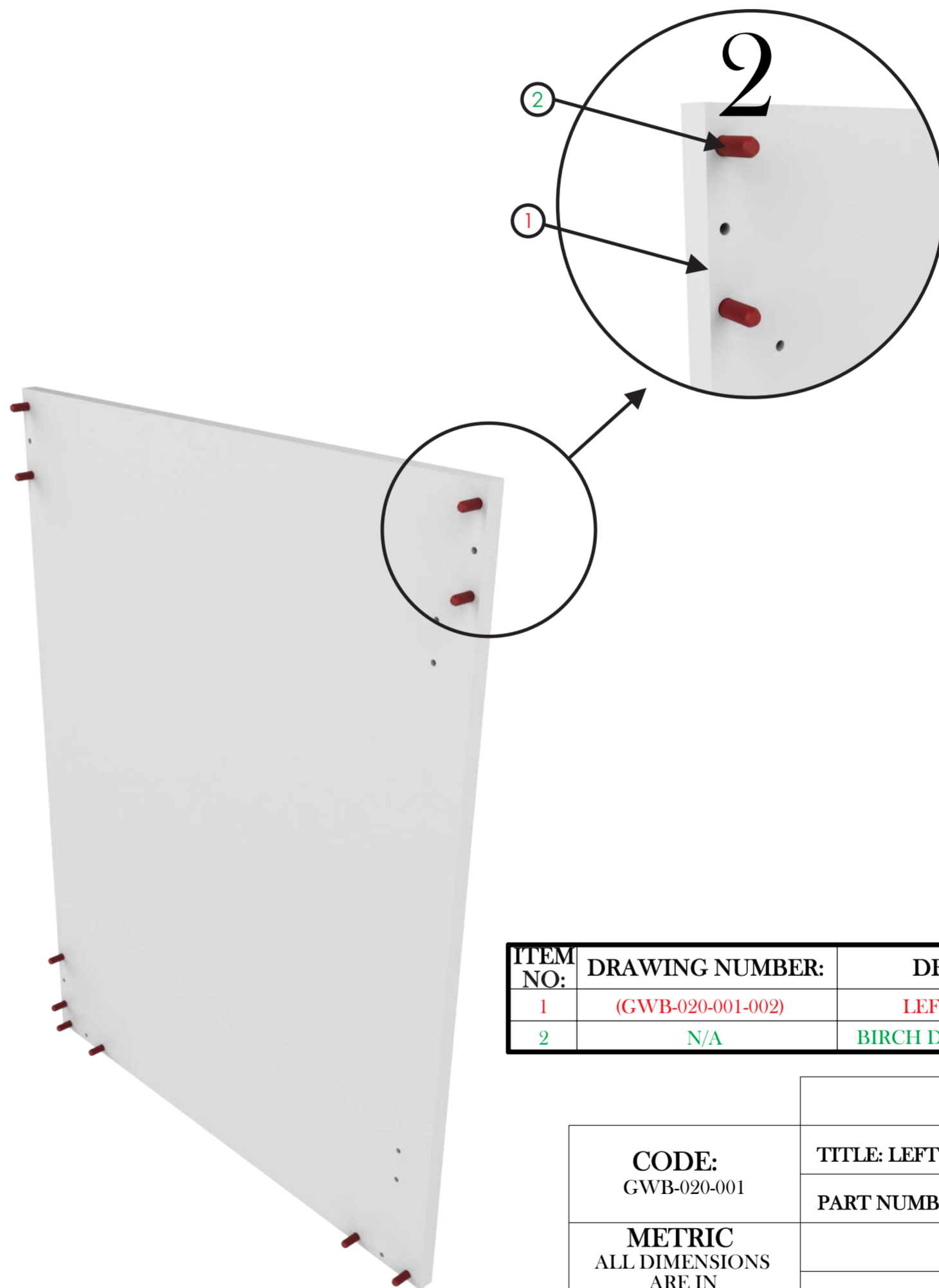
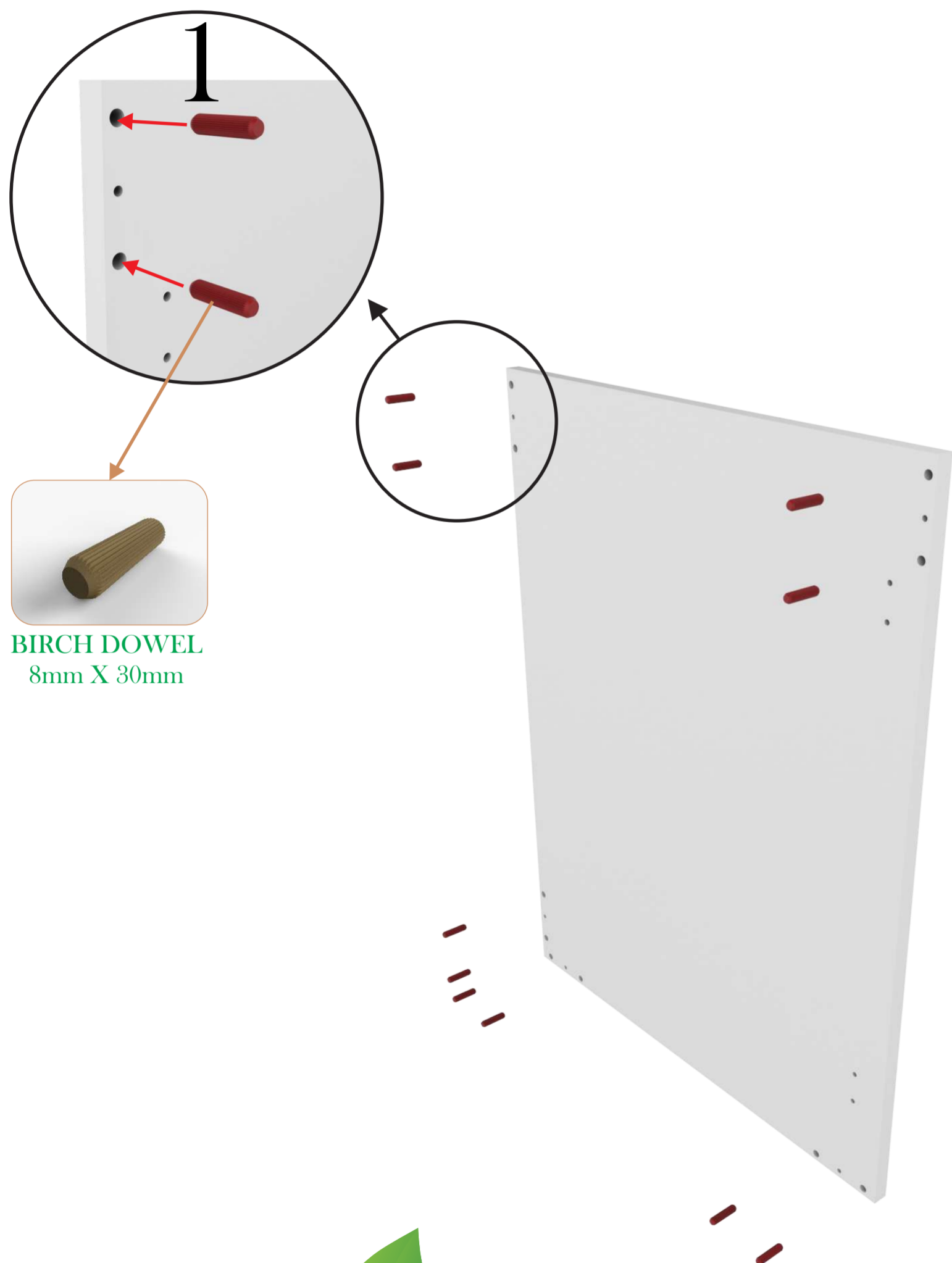
Place part **BIRCH DOWELS** into part **LEFT SIDE PANEL**, use the pre-drilled holes as shown in the pictures below:

NOTE:

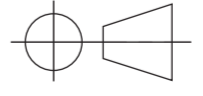
As done in STEP 1, place part **BIRCH DOWELS** into part **LEFT SIDE PANEL**, use the pre-drilled holes as shown in the pictures below:

WARNING:

Do not hit the **BIRCH DOWELS** into place as they could damage the exterior of the **SIDE PANELS**.



ITEM NO:	DRAWING NUMBER:	DESCRIPTION:	MATERIAL:	QTY:
1	(GWB-020-001-002)	LEFT SIDE PANEL	16mm MELAMINE	1
2	N/A	BIRCH DOWEL - 8mm x 30mm	N/A	10

REVISION	
CODE: GWB-020-001	TITLE: LEFT AND RIGHT PANEL + DOWELS SUB ASS
METRIC ALL DIMENSIONS ARE IN mm	PART NUMBER: (GWB-020-001-002) SUB ASS SCALE : 1:8 (UOS)
 3RD ANGLE	NAME
	ENGINEERED BY: KOSTA KOUMENTAKOS
	DATE
	ENGINEERED BY: KOSTA KOUMENTAKOS 14-09-2016
	DRAWN BY: KOSTA KOUMENTAKOS 14-09-2016
	APPROVED BY: ANASTASIOS ASTERIOU 14-09-2016

Designed By:
KSTENE
INDUSTRIAL DESIGN & ENGINEERING
INNOVATION INGENUITY INSPIRATION

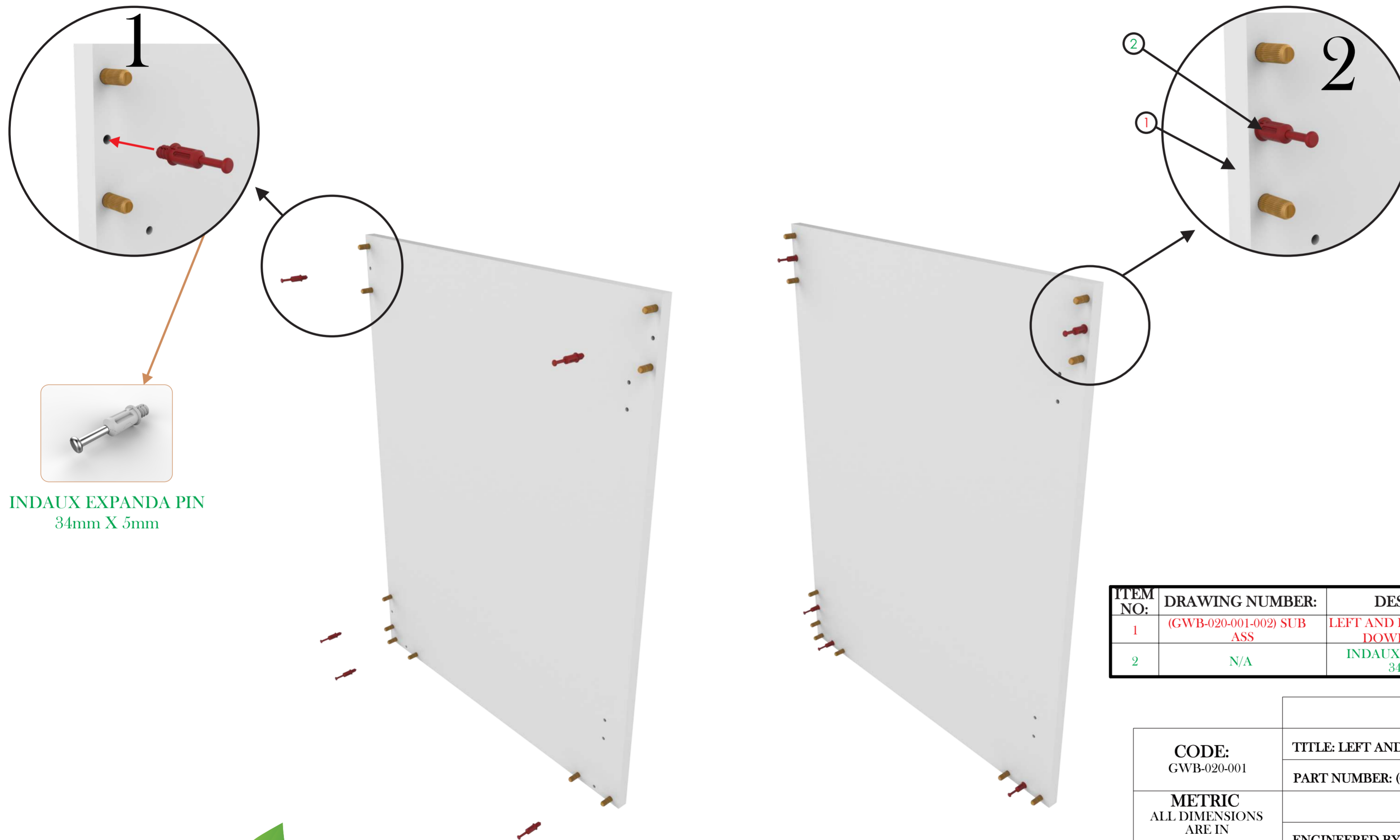
* RESEMBLES CRITICAL DIMENSIONS
RESEMBLES ECR CHANGES

STEP 2

Place part **INDAUX EXPANDA PIN** into part **LEFT AND RIGHT SIDE PANEL + DOWELS SUB ASS**, use the pre-drilled holes as shown in the pictures below:

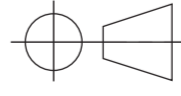
NOTE:

You should have 2 sub assemblies like this.



INDAUX EXPANDA PIN
34mm X 5mm

ITEM NO:	DRAWING NUMBER:	DESCRIPTION:	MATERIAL:	QTY:
1	(GWB-020-001-002) SUB ASS	LEFT AND RIGHT PANEL + DOWELS SUB ASS	N/A	1
2	N/A	INDAUX EXPANDA PIN - 34mm X 5mm	N/A	5

REVISION	
CODE: GWB-020-001	TITLE: LEFT AND RIGHT PANEL + EXPANA PIN SUB ASS
METRIC ALL DIMENSIONS ARE IN mm	PART NUMBER: (GWB-020-001-003) SUB ASS SCALE : 1:8 (UOS)
 3RD ANGLE	NAME
	ENGINEERED BY: KOSTA KOUMENTAKOS
	DATE
	ENGINEERED BY: KOSTA KOUMENTAKOS 14-09-2016
	DRAWN BY: KOSTA KOUMENTAKOS 14-09-2016
	APPROVED BY: ANASTASIOS ASTERIOU 14-09-2016



Designed By:
KSTENE
INDUSTRIAL DESIGN & ENGINEERING
INNOVATION INGENUITY INSPIRATION

* RESEMBLES CRITICAL DIMENSIONS
RESEMBLES ECR CHANGES

ECR: N/A DATE: 24-02-2016

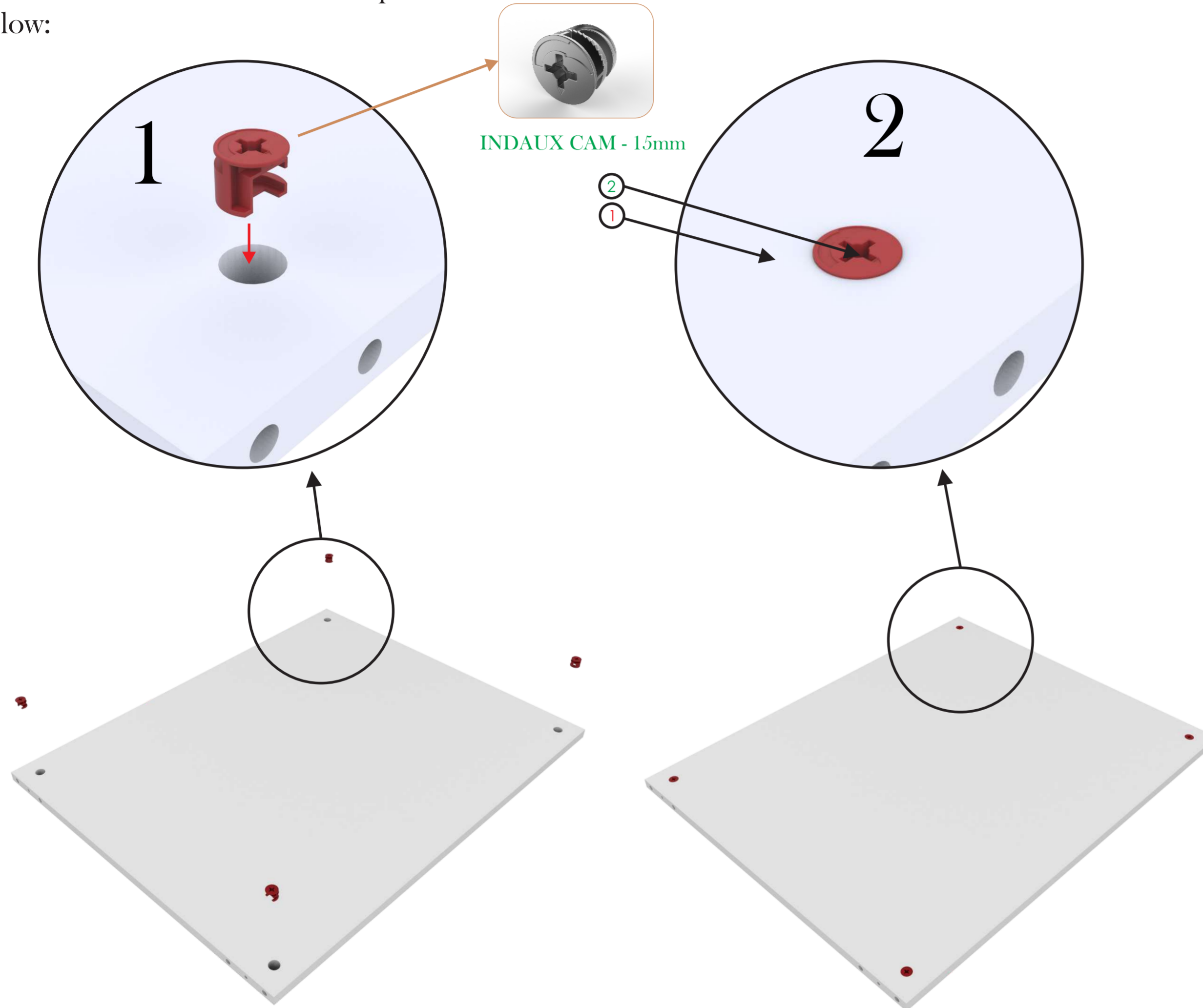
LEVEL: 1

© ALL COPYRIGHTS BELONG TO OIKO, DATE 14-09-2016

PAGE: 3 OF 12

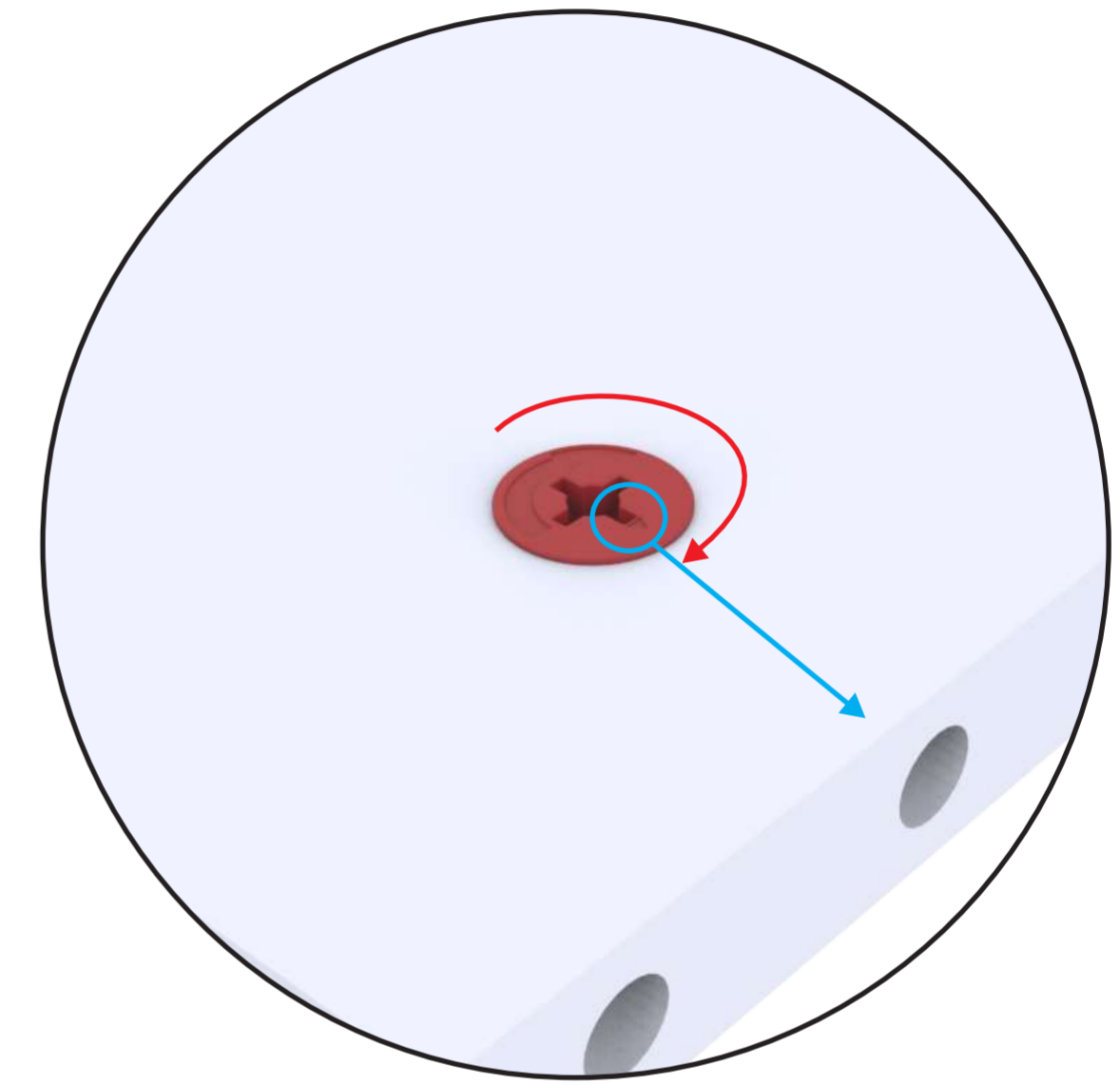
STEP 3

Place part **INDAUX CAM** into part **TOP AND BOTTOM PANEL**, use the pre-drilled holes as shown in the pictures below:



STEP 4

Turn part **INDAUX CAM** so that the arrow faces the edge of the board where the INDAUX EXPANDA PIN hole has been drilled. See below:



ITEM NO:	DRAWING NUMBER:	DESCRIPTION:	MATERIAL:	QTY:
1	(GWB-020-001-004)	TOP & BOTTOM PANEL	16mm MELAMINE	1
2	N/A	INDAUX CAM - 15mm	N/A	4

REVISION	
CODE: GWB-020-001	TITLE: TOP AND BOTTOM PANEL + CAM SUB ASS
METRIC ALL DIMENSIONS ARE IN mm	PART NUMBER: (GWB-020-001-004) SUB ASS
	SCALE : 1:8 (UOS)
	NAME
	DATE
	ENGINEERED BY: KOSTA KOUMENTAKOS
	14-09-2016
	DRAWN BY: KOSTA KOUMENTAKOS
	14-09-2016
	APPROVED BY: ANASTASIOS ASTERIOU
	14-09-2016



Designed By:
KSTENE
INDUSTRIAL DESIGN & ENGINEERING
INNOVATION INGENUITY INSPIRATION

* RESEMBLES CRITICAL DIMENSIONS
RESEMBLES ECR CHANGES



ECR: N/A DATE: 24-02-2016

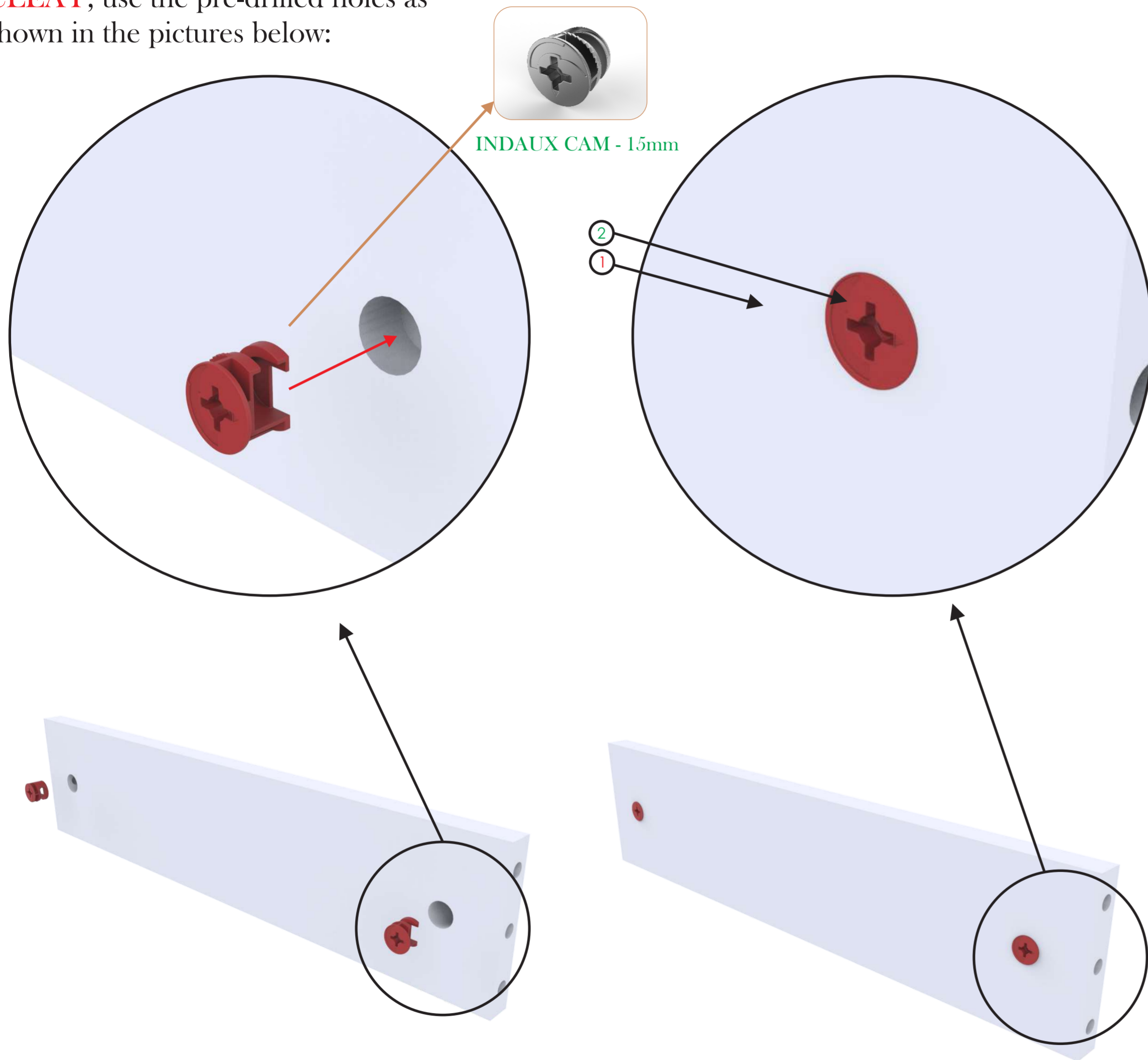
LEVEL: 1

© ALL COPYRIGHTS BELONG TO OIKO, DATE 14-09-2016

PAGE: 4 OF 12

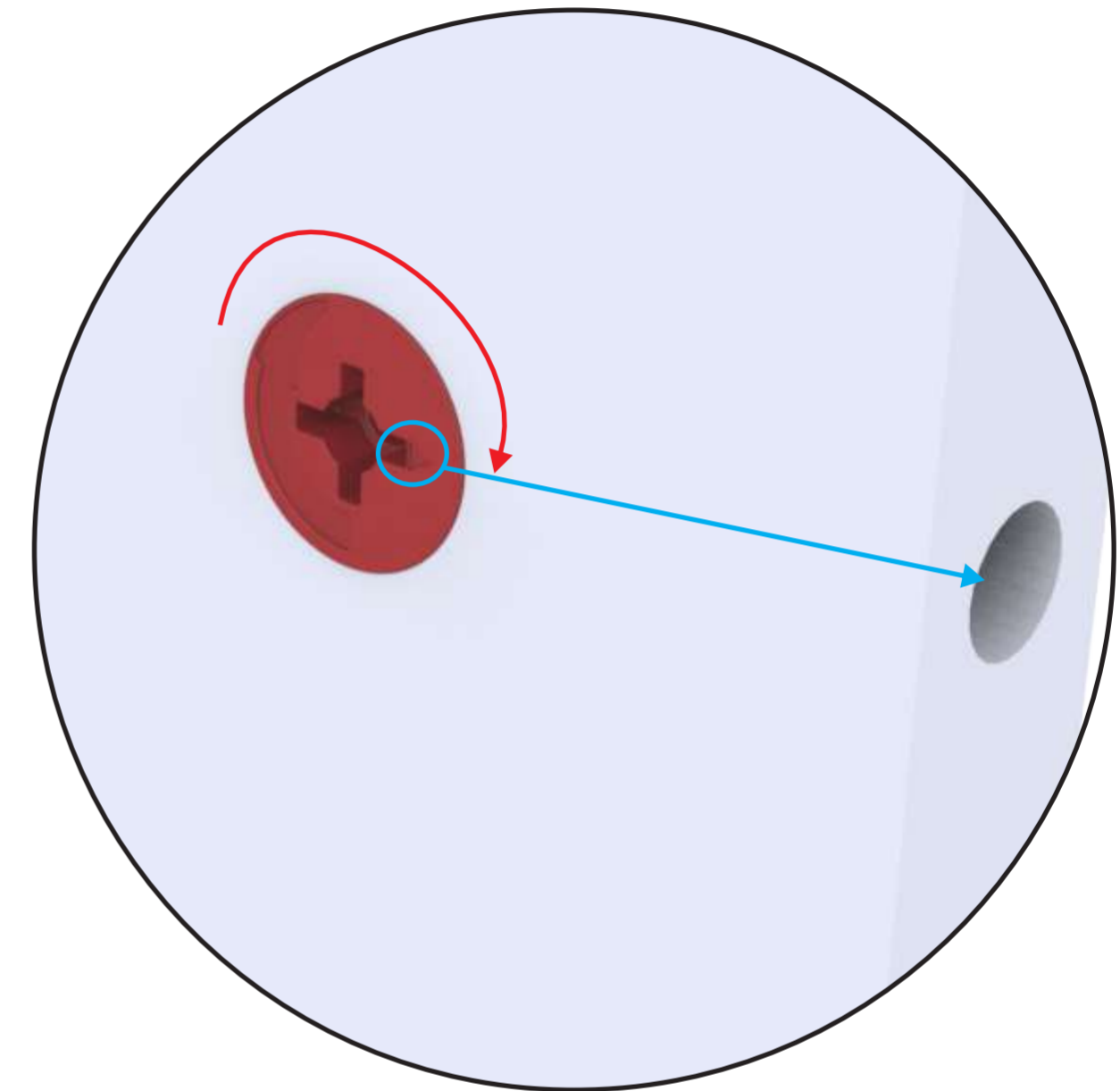
STEP 5

Place part **INDAUX CAM** into part **CLEAT**, use the pre-drilled holes as shown in the pictures below:



STEP 6

Turn part **INDAUX CAM** so that the arrow faces the edge of the board where the INDAUX EXPANDA PIN hole has been drilled. See below:



ITEM NO:	DRAWING NUMBER:	DESCRIPTION:	MATERIAL:	QTY:
1	(GWB-020-001-006)	CLEAT	16mm MELAMINE	1
2	N/A	INDAUX CAM - 15mm	N/A	2

REVISION		
CODE: GWB-020-001	TITLE: CLEAT + CAM SUB ASS	
	PART NUMBER: (GWB-020-001-005) SUB ASS	SCALE : 1:8 (UOS)
METRIC ALL DIMENSIONS ARE IN mm	NAME	DATE
	ENGINEERED BY: KOSTA KOUMENTAKOS	14-09-2016
	DRAWN BY: KOSTA KOUMENTAKOS	14-09-2016
3RD ANGLE	APPROVED BY: ANASTASIOS ASTERIOU	14-09-2016



Designed By:
KSTENE
INDUSTRIAL DESIGN & ENGINEERING
INNOVATION INGENUITY INSPIRATION

* RESEMBLES CRITICAL DIMENSIONS
RESEMBLES ECR CHANGES



ECR: N/A DATE: 24-02-2016

LEVEL: 1

© ALL COPYRIGHTS BELONG TO OIKO, DATE 14-09-2016

PAGE: 5 OF 12

STEP 7

Assemble sub assemblies

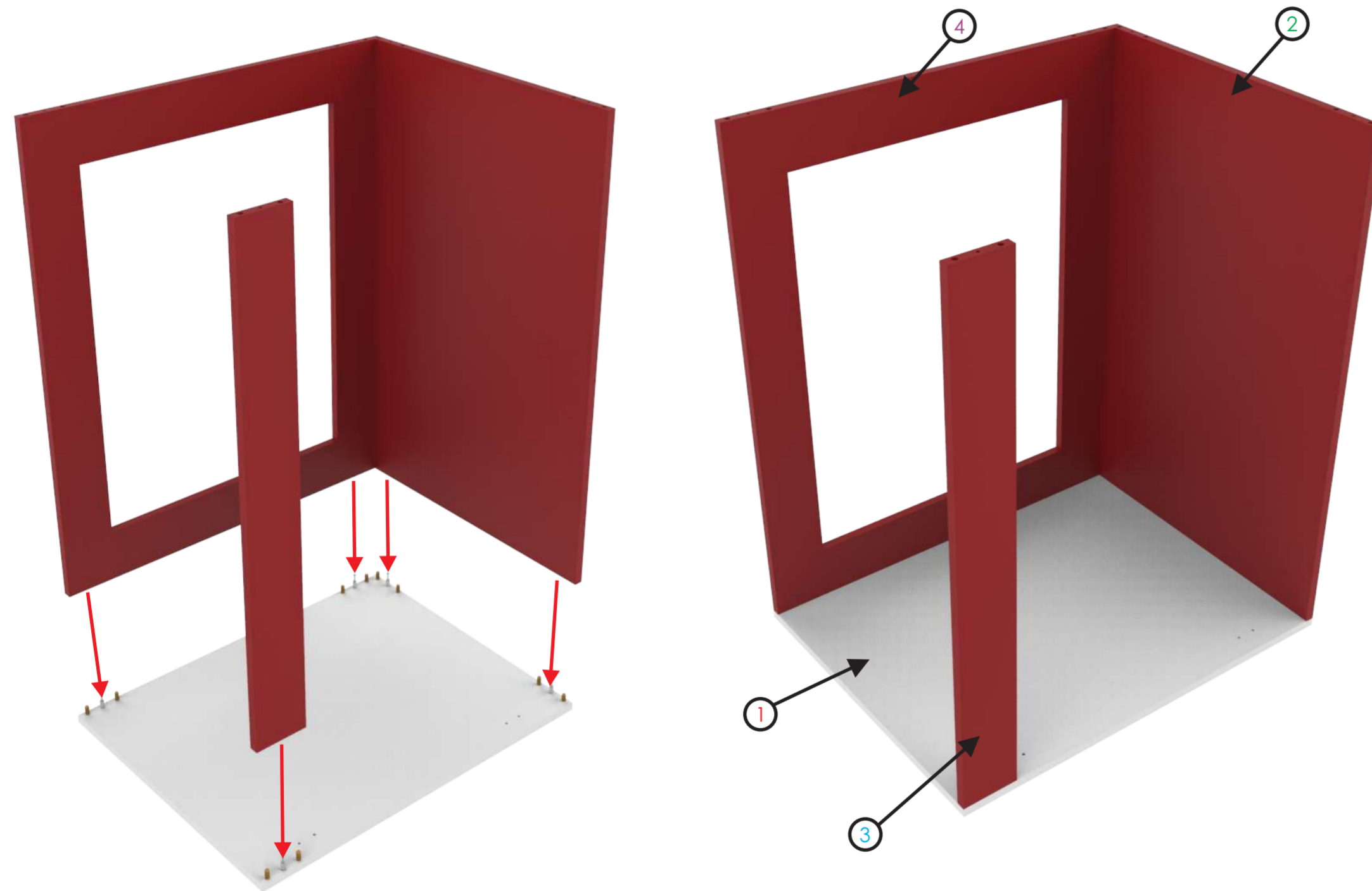
CLEAT + CAM SUB ASS

TOP AND BOTTOM PANEL + CAM SUB ASS

LEFT AND RIGHT PANEL + EXPANDA PIN SUB ASS

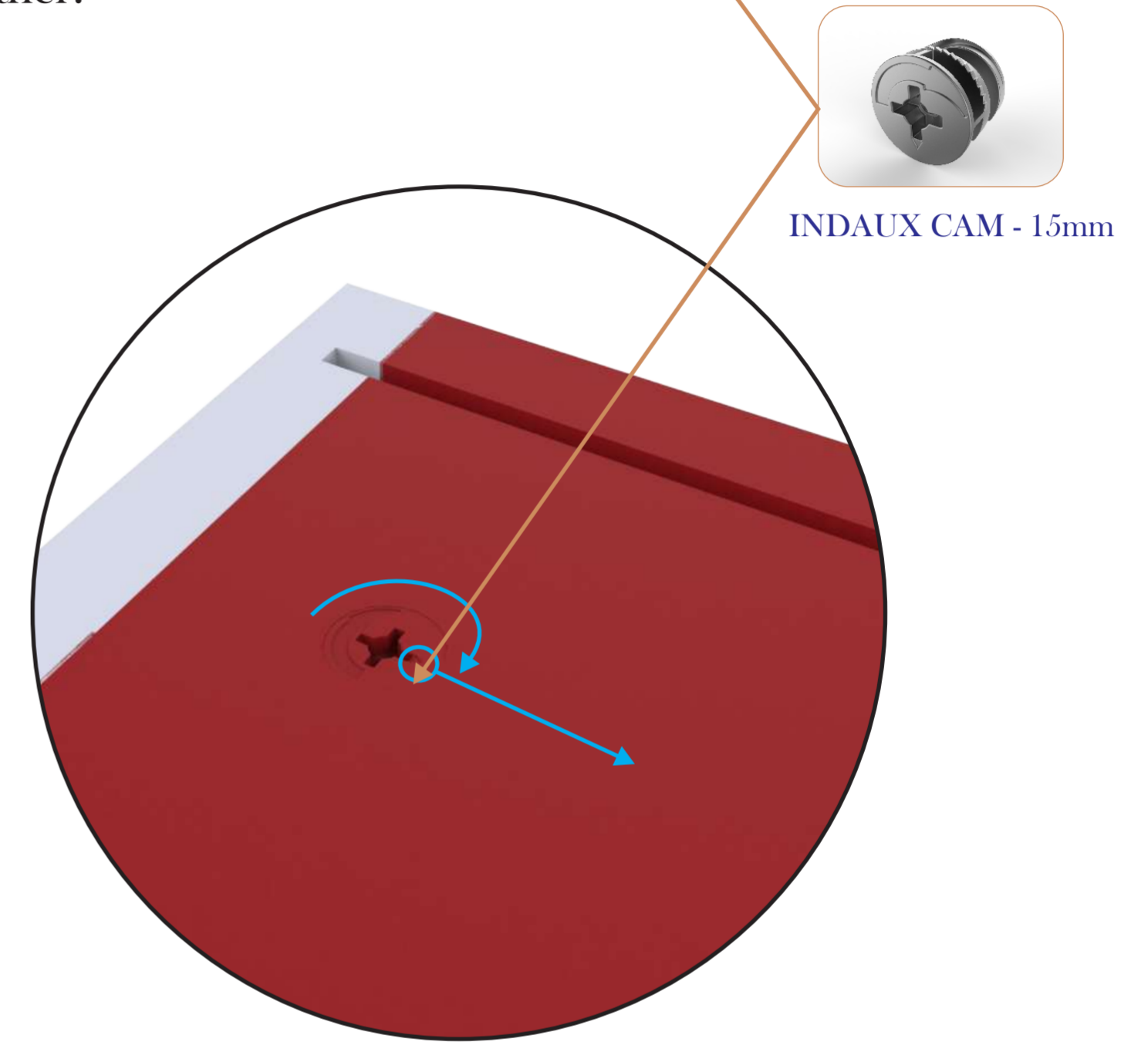
BACK

as shown below:



STEP 8

Now turn the **INDAUX CAM - 15mm 180°** clockwise to fasten all the panels together.



ITEM NO:	DRAWING NUMBER:	DESCRIPTION:	MATERIAL:	QTY:
1	(GWB-020-001-003) SUB ASS	LEFT AND RIGHT PANEL + EXPANDA PIN SUB ASS	N/A	1
2	(GWB-020-001-004) SUB ASS	TOP AND BOTTOM PANEL + CAM SUB ASS	N/A	1
3	(GWB-020-001-005) SUB ASS	CLEAT + CAM SUB ASS	N/A	1
4	(GWB-020-001-006) SUB ASS	BACK	N/A	1

REVISION	
CODE: GWB-020-001	TITLE: SIDES + CLEATS + TOP AND BOTTOM PANEL SUB ASS
	PART NUMBER: (GWB-020-001-006) SUB ASS SCALE : 1:8 (UOS)
METRIC ALL DIMENSIONS ARE IN mm	NAME
	ENGINEERED BY: KOSTA KOUMENTAKOS
	DATE
3RD ANGLE	ENGINEERED BY: KOSTA KOUMENTAKOS
	DATE
	APPROVED BY: ANASTASIOS ASTERIOU
	DATE



Designed By:
KSTENE
INDUSTRIAL DESIGN & ENGINEERING
INNOVATION INGENUITY INSPIRATION

* RESEMBLES CRITICAL DIMENSIONS
RESEMBLES ECR CHANGES

ECR: N/A DATE: 24-02-2016

LEVEL: 1

© ALL COPYRIGHTS BELONG TO OIKO, DATE 14-09-2016

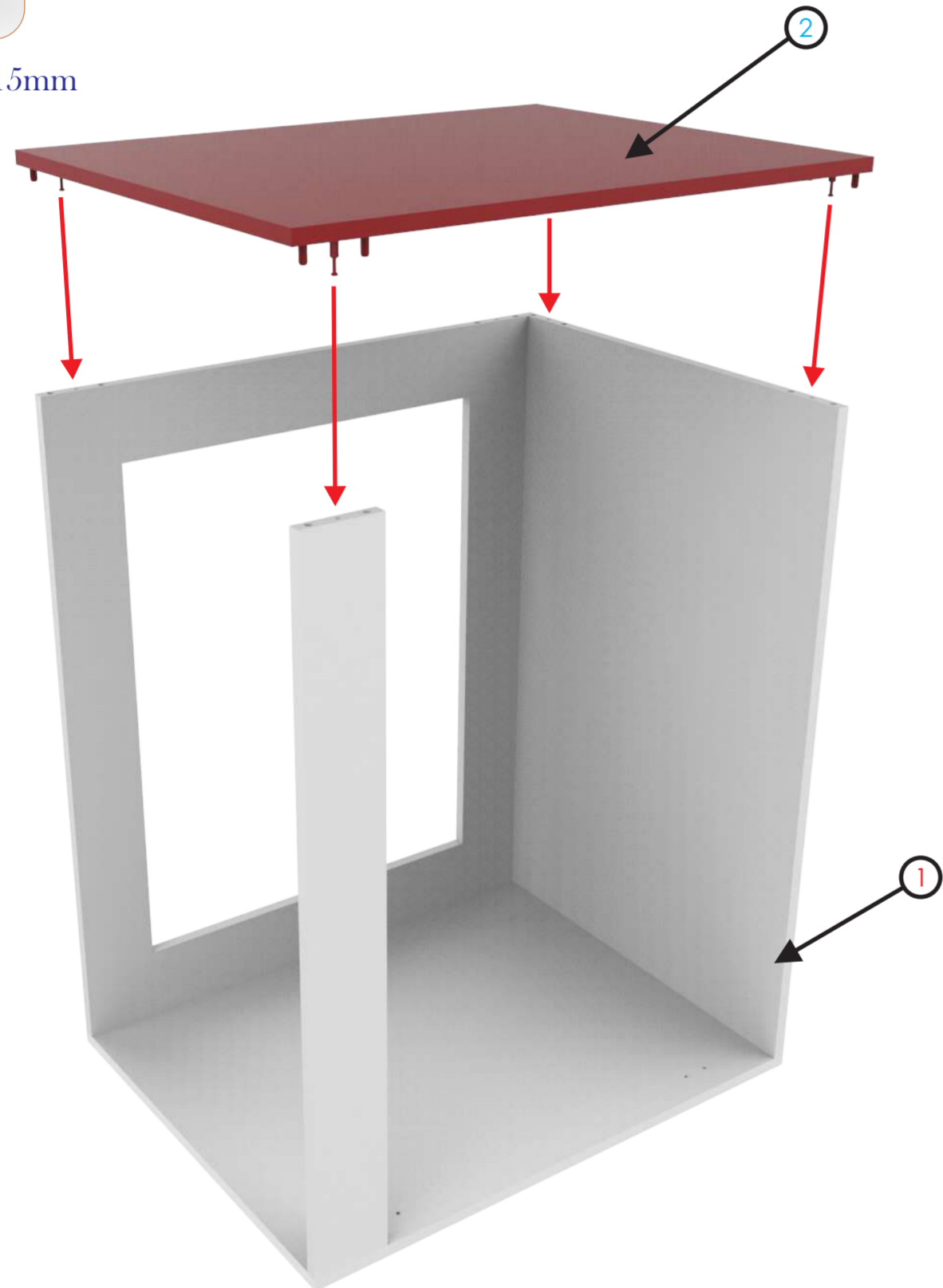
PAGE: 6 OF 12

STEP 9

Place assembly **LEFT AND RIGHT PANEL + DOWELS SUB ASS** into assembly **SIDES + CLEATS + TOP AND BOTTOM PANEL SUB ASS** but do not fasten the **INDAUX CAM**. See below:



INDAUX CAM - 15mm

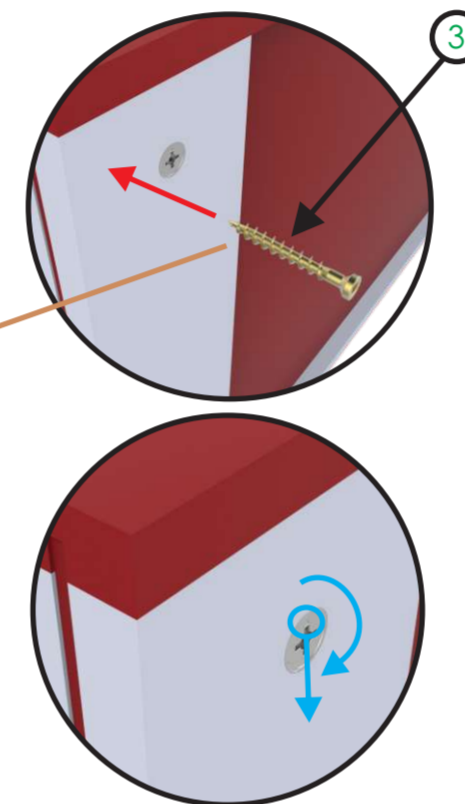


STEP 10

Fasten the **INDAUX CAMS** to secure assembly **LEFT AND RIGHT PANEL + DOWELS SUB ASS**. Finally screw in the **SQUARE HEAD WOOD SCREW** as seen in the pictures below:



SQUARE HEAD WOOD SCREW 6mm X 30mm



ITEM NO:	DRAWING NUMBER:	DESCRIPTION:	MATERIAL:	QTY:
1	(GWB-020-001-002) SUB ASS	PANEL + DOWELS SUB ASS SIDES + CLEATS +	N/A	1
2	(GWB-020-001-006) SUB ASS	TOP AND BOTTOM PANEL SUB ASS	N/A	1
3	N/A	SQUARE HEAD WOOD SCREW 6mm X 30mm	N/A	2



Designed By:
KSTENE
INDUSTRIAL DESIGN & ENGINEERING
INNOVATION INGENUITY INSPIRATION

* RESEMBLES CRITICAL DIMENSIONS
RESEMBLES ECR CHANGES



3RD ANGLE

REVISION	
CODE: GWB-020-001	TITLE: BACKING BOARD + RIGHT PANEL SUB ASS
METRIC ALL DIMENSIONS ARE IN mm	PART NUMBER: (GWB-020-001-007) SUB ASS SCALE : 1:8 (UOS)
	NAME DATE
	ENGINEERED BY: KOSTA KOUMENTAKOS 14-09-2016
	DRAWN BY: KOSTA KOUMENTAKOS 14-09-2016
	APPROVED BY: ANASTASIOS ASTERIOU 14-09-2016

ECR: N/A DATE: 24-02-2016

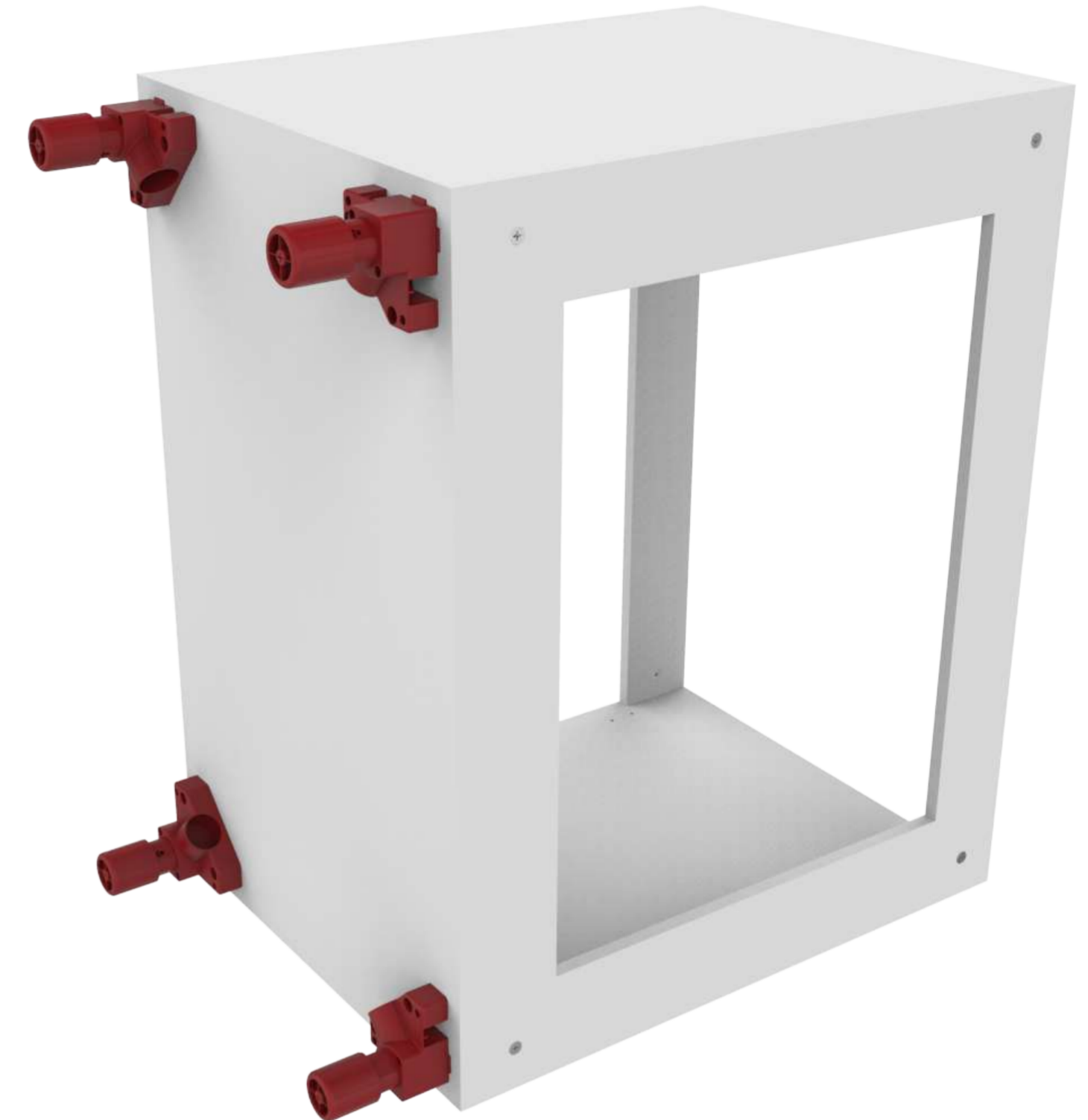
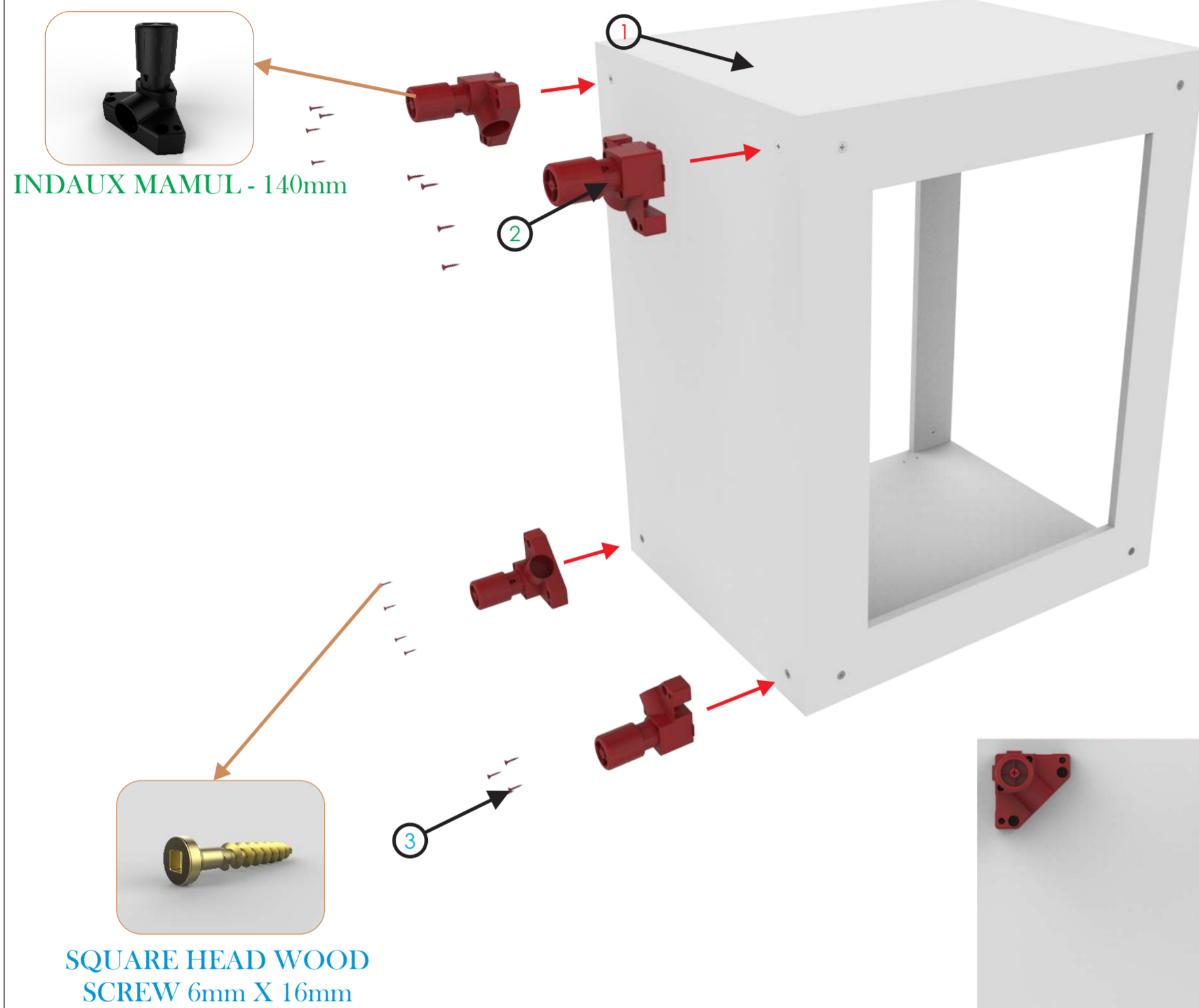
LEVEL: 1

© ALL COPYRIGHTS BELONG TO OIKO, DATE 14-09-2016

PAGE: 7 OF 12

STEP 11

Screw the **INDAUX MAMUL** feet into the unit using parts **SQUARE HEAD WOOD SCREW** as shown below:

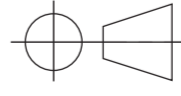


WARNING

Assemble the **INDAUX MAMUL** feet in the positioning/spacing as shown in the picture on the right:



ITEM NO:	DRAWING NUMBER:	DESCRIPTION:	MATERIAL:	QTY:
1	(GWB-020-001-007) SUB ASS	BACKING BOARD + RIGHT PANEL SUB ASS	N/A	1
2	N/A	INDAUX MAMUL - 140mm	N/A	4
3	N/A	SQUARE HEAD WOOD SCREW 6mm X 12mm	N/A	16

REVISION	
CODE: GWB-020-001	TITLE: FEET SUB ASS
METRIC ALL DIMENSIONS ARE IN mm	PART NUMBER: (GWB-020-001-008) SUB ASS
 3RD ANGLE	SCALE : 1:8 (UOS)
	NAME
	DATE
	ENGINEERED BY: KOSTA KOUMENTAKOS
	DATE
	14-09-2016
	DRAWN BY: KOSTA KOUMENTAKOS
	14-09-2016
	APPROVED BY: ANASTASIOS ASTERIOU
	14-09-2016



Designed By:
KSTENE
INDUSTRIAL DESIGN & ENGINEERING
INNOVATION INGENUITY INSPIRATION

* RESEMBLES CRITICAL DIMENSIONS
RESEMBLES ECR CHANGES

ECR: N/A DATE: 24-02-2016

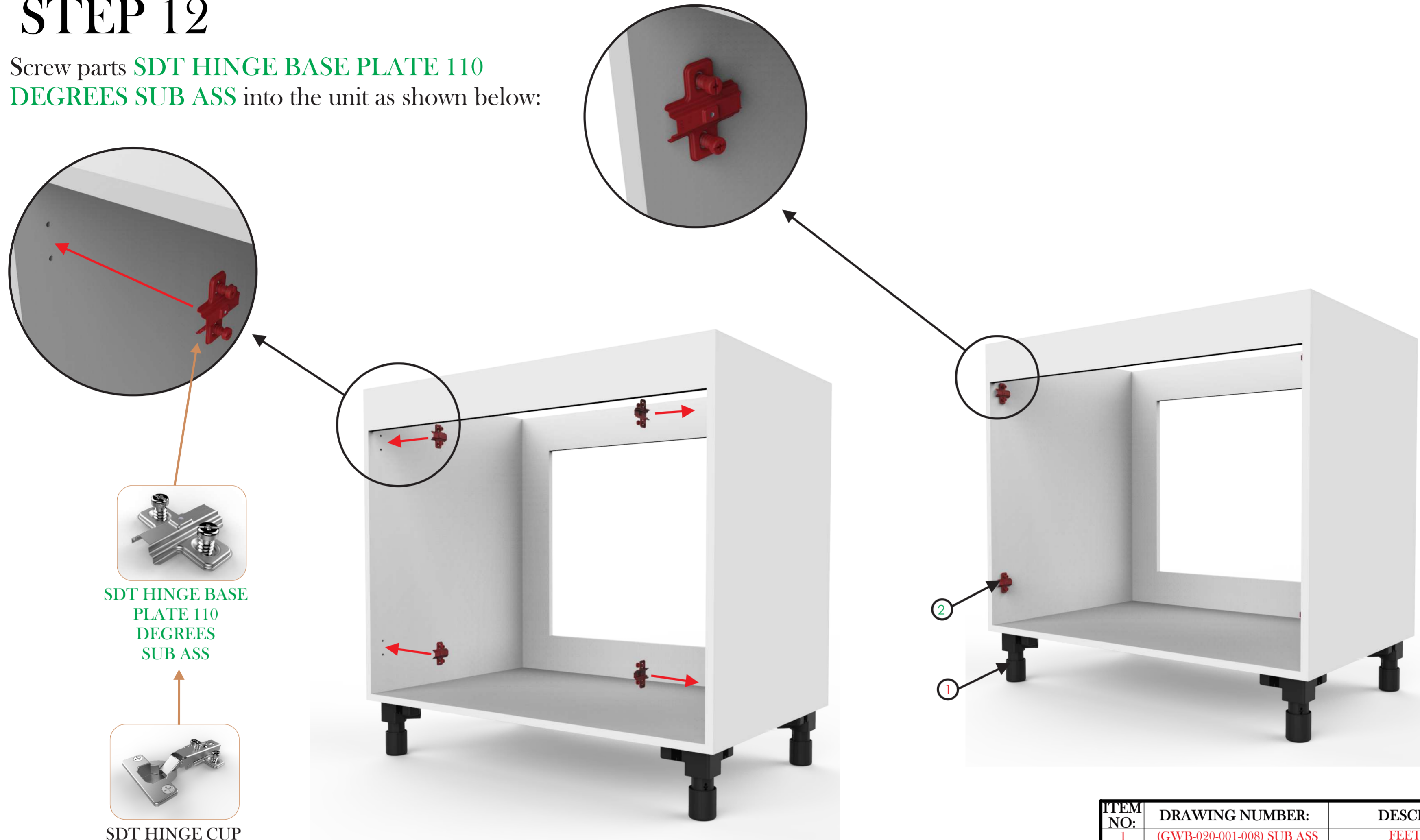
LEVEL: 1

© ALL COPYRIGHTS BELONG TO OIKO, DATE 14-09-2016

PAGE: 8 OF 12

STEP 12

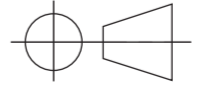
Screw parts **SDT HINGE BASE PLATE 110 DEGREES SUB ASS** into the unit as shown below:



SDT HINGE BASE PLATE 110 DEGREES SUB ASS

SDT HINGE CUP 110 DEGREES

ITEM NO:	DRAWING NUMBER:	DESCRIPTION:	MATERIAL:	QTY:
1	(GWB-020-001-008) SUB ASS	FEET SUB ASS	N/A	1
2	N/A	SDT HINGE BASE PLATE 110 DEGREES SUB ASS	N/A	4

REVISION	
CODE: GWB-020-001	TITLE: HINGE BASE PLATE SUB ASS
METRIC ALL DIMENSIONS ARE IN mm	PART NUMBER: (GWB-020-001-009)SUB ASS SCALE : 1:8 (UOS)
 3RD ANGLE	NAME
	ENGINEERED BY: KOSTA KOUMENTAKOS
	DATE
	ENGINEERED BY: KOSTA KOUMENTAKOS 14-09-2016
	DRAWN BY: KOSTA KOUMENTAKOS 14-09-2016
	APPROVED BY: ANASTASIOS ASTERIOU 14-09-2016



Designed By:
KSTENE
INDUSTRIAL DESIGN & ENGINEERING
INNOVATION INGENUITY INSPIRATION

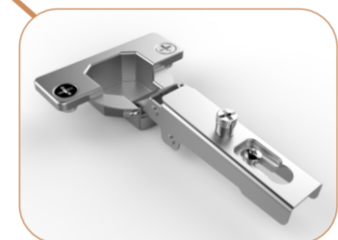
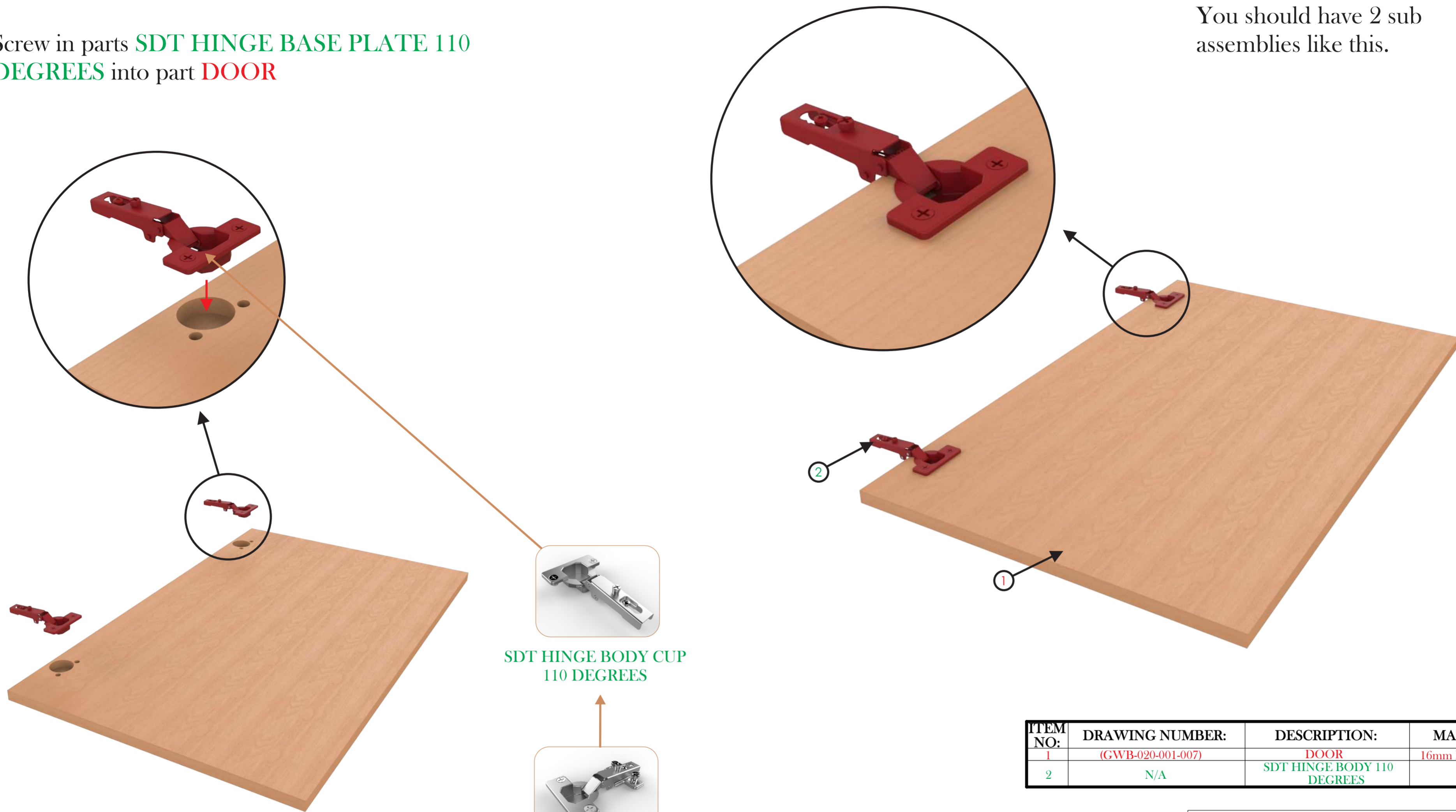
* RESEMBLES CRITICAL DIMENSIONS
RESEMBLES ECR CHANGES

STEP 13

Screw in parts **SDT HINGE BASE PLATE 110 DEGREES** into part **DOOR**

NOTE:

You should have 2 sub assemblies like this.



SDT HINGE BODY CUP
110 DEGREES



SDT HINGE CUP
110 DEGREES

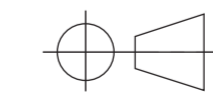
ITEM NO:	DRAWING NUMBER:	DESCRIPTION:	MATERIAL:	QTY:
1	(GWB-020-001-007)	DOOR	16mm MELAMINE	1
2	N/A	SDT HINGE BODY 110 DEGREES	N/A	2

REVISION		
CODE: GWB-020-001	TITLE: DOOR + HINGE BRIDGE SUB ASS	
	PART NUMBER: (GWB-020-001-010) SUB ASS	SCALE : 1:8 (UOS)
METRIC ALL DIMENSIONS ARE IN mm	NAME	DATE
	ENGINEERED BY: KOSTA KOUMENTAKOS	14-09-2016
	DRAWN BY: KOSTA KOUMENTAKOS	14-09-2016
3RD ANGLE	APPROVED BY: ANASTASIOS ASTERIOU	14-09-2016



Designed By:
KSTENE
INDUSTRIAL DESIGN & ENGINEERING
INNOVATION INGENUITY INSPIRATION

* RESEMBLES CRITICAL DIMENSIONS
RESEMBLES ECR CHANGES



3RD ANGLE

ECR: N/A DATE: 24-02-2016

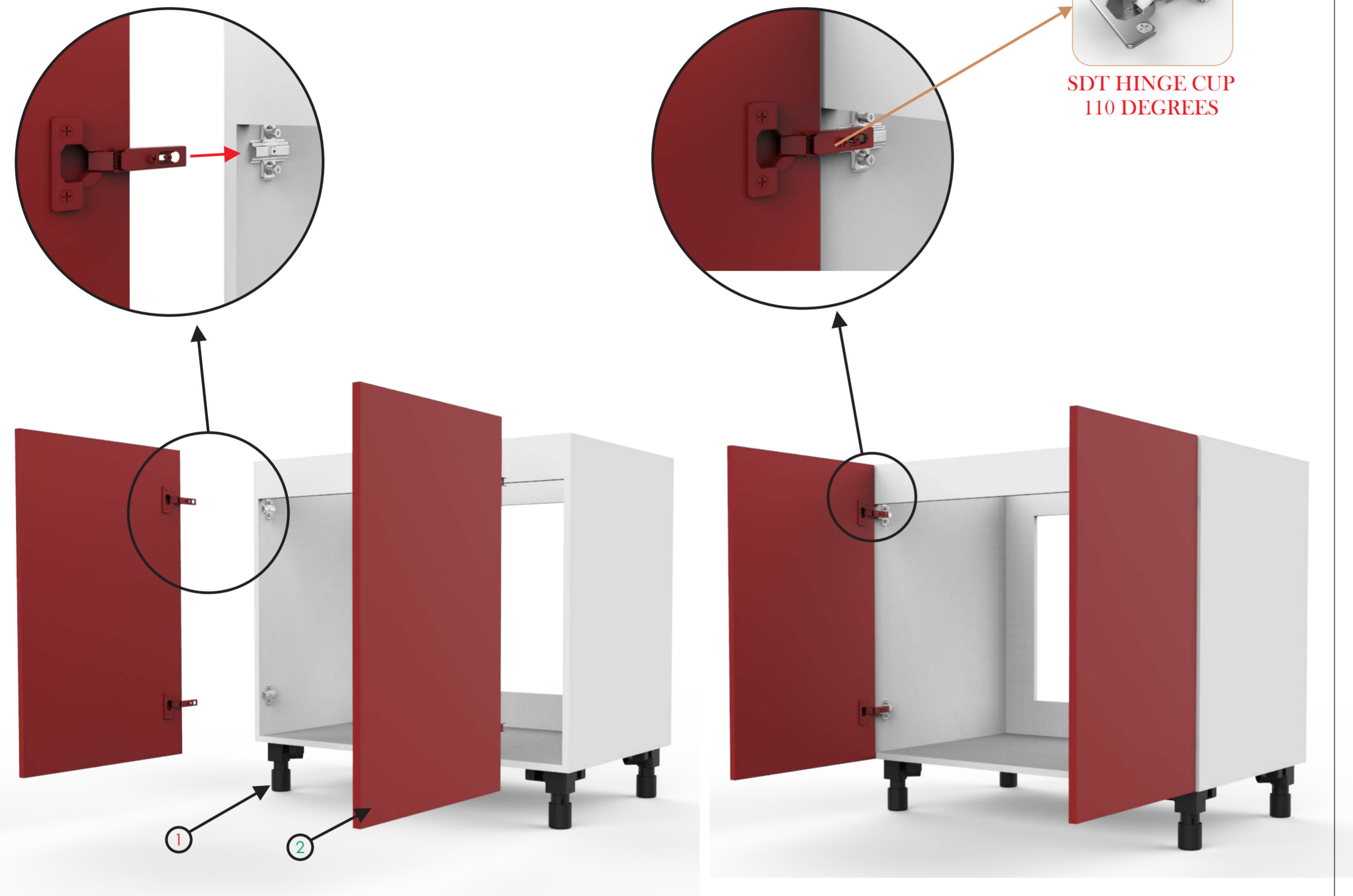
LEVEL: 1

© ALL COPYRIGHTS BELONG TO OIKO, DATE 14-09-2016

PAGE: 10 OF 12

STEP 14

Attach sub assembly **DOOR + HINGE BRIDGE SUB ASS** to sub assembly **HINGE BASE PLATE SUB ASS**. This is done by clipping the 2 halves of the hinge together.



STEP 15

Align the door to the body by adjusting the screws on the hinge.



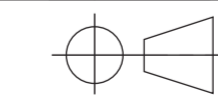
ITEM NO:	DRAWING NUMBER:	DESCRIPTION:	MATERIAL:	QTY:
1	(GWB-020-001-009) SUB ASS	HINGE BASE PLATE SUB ASS	N/A	1
2	(GWB-020-001-010) SUB ASS	DOOR + HINGE BRIDGE SUB ASS	N/A	2

REVISION		
CODE: GWB-020-001	TITLE: DOOR + BODY SUB ASS	
	PART NUMBER: (GWB-020-001-011) SUB ASS	SCALE : 1:8 (UOS)
METRIC ALL DIMENSIONS ARE IN mm	NAME	
	ENGINEERED BY: KOSTA KOUMENTAKOS	DATE 14-09-2016
	DRAWN BY: KOSTA KOUMENTAKOS	DATE 14-09-2016
3RD ANGLE	APPROVED BY: ANASTASIOS ASTERIOU	
	DATE 14-09-2016	



Designed By:
KSTENE
INDUSTRIAL DESIGN & ENGINEERING
INNOVATION INGENUITY INSPIRATION

* RESEMBLES CRITICAL DIMENSIONS
RESEMBLES ECR CHANGES



3RD ANGLE

ECR: N/A DATE: 24-02-2016

LEVEL: 1

© ALL COPYRIGHTS BELONG TO OIKO, DATE 14-09-2016

PAGE: 11 OF 12

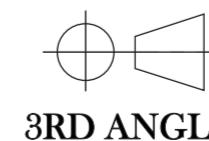
STEP 16

Your unit is now complete.
Finish it off by adding a
handle of your choice.



Designed By:
KSTENE
INDUSTRIAL DESIGN & ENGINEERING
INNOVATION INGENUITY INSPIRATION

* RESEMBLES CRITICAL DIMENSIONS
RESEMBLES ECR CHANGES



3RD ANGLE

ECR: N/A DATE: 24-02-2016

LEVEL: 1

© ALL COPYRIGHTS BELONG TO OIKO, DATE 14-09-2016

REVISION

CODE: GWB-020-001	TITLE: GA ASS	
	PART NUMBER: (GWB-020-001) GA ASS	SCALE : 1:8 (UOS)
METRIC ALL DIMENSIONS ARE IN mm	NAME	
	ENGINEERED BY: KOSTA KOUMENTAKOS	DATE 14-09-2016
	DRAWN BY: KOSTA KOUMENTAKOS	DATE 14-09-2016
	APPROVED BY: ANASTASIOS ASTERIOU	DATE 14-09-2016
PAGE: 12 OF 12		