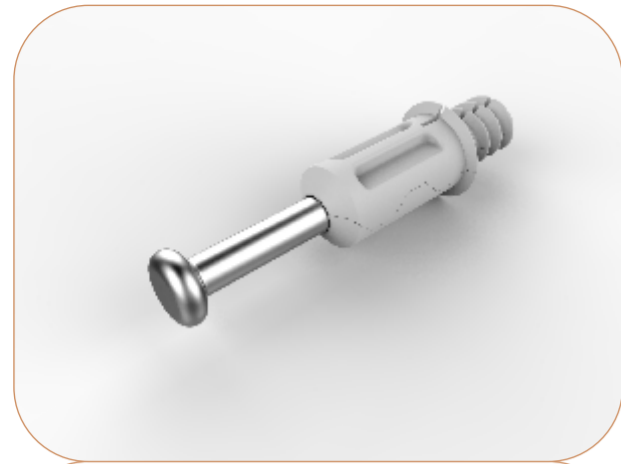


DIY Oven Unit 2 Door 2 Drawer



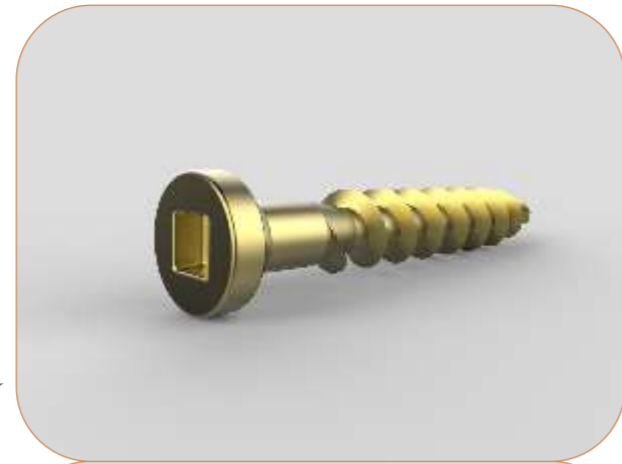
Code: (GWB-019-002)

STANDARD COMPONENTS INDEX



= **X24**

INDAUX EXPANDA PIN
34mm X 5mm



= **X16**

SQUARE HEAD WOOD
SCREW 6mm X 16mm



= **X24**

INDAUX CAM - 15mm



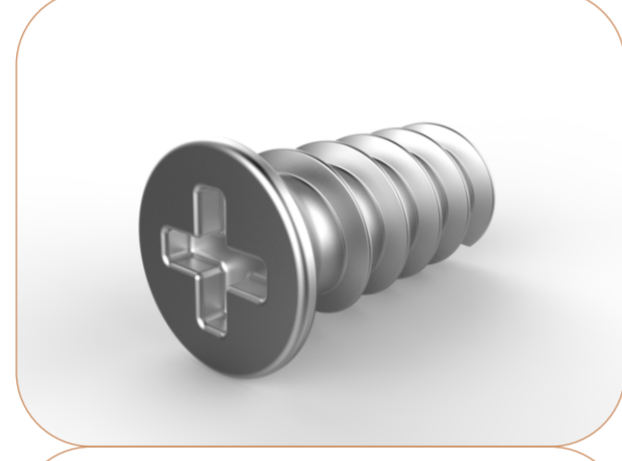
= **X4**

SQUARE HEAD WOOD
SCREW 6mm X 30mm



= **X48**

BIRCH DOWEL
8mm X 30mm



= **X32**

EURO SCREW
6 X 10mm



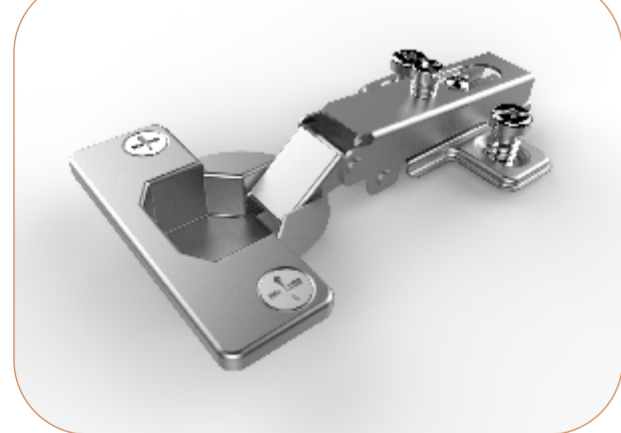
= **X4**

INDAUX MAMUL - 140mm



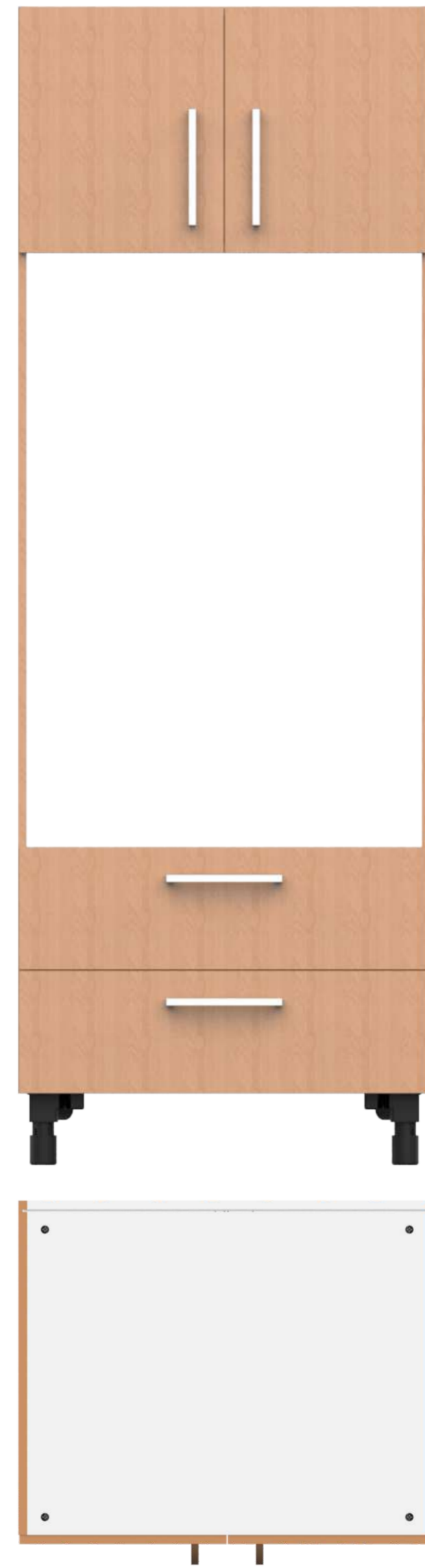
= **X2**

METABOX DRAWER SET
85mm



= **X4**

SDT HINGE CUP
110 DEGREES

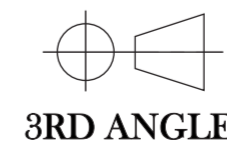


Designed By:
KSTENE
INDUSTRIAL DESIGN & ENGINEERING
INNOVATION INGENUITY INSPIRATION

* RESEMBLES CRITICAL DIMENSIONS
RESEMBLES ECR CHANGES

CODE:
GWB-019-002

METRIC
ALL DIMENSIONS
ARE IN
mm



ECR: N/A DATE: 24-02-2016

LEVEL: 1

© ALL COPYRIGHTS BELONG TO OIKO, DATE 07-09-2016

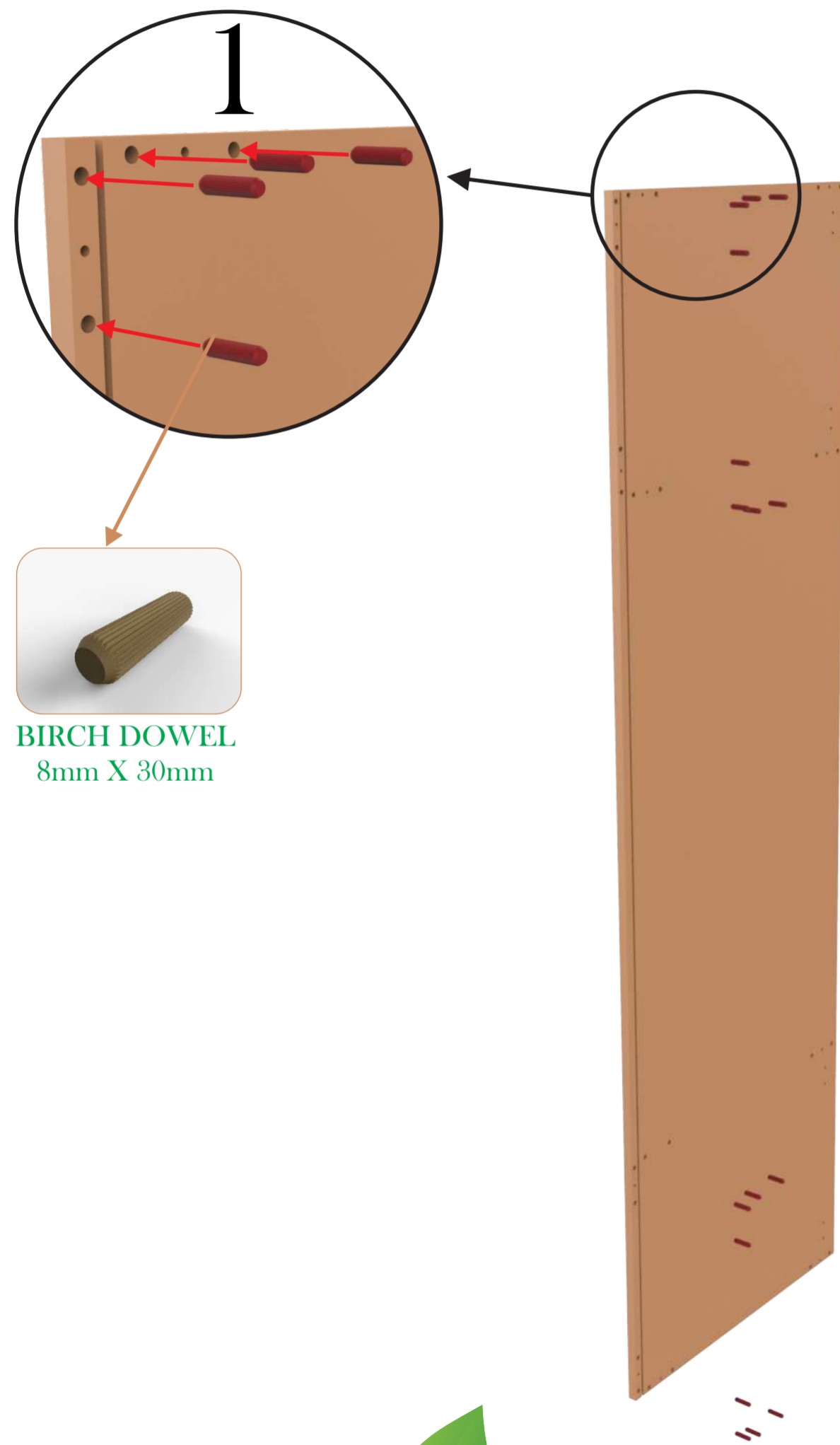
REVISION

TITLE: STANDARD COMPONENTS INDEX	
PART NUMBER: (GWB-019-002)	SCALE : 1:8 (UOS)
NAME	DATE
ENGINEERED BY: KOSTA KOUMENTAKOS	07-09-2016
DRAWN BY: KOSTA KOUMENTAKOS	07-09-2016
APPROVED BY: ANASTASIOS ASTERIOU	07-09-2016

PAGE: 1 OF 15

STEP 1

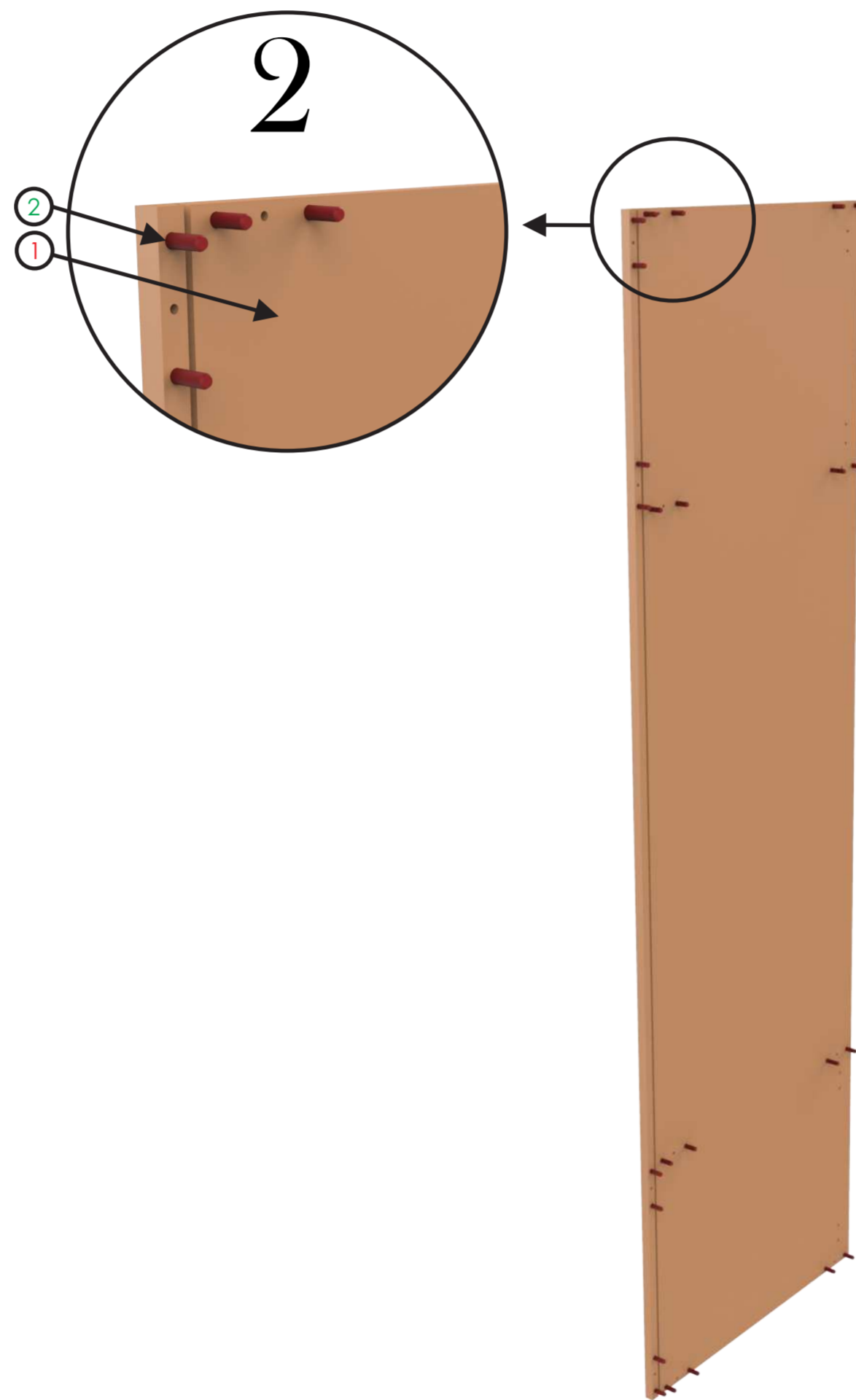
Place part **BIRCH DOWELS** into part **LEFT SIDE PANEL**, use the pre-drilled holes as shown in the pictures below:



BIRCH DOWEL
8mm X 30mm

NOTE:

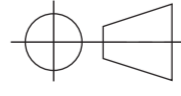
As done in STEP 1, place part **BIRCH DOWELS** into part **LEFT SIDE PANEL**, use the pre-drilled holes as shown in the pictures below:



WARNING:

Do not hit the **BIRCH DOWELS** into place as they could damage the exterior of the **SIDE PANELS**.

ITEM NO:	DRAWING NUMBER:	DESCRIPTION:	MATERIAL:	QTY:
1	(GWB-019-002-002)	LEFT SIDE PANEL	16mm MELAMINE	1
2	N/A	BIRCH DOWEL - 8mm x 30mm	N/A	24

REVISION	
CODE: GWB-019-002	TITLE: LEFT AND RIGHT PANEL + DOWELS SUB ASS
METRIC ALL DIMENSIONS ARE IN mm	PART NUMBER: (GWB-019-002-002) SUB ASS SCALE : 1:8 (UOS)
 3RD ANGLE	NAME
	ENGINEERED BY: KOSTA KOUMENTAKOS
	DATE
	ENGINEERED BY: KOSTA KOUMENTAKOS 07-09-2016
	DRAWN BY: KOSTA KOUMENTAKOS 07-09-2016
	APPROVED BY: ANASTASIOS ASTERIOU 07-09-2016



Designed By:
KSTENE
INDUSTRIAL DESIGN & ENGINEERING
INNOVATION INGENUITY INSPIRATION

* RESEMBLES CRITICAL DIMENSIONS
RESEMBLES ECR CHANGES

ECR: N/A DATE: 24-02-2016

LEVEL: 1

© ALL COPYRIGHTS BELONG TO OIKO, DATE 07-09-2016

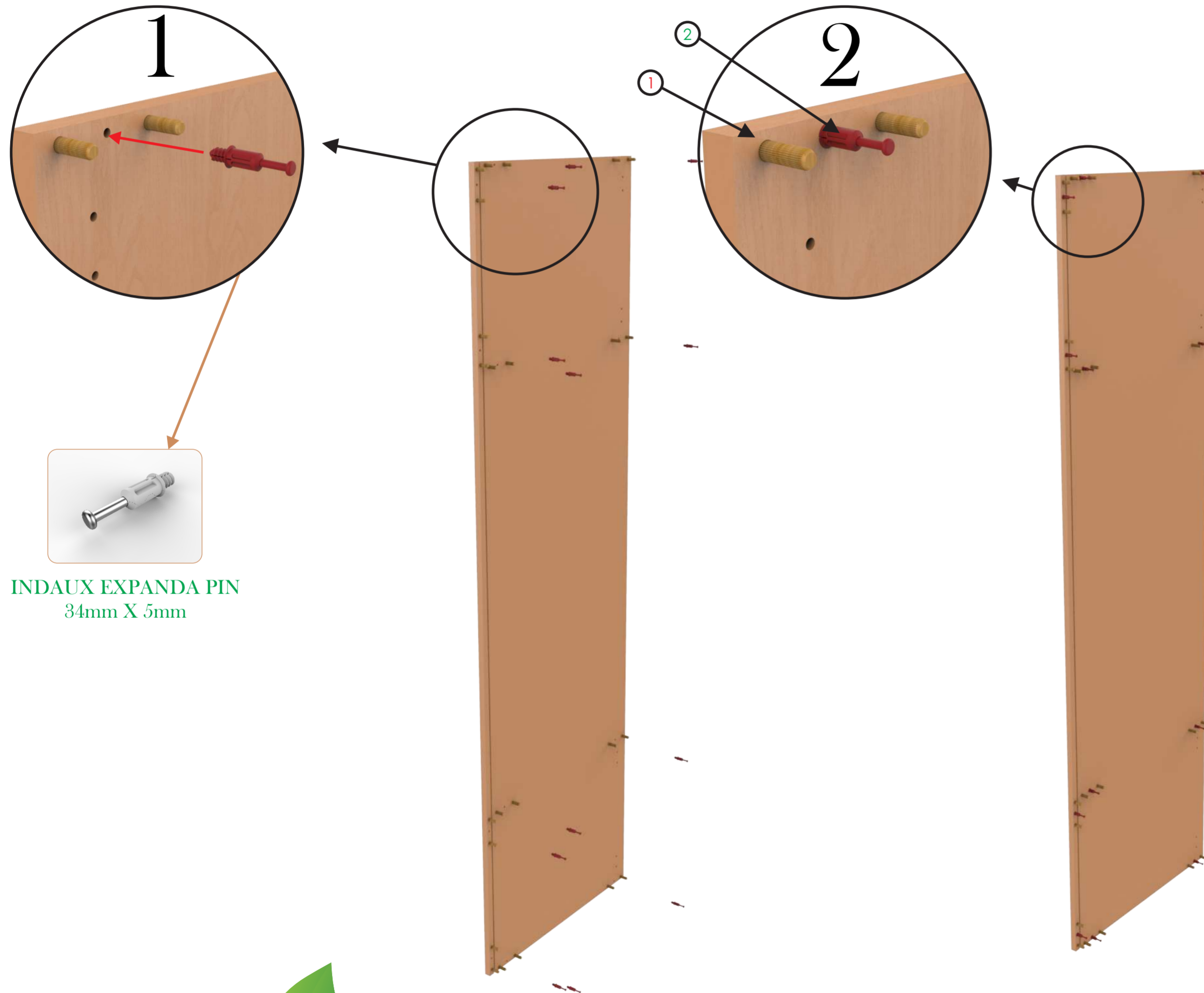
PAGE: 2 OF 15

STEP 2

Place part **INDAUX EXPANDA PIN** into part **LEFT AND RIGHT SIDE PANEL + DOWELS SUB ASS**, use the pre-drilled holes as shown in the pictures below:

NOTE:

You should have 2 sub assemblies like this.



INDAUX EXPANDA PIN
34mm X 5mm

ITEM NO:	DRAWING NUMBER:	DESCRIPTION:	MATERIAL:	QTY:
1	(GWB-019-002-002) SUB ASS	LEFT AND RIGHT PANEL + DOWELS SUB ASS	N/A	1
2	N/A	INDAUX EXPANDA PIN - 34mm X 5mm	N/A	12

REVISION	
CODE: GWB-019-002	TITLE: LEFT AND RIGHT PANEL + EXPANA PIN SUB ASS
METRIC ALL DIMENSIONS ARE IN mm	PART NUMBER: (GWB-019-002-003) SUB ASS SCALE : 1:8 (UOS)
	NAME DATE
	ENGINEERED BY: KOSTA KOUMENTAKOS 07-09-2016
	DRAWN BY: KOSTA KOUMENTAKOS 07-09-2016
	APPROVED BY: ANASTASIOS ASTERIOU 07-09-2016



Designed By:
KSTENE
INDUSTRIAL DESIGN & ENGINEERING
INNOVATION INGENUITY INSPIRATION

* RESEMBLES CRITICAL DIMENSIONS
RESEMBLES ECR CHANGES



ECR: N/A DATE: 24-02-2016

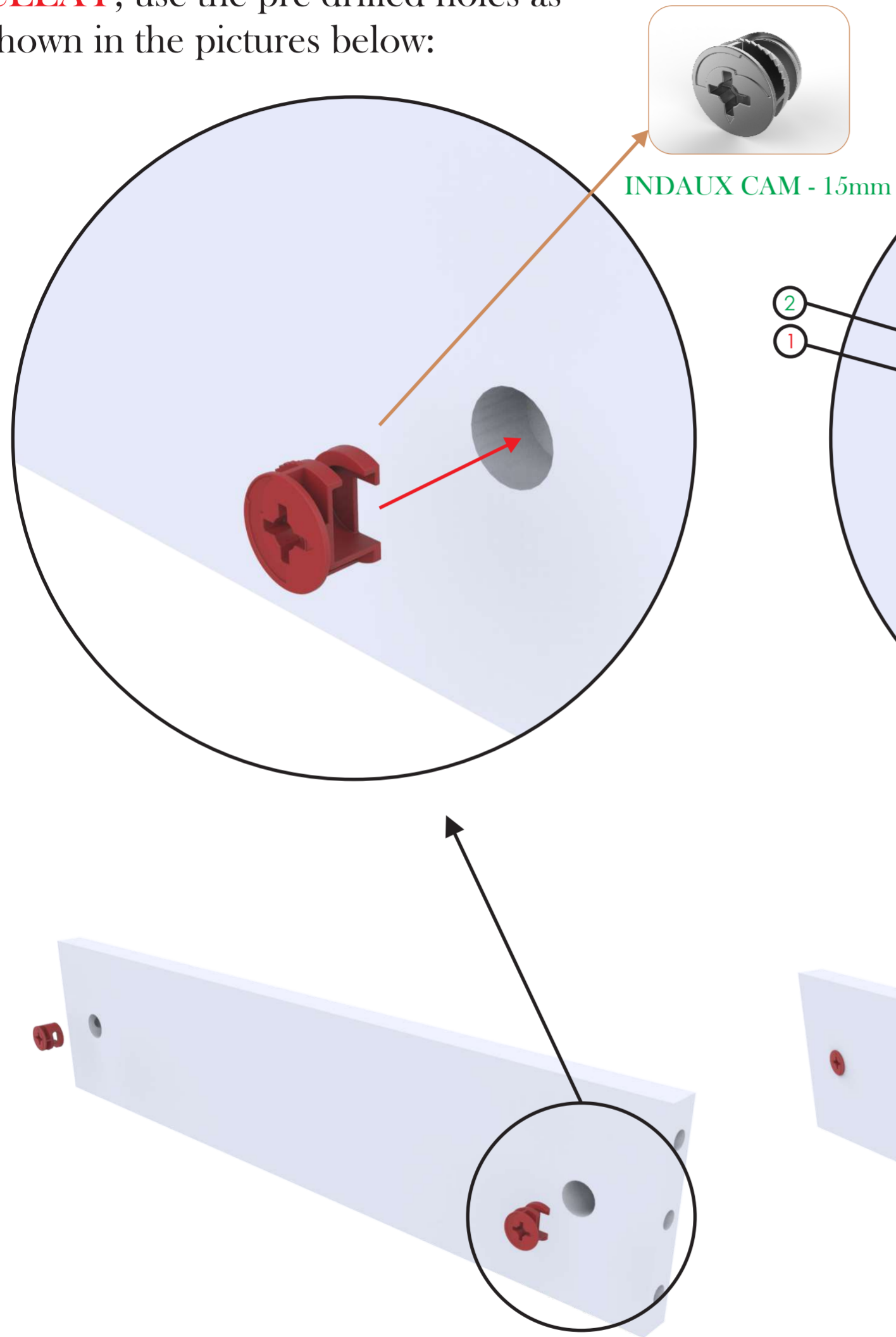
LEVEL: 1

© ALL COPYRIGHTS BELONG TO OIKO, DATE 07-09-2016

PAGE: 3 OF 15

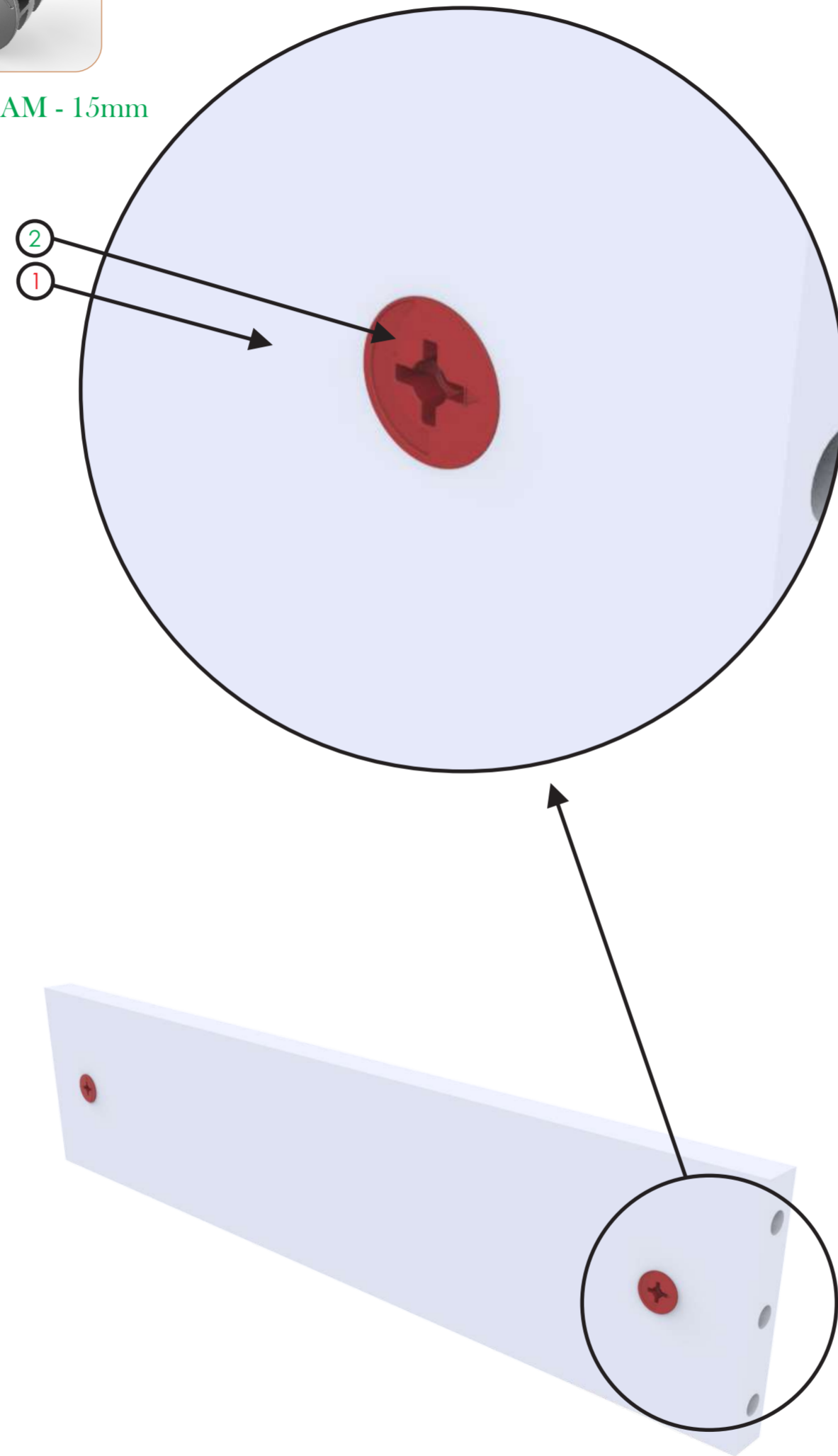
STEP 3

Place part **INDAUX CAM** into part **CLEAT**, use the pre-drilled holes as shown in the pictures below:



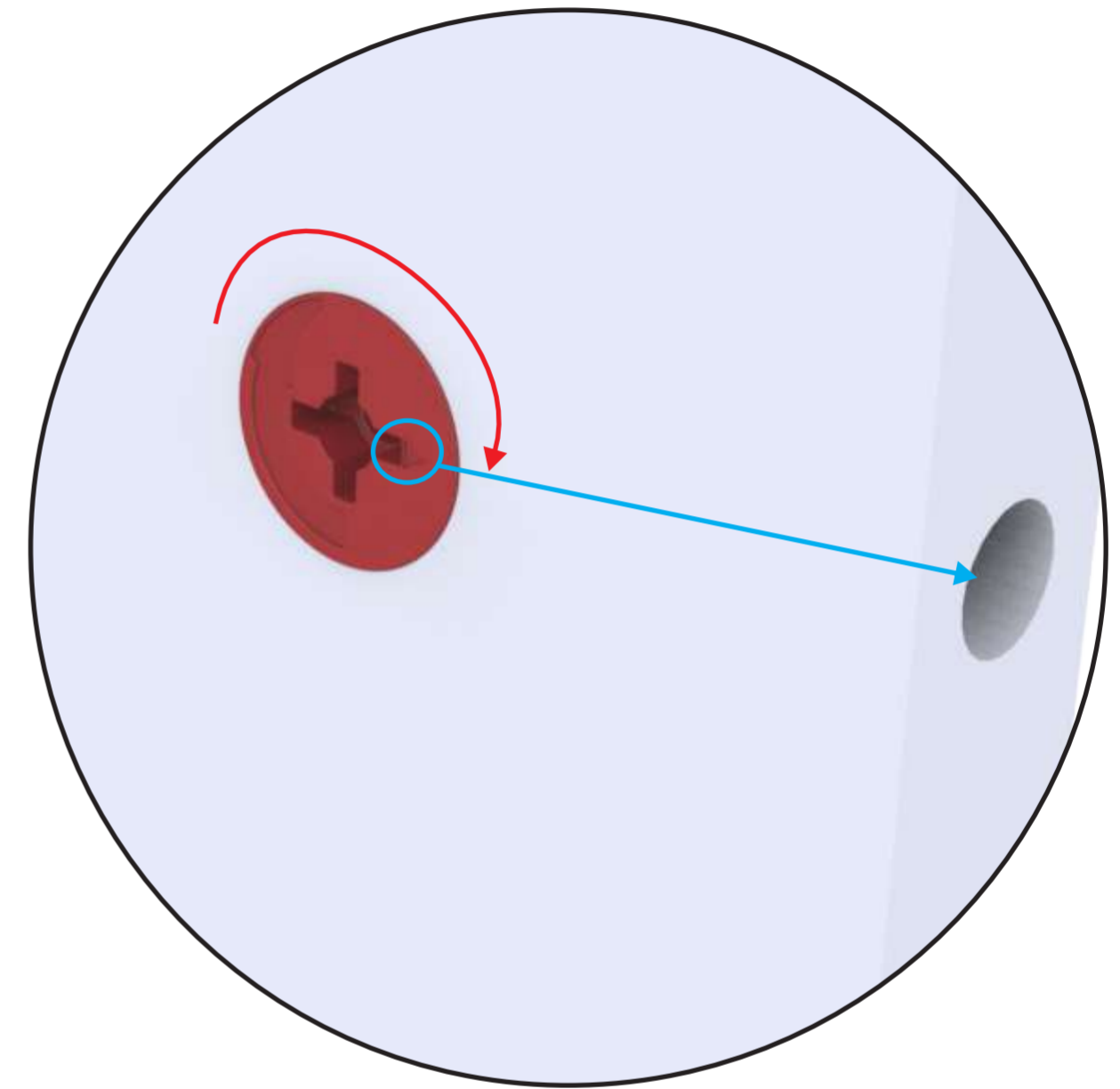
NOTE:

You should have 4 sub assemblies like this.



STEP 4

Turn part **INDAUX CAM** so that the arrow faces the edge of the board where the **INDAUX EXPANDA PIN** hole has been drilled. See below:



ITEM NO:	DRAWING NUMBER:	DESCRIPTION:	MATERIAL:	QTY:
1	(GWB-019-002-006)	CLEAT	16mm MELAMINE	1
2	N/A	INDAUX CAM - 15mm	N/A	2

REVISION		
CODE: GWB-019-002	TITLE: CLEAT + CAM SUB ASS	
	PART NUMBER: (GWB-019-002-005) SUB ASS	SCALE : 1:8 (UOS)
METRIC ALL DIMENSIONS ARE IN mm	NAME	
	ENGINEERED BY: KOSTA KOUMENTAKOS	DATE 07-09-2016
	DRAWN BY: KOSTA KOUMENTAKOS	DATE 07-09-2016
3RD ANGLE	APPROVED BY: ANASTASIOS ASTERIOU	
	DATE 07-09-2016	



Designed By:
KSTENE
INDUSTRIAL DESIGN & ENGINEERING
INNOVATION INGENUITY INSPIRATION

* RESEMBLES CRITICAL DIMENSIONS
RESEMBLES ECR CHANGES

ECR: N/A DATE: 24-02-2016

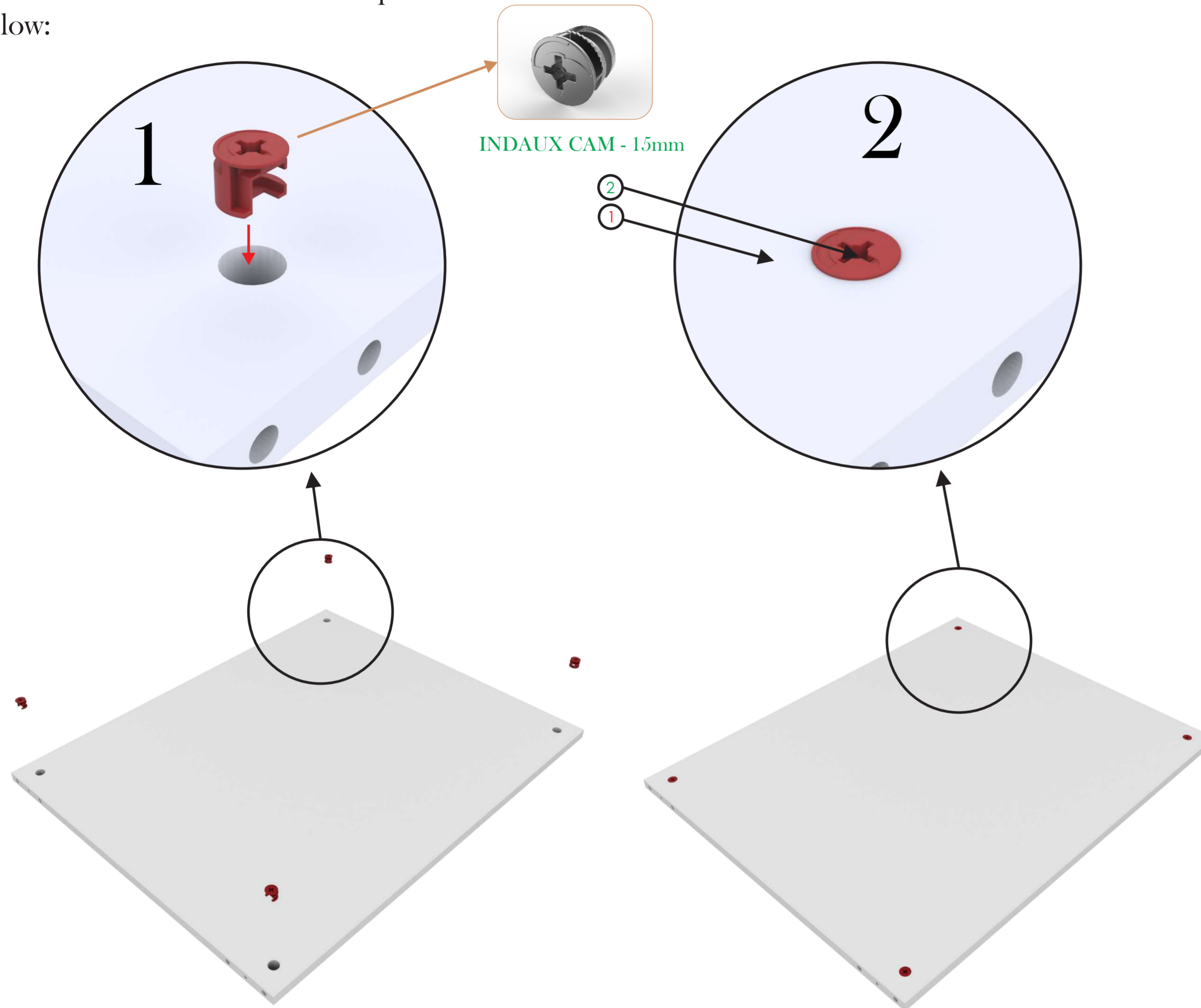
LEVEL: 1

© ALL COPYRIGHTS BELONG TO OIKO, DATE 07-09-2016

PAGE: 4 OF 15

STEP 5

Place part **INDAUX CAM** into part **TOP AND BOTTOM PANEL**, use the pre-drilled holes as shown in the pictures below:

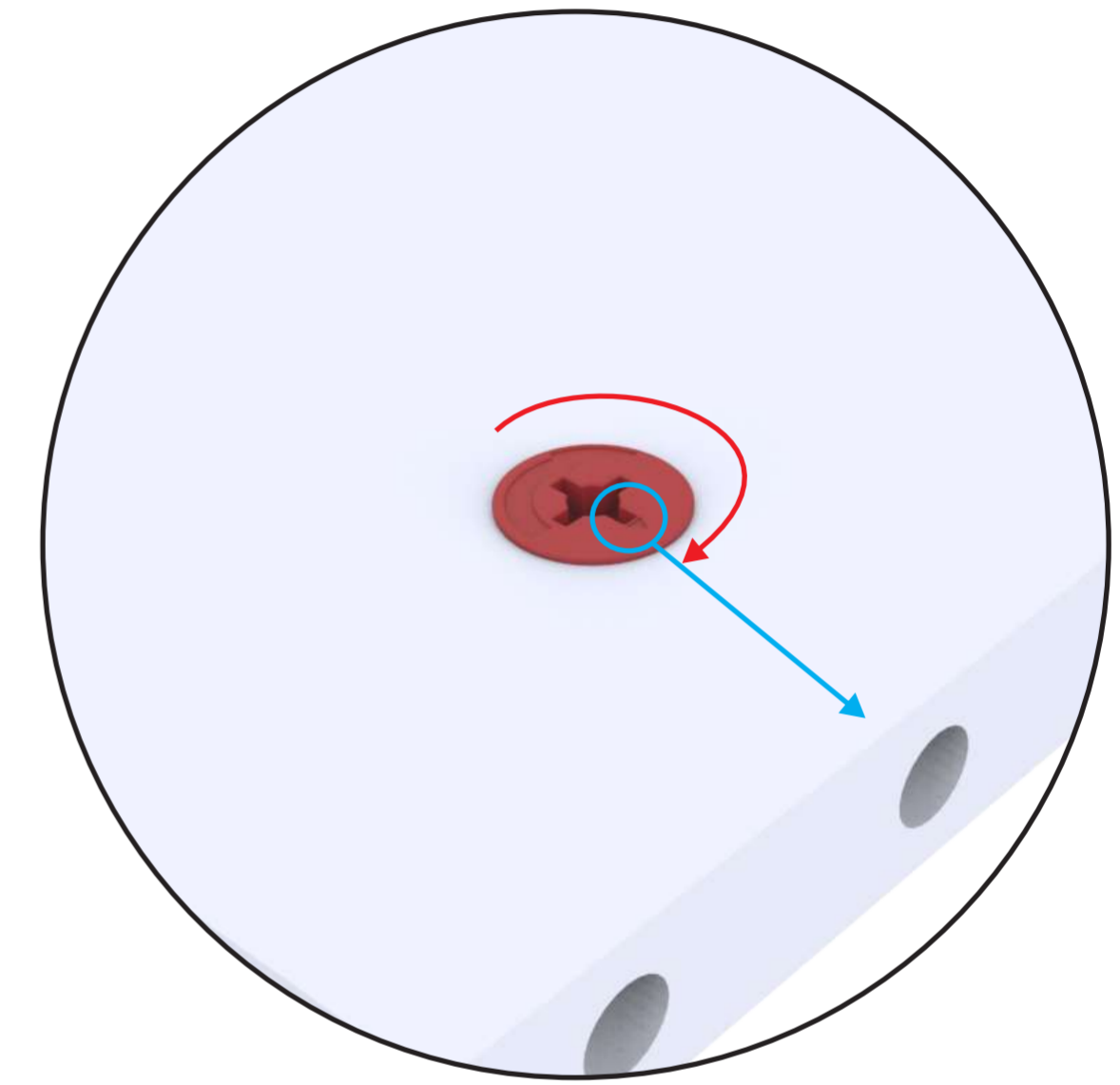


NOTE:

You should have 4 sub assemblies like this.

STEP 6

Turn part **INDAUX CAM** so that the arrow faces the edge of the board where the **INDAUX EXPANDA PIN** hole has been drilled. See below:



ITEM NO:	DRAWING NUMBER:	DESCRIPTION:	MATERIAL:	QTY:
1	(GWB-019-002-004)	TOP & BOTTOM PANEL	16mm MELAMINE	1
2	N/A	INDAUX CAM - 15mm	N/A	4

REVISION	
CODE: GWB-019-002	TITLE: TOP AND BOTTOM PANEL + CAM SUB ASS
METRIC ALL DIMENSIONS ARE IN mm	PART NUMBER: (GWB-019-002-004) SUB ASS
	SCALE : 1:8 (UOS)
	NAME
	DATE
	ENGINEERED BY: KOSTA KOUMENTAKOS
	DATE
	DRAWN BY: KOSTA KOUMENTAKOS
	DATE
	APPROVED BY: ANASTASIOS ASTERIOU
	DATE



Designed By:
KSTENE
INDUSTRIAL DESIGN & ENGINEERING
INNOVATION INGENUITY INSPIRATION

* RESEMBLES CRITICAL DIMENSIONS
RESEMBLES ECR CHANGES



3RD ANGLE

ECR: N/A DATE: 24-02-2016

LEVEL: 1

© ALL COPYRIGHTS BELONG TO OIKO, DATE 07-09-2016

PAGE: 5 OF 15

STEP 7

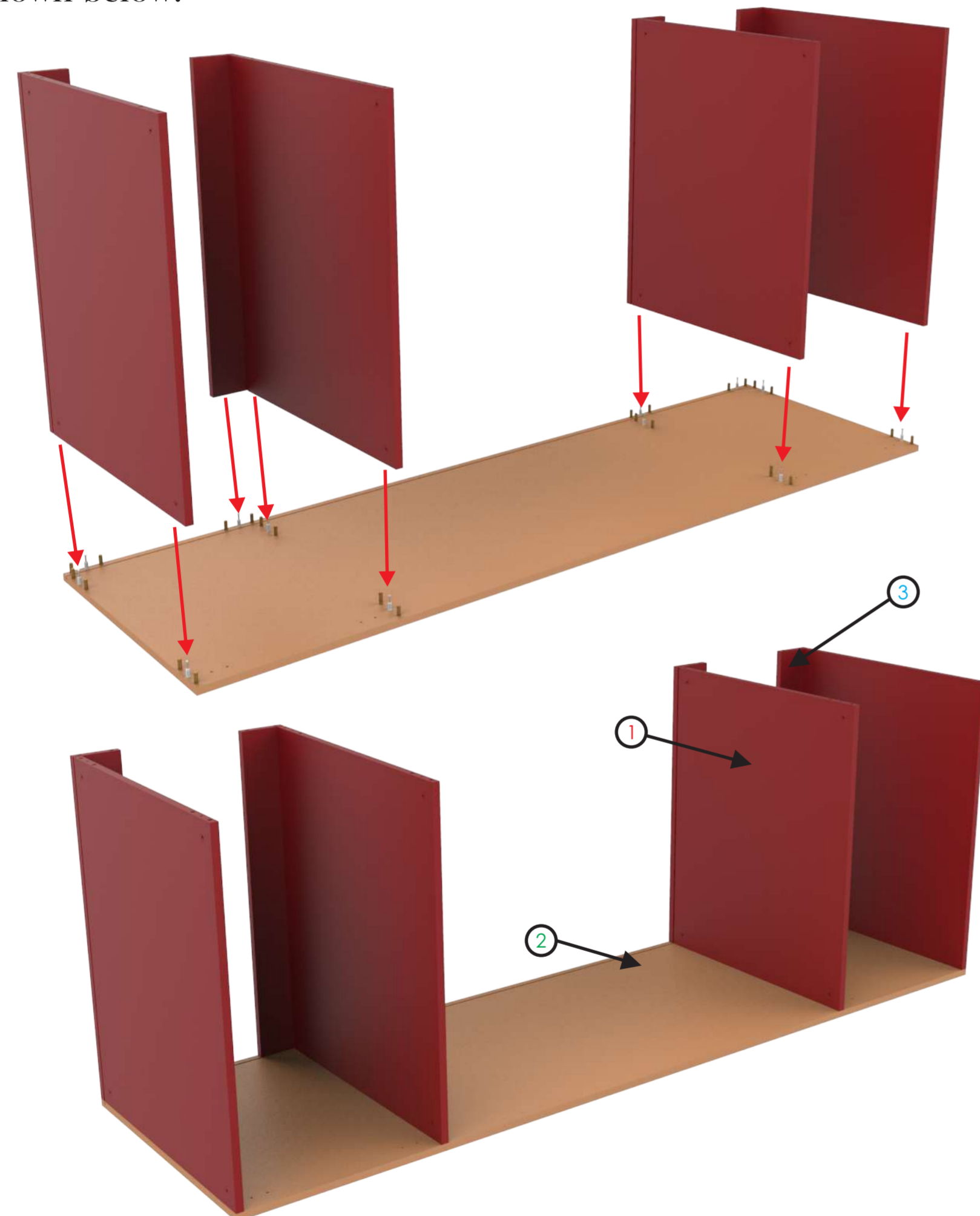
Assemble sub assemblies

CLEAT + CAM SUB ASS

TOP AND BOTTOM PANEL + CAM SUB ASS

LEFT AND RIGHT PANEL + EXPANDA PIN SUB ASS

as shown below:

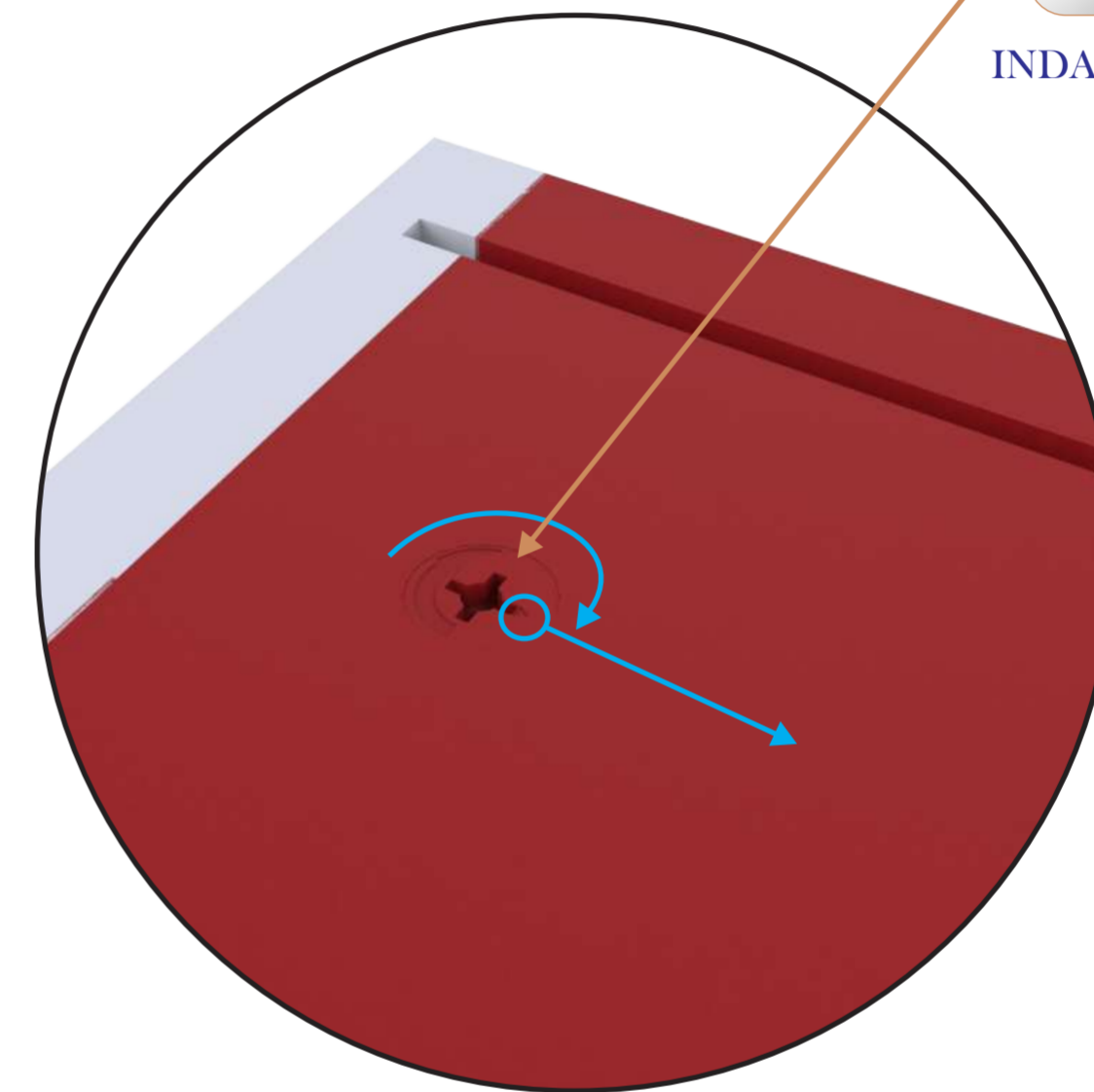


STEP 8

Now turn the **INDAUX CAM - 15mm** 180° clockwise to fasten all the panels together.



INDAUX CAM - 15mm



ITEM NO:	DRAWING NUMBER:	DESCRIPTION:	MATERIAL:	QTY:
1	(GWB-019-002-003) SUB ASS	LEFT AND RIGHT PANEL + EXPANDA PIN SUB ASS	N/A	1
2	(GWB-019-002-004) SUB ASS	TOP AND BOTTOM PANEL + CAM SUB ASS	N/A	2
3	(GWB-019-002-005) SUB ASS	CLEAT + CAM SUB ASS	N/A	4

REVISION	
CODE: GWB-019-002	TITLE: SIDES + CLEATS + TOP AND BOTTOM PANEL SUB ASS
	PART NUMBER: (GWB-019-002-006) SUB ASS SCALE : 1:8 (UOS)
METRIC ALL DIMENSIONS ARE IN mm	NAME
	ENGINEERED BY: KOSTA KOUMENTAKOS 07-09-2016
	DRAWN BY: KOSTA KOUMENTAKOS 07-09-2016
3RD ANGLE	APPROVED BY: ANASTASIOS ASTERIOU 07-09-2016



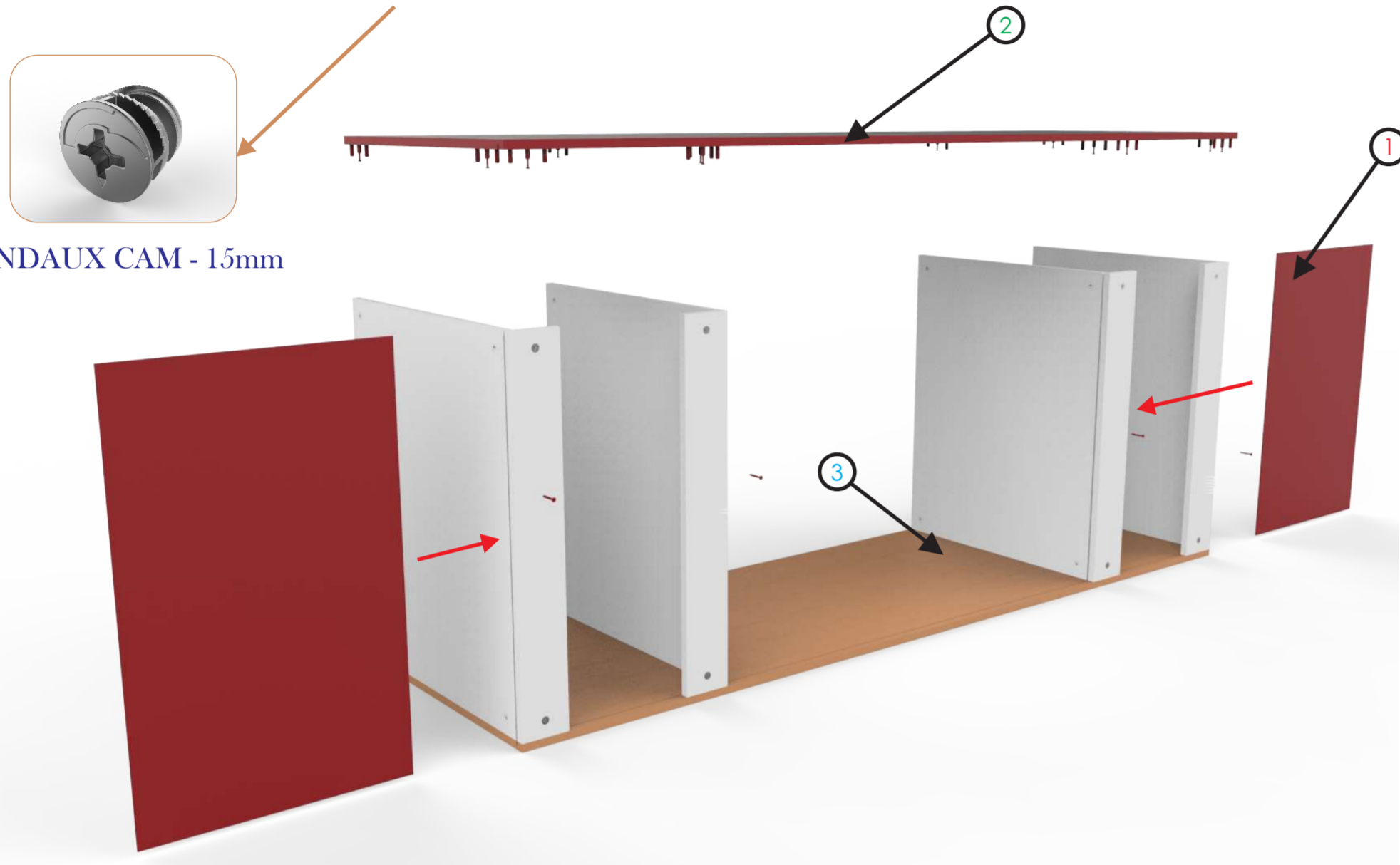
Designed By:
KSTENE
INDUSTRIAL DESIGN & ENGINEERING
INNOVATION INGENUITY INSPIRATION

* RESEMBLES CRITICAL DIMENSIONS
RESEMBLES ECR CHANGES



STEP 9

Place assembly **LEFT AND RIGHT PANEL + DOWELS SUB ASS** into assembly **SIDES + CLEATS + TOP AND BOTTOM PANEL SUB ASS** but do not fasten the **INDAUX CAM**. See below:



INDAUX CAM - 15mm

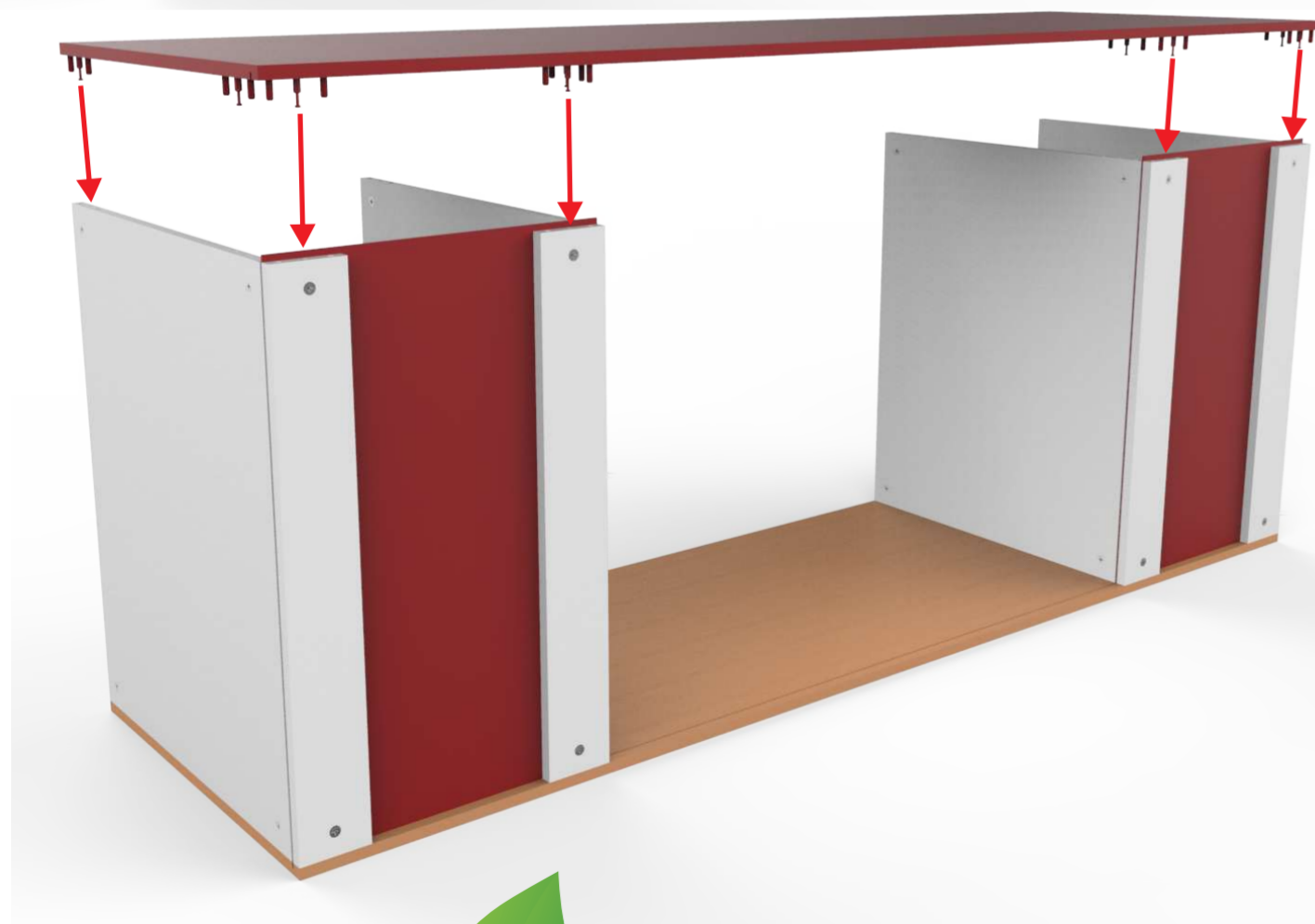
STEP 10

Slide part **BACKING** into your current assembly. Gently knock into the groove provided on the side panels, make sure that all the parts sit flush to one another. Your assembly should look like the picture below:

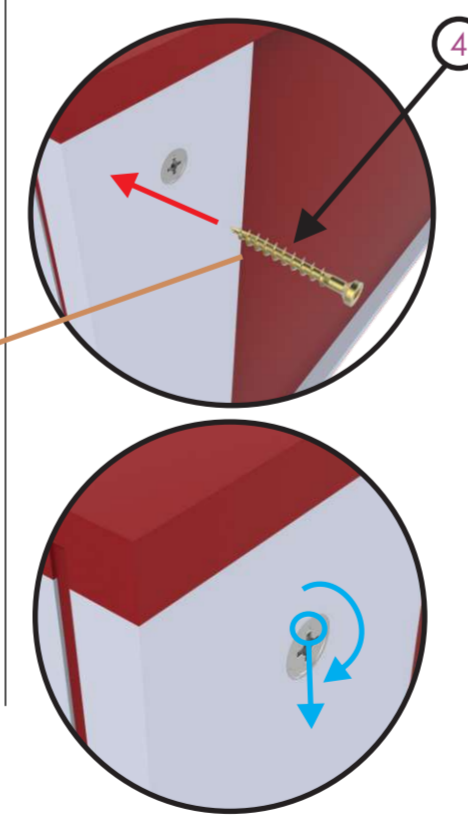


STEP 11

Fasten the **INDAUX CAMS** to secure assembly **LEFT AND RIGHT PANEL + DOWELS SUB ASS**. Finally screw in the **SQUARE HEAD WOOD SCREW** as seen in the pictures below:



SQUARE HEAD WOOD SCREW 6mm X 30mm

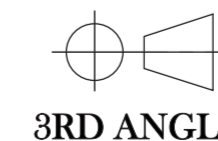


ITEM NO:	DRAWING NUMBER:	DESCRIPTION:	MATERIAL:	QTY:
1	(GWB-019-002-003)	BACKING	4mm MELAMINE	2
2	(GWB-019-002-002) SUB ASS	LEFT AND RIGHT PANEL + DOWELS SUB ASS	N/A	1
3	(GWB-019-002-006) SUB ASS	SIDES + CLEATS + TOP AND BOTTOM PANEL SUB ASS	N/A	1
4	N/A	SQUARE HEAD WOOD SCREW 6mm X 30mm	N/A	4



Designed By:
KSTENE
INDUSTRIAL DESIGN & ENGINEERING
INNOVATION INGENUITY INSPIRATION

* RESEMBLES CRITICAL DIMENSIONS
RESEMBLES ECR CHANGES



3RD ANGLE

REVISION	
CODE: GWB-019-002	TITLE: BACKING BOARD + RIGHT PANEL SUB ASS
METRIC ALL DIMENSIONS ARE IN mm	PART NUMBER: (GWB-019-002-007) SUB ASS SCALE : 1:8 (UOS)
	NAME DATE
	ENGINEERED BY: KOSTA KOUMENTAKOS 07-09-2016
	DRAWN BY: KOSTA KOUMENTAKOS 07-09-2016
	APPROVED BY: ANASTASIOS ASTERIOU 07-09-2016

ECR: N/A DATE: 24-02-2016

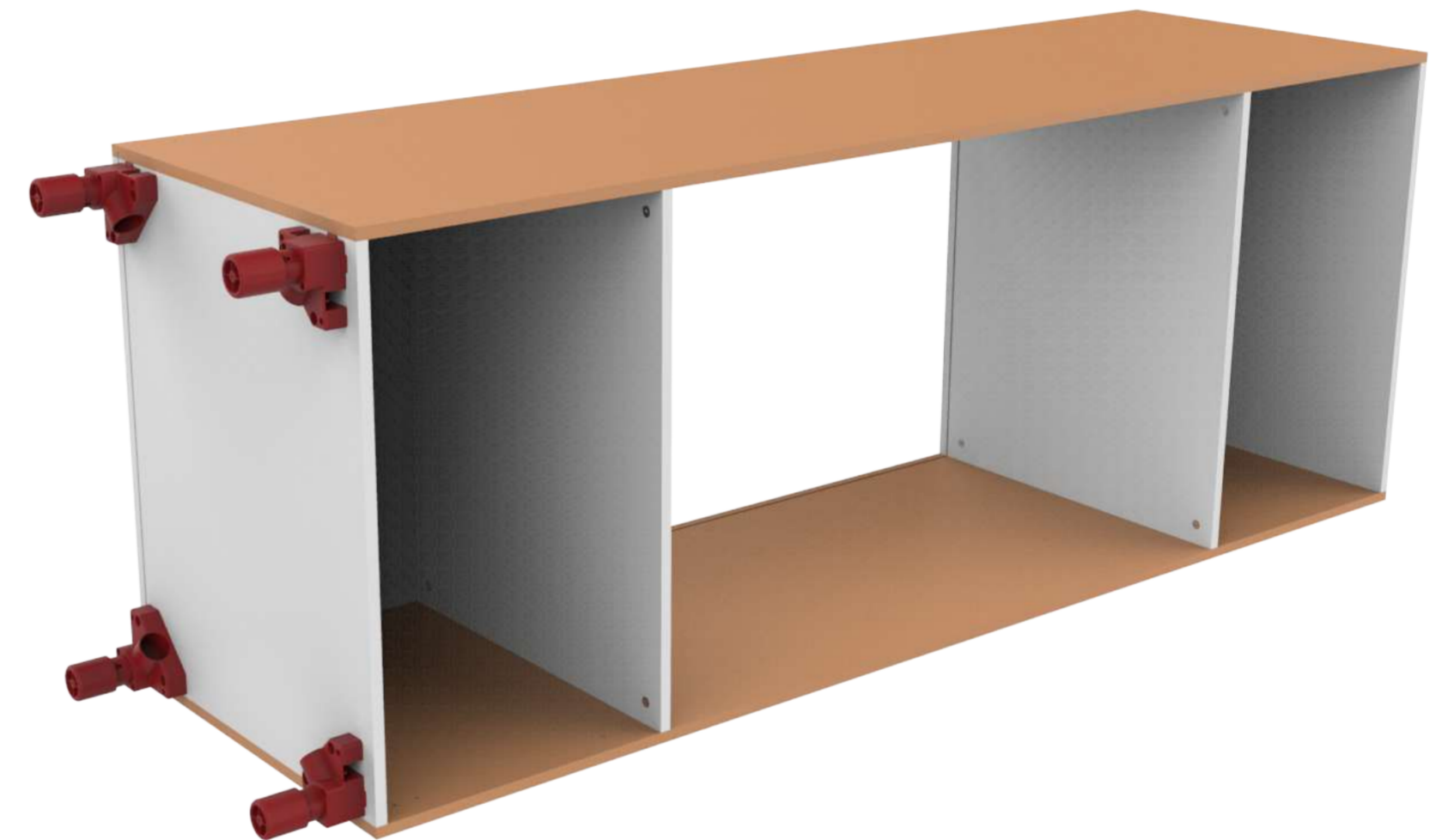
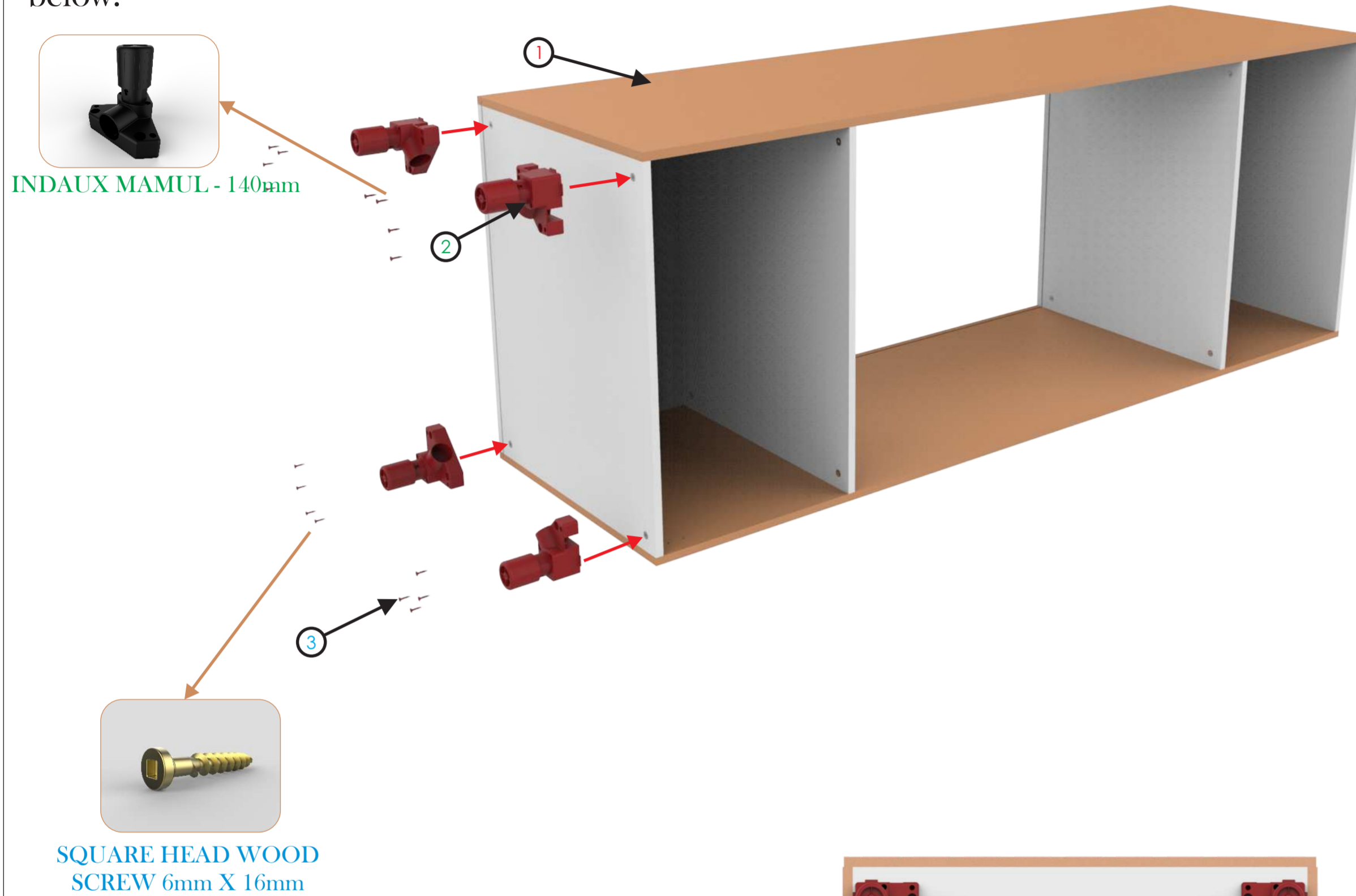
LEVEL: 1

© ALL COPYRIGHTS BELONG TO OIKO, DATE 07-09-2016

PAGE: 7 OF 15

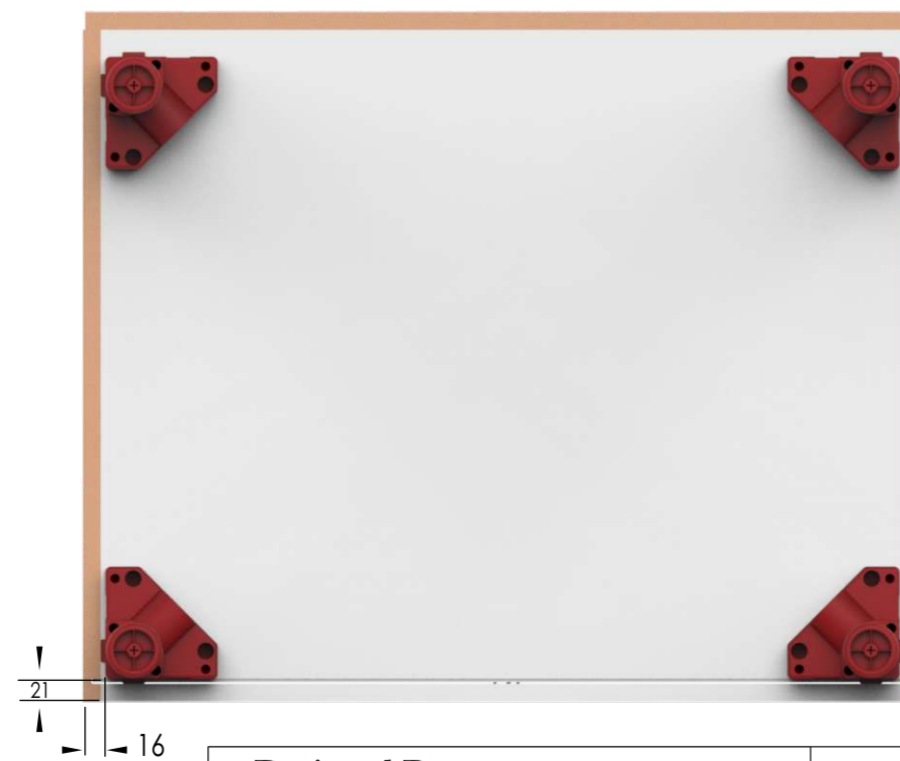
STEP 12

Screw the **INDAUX MAMUL** feet into the unit using parts **SQUARE HEAD WOOD SCREW** as shown below:



WARNING

Assemble the **INDAUX MAMUL** feet in the positioning/spacing as shown in the picture on the right:



ITEM NO:	DRAWING NUMBER:	DESCRIPTION:	MATERIAL:	QTY:
1	(GWB-019-002-007) SUB ASS	BACKING BOARD + RIGHT PANEL SUB ASS	N/A	1
2	N/A	INDAUX MAMUL - 140mm	N/A	4
3	N/A	SQUARE HEAD WOOD SCREW 6mm X 12mm	N/A	16

REVISION	
CODE: GWB-019-002	TITLE: FEET SUB ASS
METRIC ALL DIMENSIONS ARE IN mm	PART NUMBER: (GWB-019-002-008) SUB ASS
 3RD ANGLE	SCALE : 1:8 (UOS)
	NAME
	DATE
	ENGINEERED BY: KOSTA KOUMENTAKOS
	DATE
	07-09-2016
	07-09-2016
	07-09-2016
	APPROVED BY: ANASTASIOS ASTERIOU
	07-09-2016



Designed By:
KSTENE
INDUSTRIAL DESIGN & ENGINEERING
INNOVATION INGENUITY INSPIRATION

* RESEMBLES CRITICAL DIMENSIONS
RESEMBLES ECR CHANGES

ECR: N/A DATE: 24-02-2016

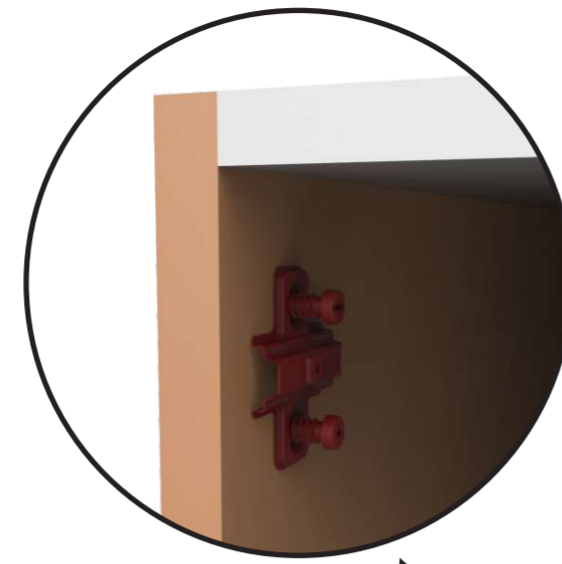
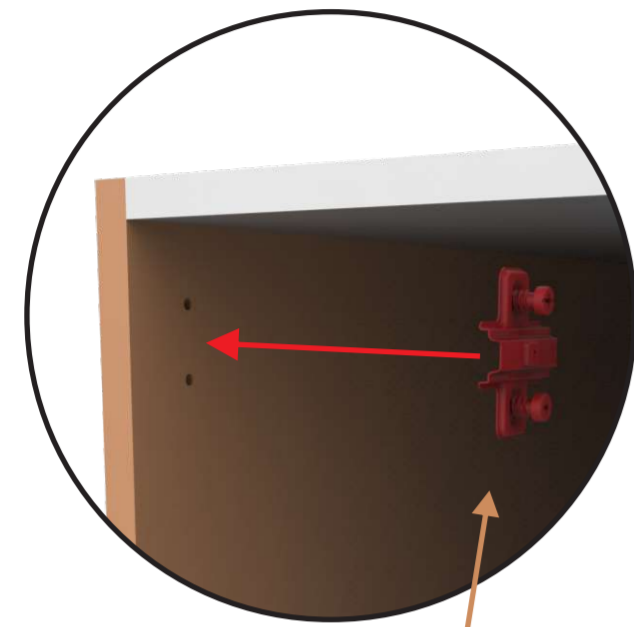
LEVEL: 1

© ALL COPYRIGHTS BELONG TO OIKO, DATE 07-09-2016

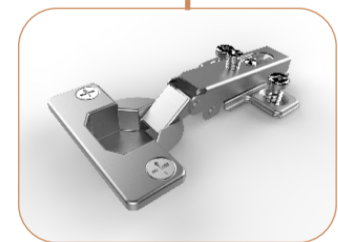
PAGE: 8 OF 15

STEP 13

Screw parts **SDT HINGE BASE PLATE 110 DEGREES SUB ASS** into the unit as shown below:



SDT HINGE BASE PLATE 110 DEGREES SUB ASS



SDT HINGE CUP 110 DEGREES



ITEM NO:	DRAWING NUMBER:	DESCRIPTION:	MATERIAL:	QTY:
1	(GWB-019-002-008) SUB ASS	FEET SUB ASS	N/A	1
2	N/A	SDT HINGE BASE PLATE 110 DEGREES SUB ASS	N/A	4

REVISION		
CODE: GWB-019-002	TITLE: HINGE BASE PLATE SUB ASS	
	PART NUMBER: (GWB-019-002-009)SUB ASS	SCALE : 1:8 (UOS)
METRIC ALL DIMENSIONS ARE IN mm	NAME	DATE
	ENGINEERED BY: KOSTA KOUMENTAKOS	07-09-2016
	DRAWN BY: KOSTA KOUMENTAKOS	07-09-2016
3RD ANGLE	APPROVED BY: ANASTASIOS ASTERIOU	07-09-2016



Designed By:
KSTENE
INDUSTRIAL DESIGN & ENGINEERING
INNOVATION INGENUITY INSPIRATION

* RESEMBLES CRITICAL DIMENSIONS
RESEMBLES ECR CHANGES



ECR: N/A DATE: 24-02-2016

LEVEL: 1

© ALL COPYRIGHTS BELONG TO OIKO, DATE 07-09-2016

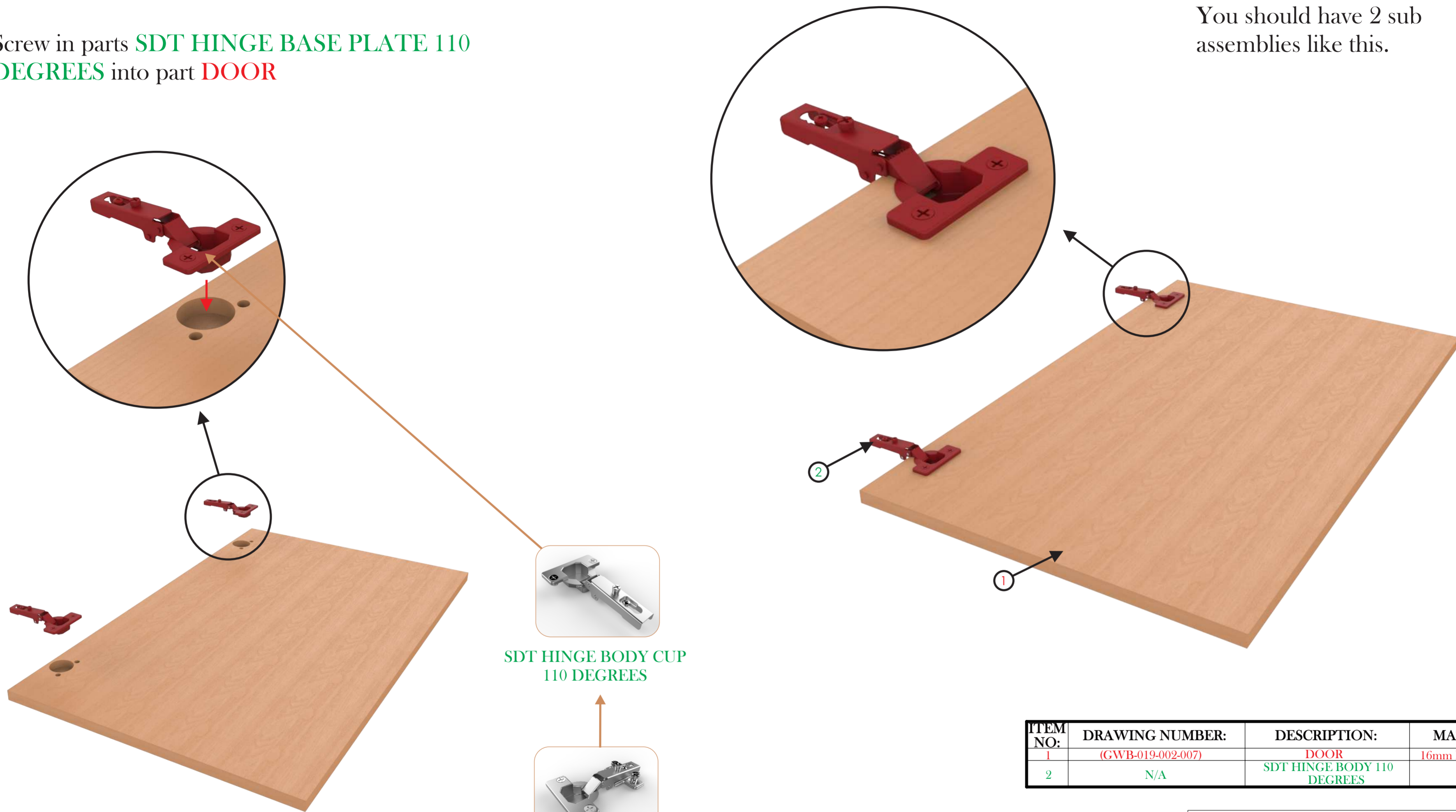
PAGE: 9 OF 15

STEP 14

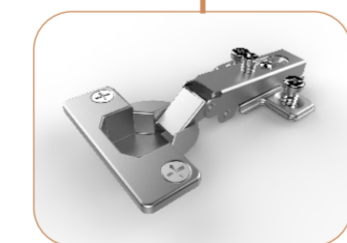
Screw in parts **SDT HINGE BASE PLATE 110 DEGREES** into part **DOOR**

NOTE:

You should have 2 sub assemblies like this.



SDT HINGE BODY CUP
110 DEGREES



SDT HINGE CUP
110 DEGREES

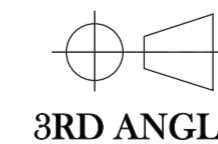
ITEM NO:	DRAWING NUMBER:	DESCRIPTION:	MATERIAL:	QTY:
1	(GWB-019-002-007)	DOOR	16mm MELAMINE	1
2	N/A	SDT HINGE BODY 110 DEGREES	N/A	2

REVISION		
CODE: GWB-019-002	TITLE: DOOR + HINGE BRIDGE SUB ASS	
	PART NUMBER: (GWB-019-002-010) SUB ASS	SCALE : 1:8 (UOS)
METRIC ALL DIMENSIONS ARE IN mm	NAME	DATE
	ENGINEERED BY: KOSTA KOUMENTAKOS	07-09-2016
	DRAWN BY: KOSTA KOUMENTAKOS	07-09-2016
3RD ANGLE	APPROVED BY: ANASTASIOS ASTERIOU	07-09-2016



Designed By:
KSTENE
INDUSTRIAL DESIGN & ENGINEERING
INNOVATION INGENUITY INSPIRATION

* RESEMBLES CRITICAL DIMENSIONS
RESEMBLES ECR CHANGES



ECR: N/A DATE: 24-02-2016

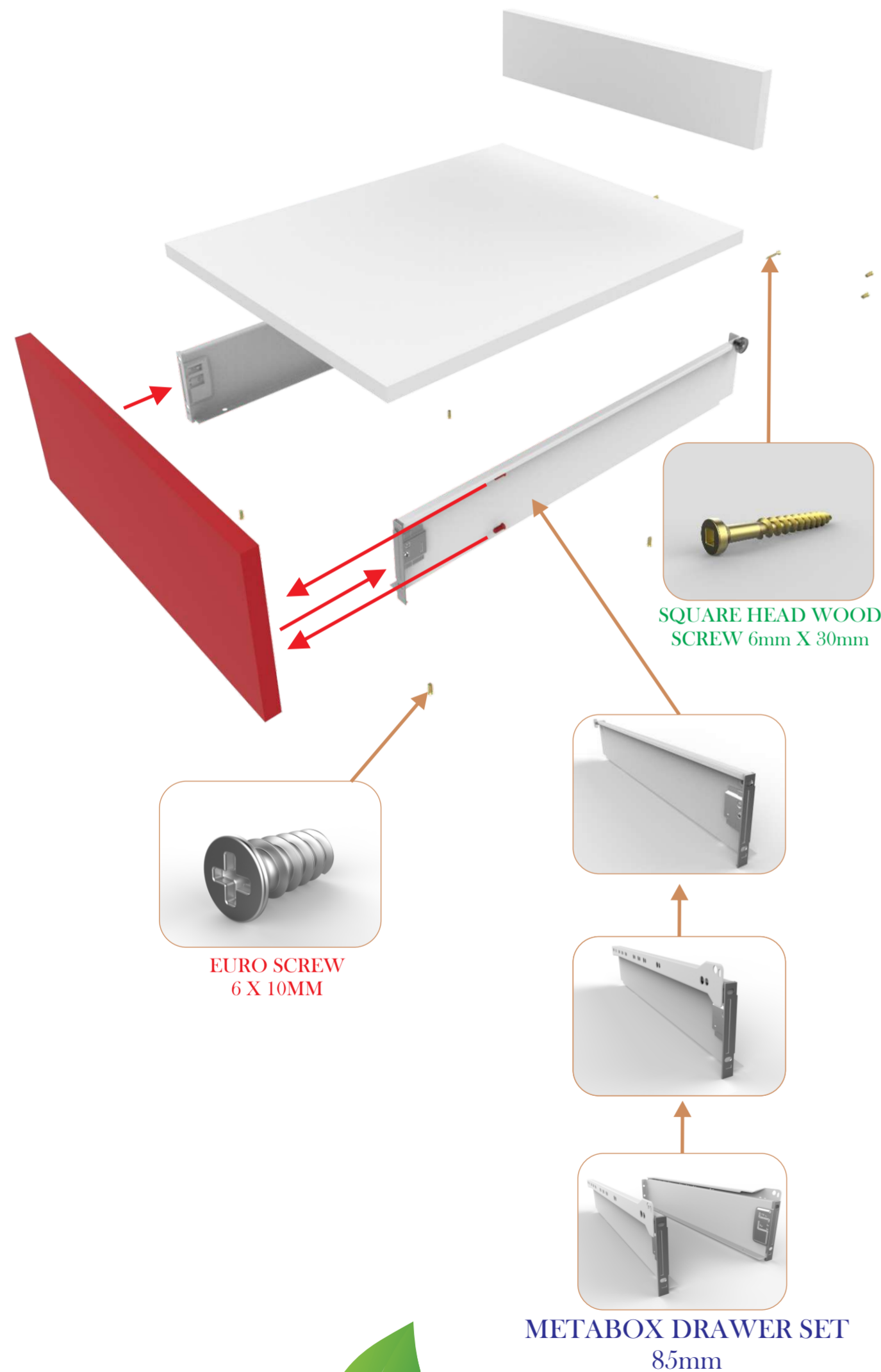
LEVEL: 1

© ALL COPYRIGHTS BELONG TO OIKO, DATE 07-09-2016

PAGE: 10 OF 15

STEP 15

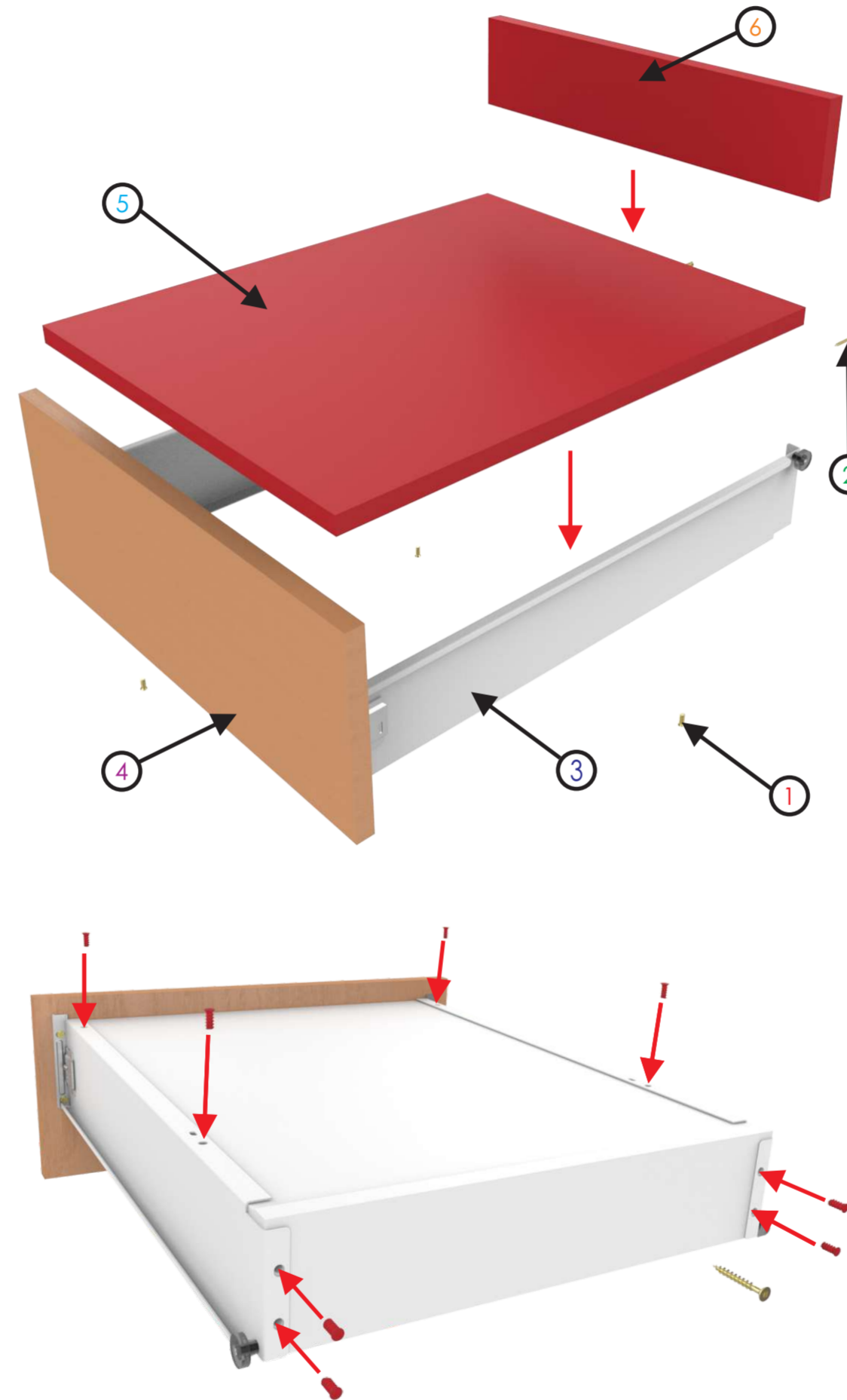
Screw in part **DRAWER FRONT** into parts **METABOX DRAWER SET 85mm** using 4 **EURO SCREW 6 X 10** as shown below:



METABOX DRAWER SET
85mm

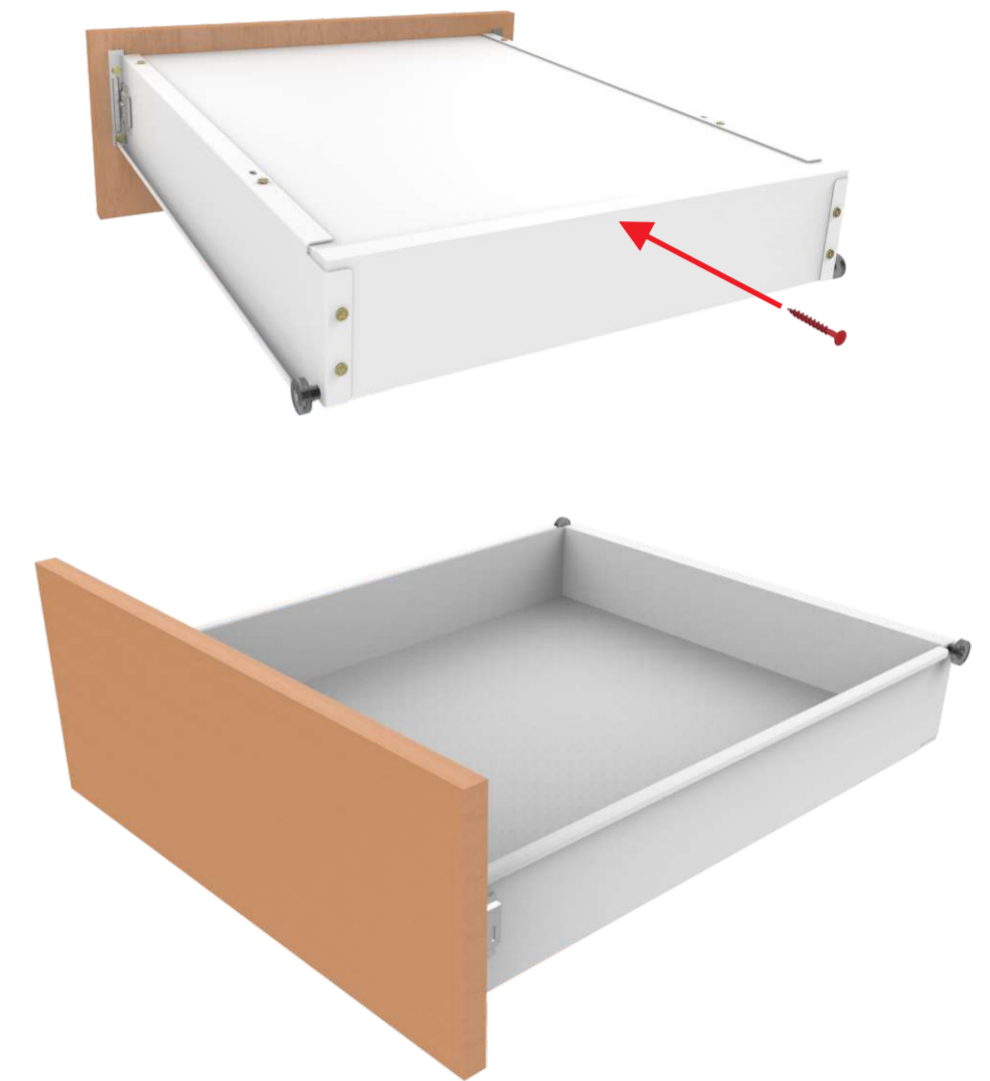
STEP 16

Place parts **DRAWER BASE** and **DRAWER BACK** into the **METABOX DRAWER 85mm**. Use 8 **EURO SCREW 6 X 10** to fasten the panels into place.



STEP 17

Finally screw in the **SQUARE HEAD WOOD SCREW 6 X 30** into the base of panel **DRAWER BACK** going into panel **DRAWER BASE**.



ITEM NO:	DRAWING NUMBER:	DESCRIPTION:	MATERIAL:	QTY:
1	N/A	EURO SCREW 6 X 10	N/A	12
2	N/A	SQUARE HEAD WOOD SCREW 6mm X 30mm	N/A	1
3	N/A	METABOX DRAWER SET 85mm	N/A	1
4	(GWB-019-002-008)	DRAWER FRONT	16mm MELAMINE	1
5	(GWB-019-002-009)	DRAWER BASE	16mm MELAMINE	1
6	(GWB-019-002-010)	DRAWER BACK	16mm MELAMINE	1

REVISION	
CODE: GWB-019-002	TITLE: DRAWER SUB ASS
METRIC ALL DIMENSIONS ARE IN mm	PART NUMBER: (GWB-003-002-011) SUB ASS
	SCALE : 1:8 (UOS)
	NAME
	DATE
	ENGINEERED BY: KOSTA KOUMENTAKOS
	DATE
	DRAWN BY: KOSTA KOUMENTAKOS
	DATE
	APPROVED BY: ANASTASIOS ASTERIOU
	DATE



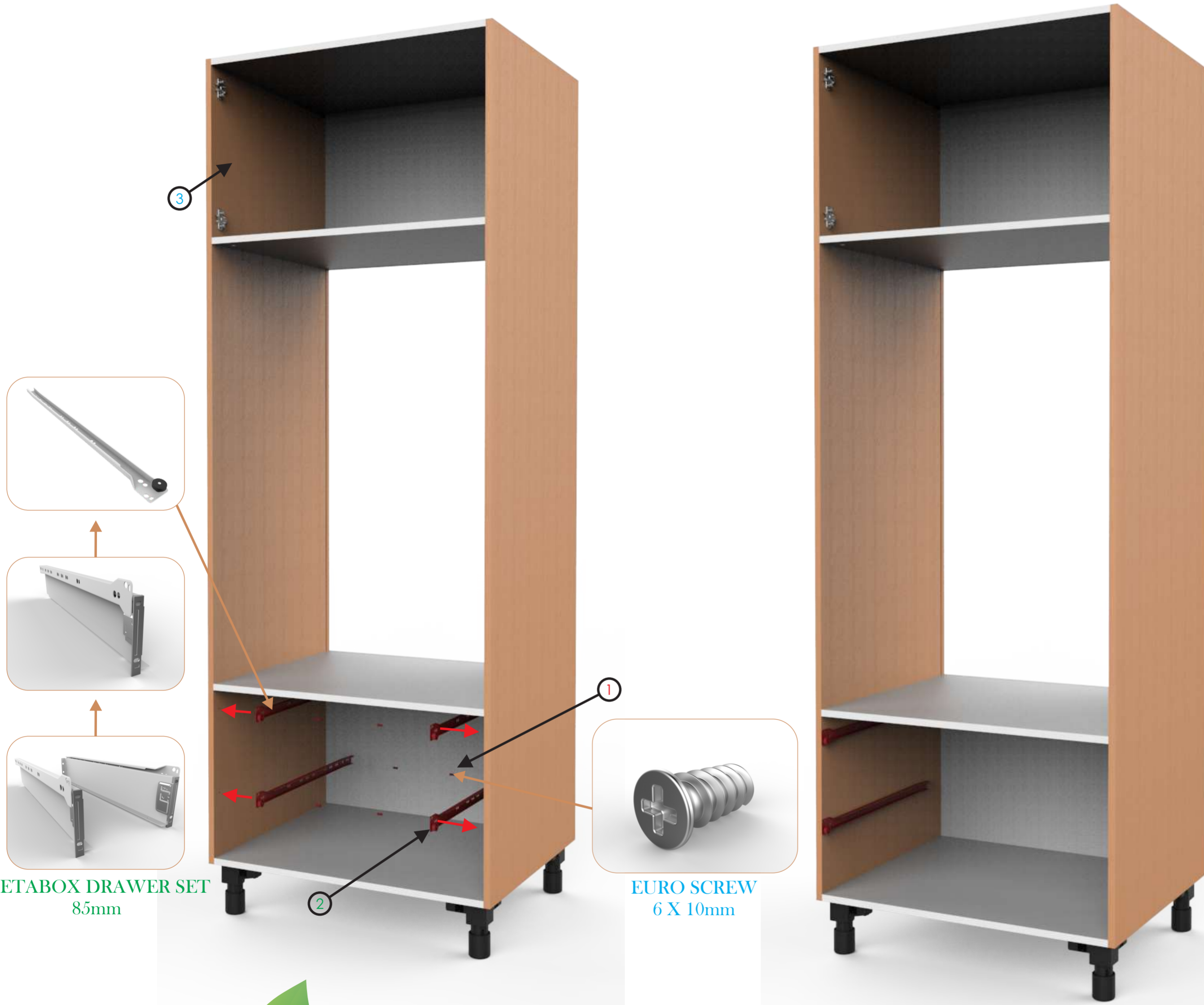
Designed By:
KSTENE
INDUSTRIAL DESIGN & ENGINEERING
INNOVATION INGENUITY INSPIRATION

* RESEMBLES CRITICAL DIMENSIONS
RESEMBLES ECR CHANGES



STEP 18

Screw parts **SDT HINGE BASE PLATE 110 DEGREES SUB ASS** into the unit as shown below:



METABOX DRAWER SET
85mm

EURO SCREW
6 X 10mm

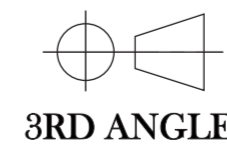
ITEM NO:	DRAWING NUMBER:	DESCRIPTION:	MATERIAL:	QTY:
1	N/A	EURO SCREW 6 X 10	N/A	8
2	N/A	METABOX DRAWER SET 85mm	N/A	2
3	(GWB-019-002-010) SUB ASS	DOOR + HINGE BRIDGE SUB ASS	N/A	1

REVISION		
CODE: GWB-019-002	TITLE: HINGE BASE PLATE SUB ASS	
	PART NUMBER: (GWB-019-002-009)SUB ASS	SCALE : 1:8 (UOS)
METRIC ALL DIMENSIONS ARE IN mm	NAME	DATE
	ENGINEERED BY: KOSTA KOUMENTAKOS	07-09-2016
	DRAWN BY: KOSTA KOUMENTAKOS	07-09-2016
	APPROVED BY: ANASTASIOS ASTERIOU	07-09-2016



Designed By:
KSTENE
INDUSTRIAL DESIGN & ENGINEERING
INNOVATION INGENUITY INSPIRATION

* RESEMBLES CRITICAL DIMENSIONS
RESEMBLES ECR CHANGES



STEP 19

Take the **DRAWER** sub assemblies and now fit them into assembly **HINGE BASE PLATE + METABOX RAIL** as seen below:



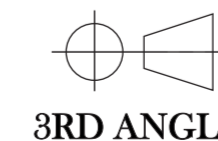
ITEM NO:	DRAWING NUMBER:	DESCRIPTION:	MATERIAL:	QTY:
1	(GWB-019-002-011) SUB ASS	DRAWER	N/A	2
2	(GWB-019-002-012) SUB ASS	HINGE BASE PLATE + METABOX RAIL	N/A	1

REVISION	
CODE: GWB-019-002	TITLE: DRAWER + BODY
METRIC ALL DIMENSIONS ARE IN mm	PART NUMBER: (GWB-003-002-013) GA ASS SCALE : 1:8 (UOS)
	NAME
	ENGINEERED BY: KOSTA KOUMENTAKOS DATE: 07-09-2016
	DRAWN BY: KOSTA KOUMENTAKOS DATE: 07-09-2016
	APPROVED BY: ANASTASIOS ASTERIOU DATE: 07-09-2016



Designed By:
KSTENE
INDUSTRIAL DESIGN & ENGINEERING
INNOVATION INGENUITY INSPIRATION

* RESEMBLES CRITICAL DIMENSIONS
RESEMBLES ECR CHANGES



ECR: N/A DATE: 24-02-2016

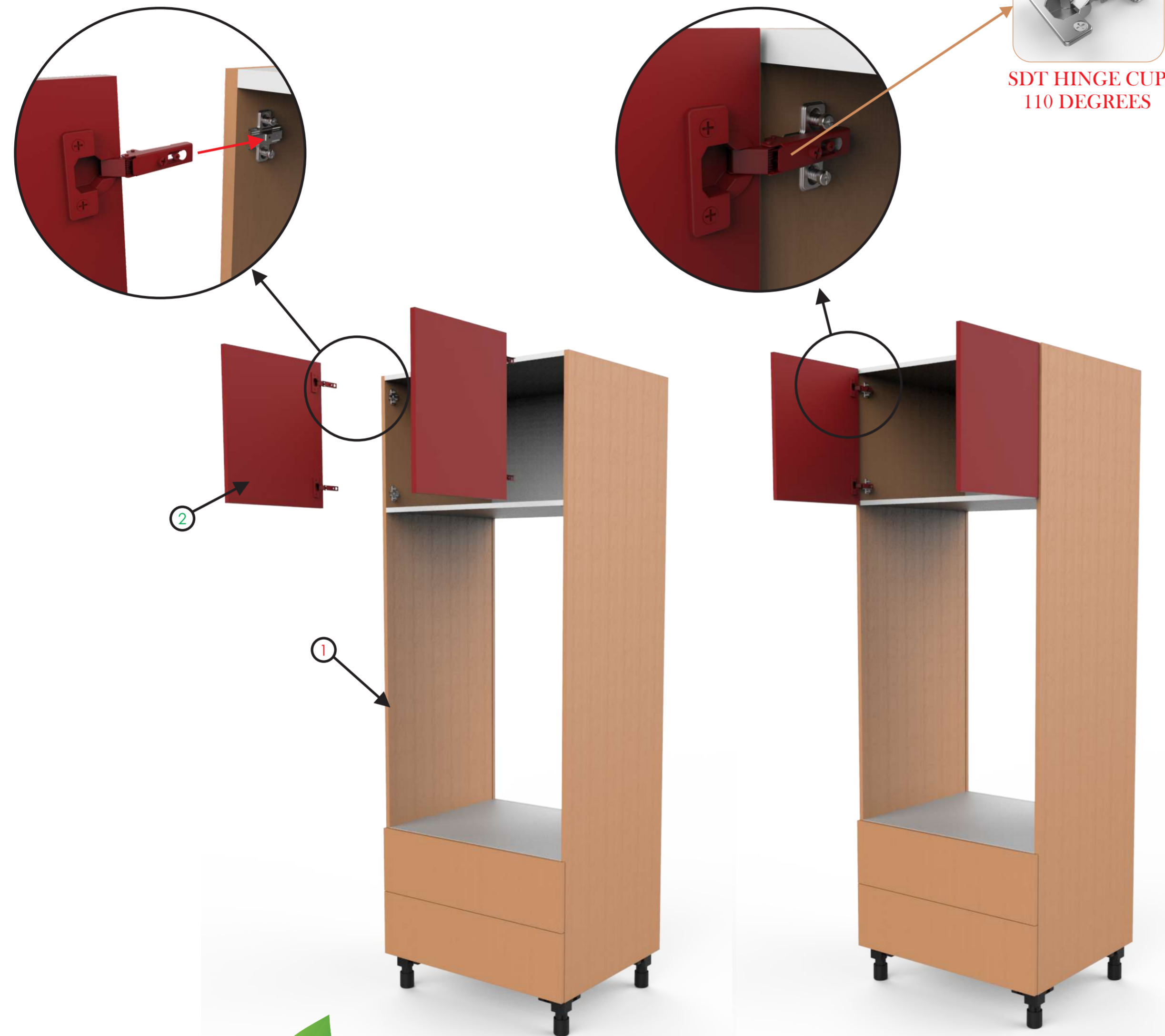
LEVEL: 1

© ALL COPYRIGHTS BELONG TO OIKO, DATE 07-09-2016

PAGE: 13 OF 15

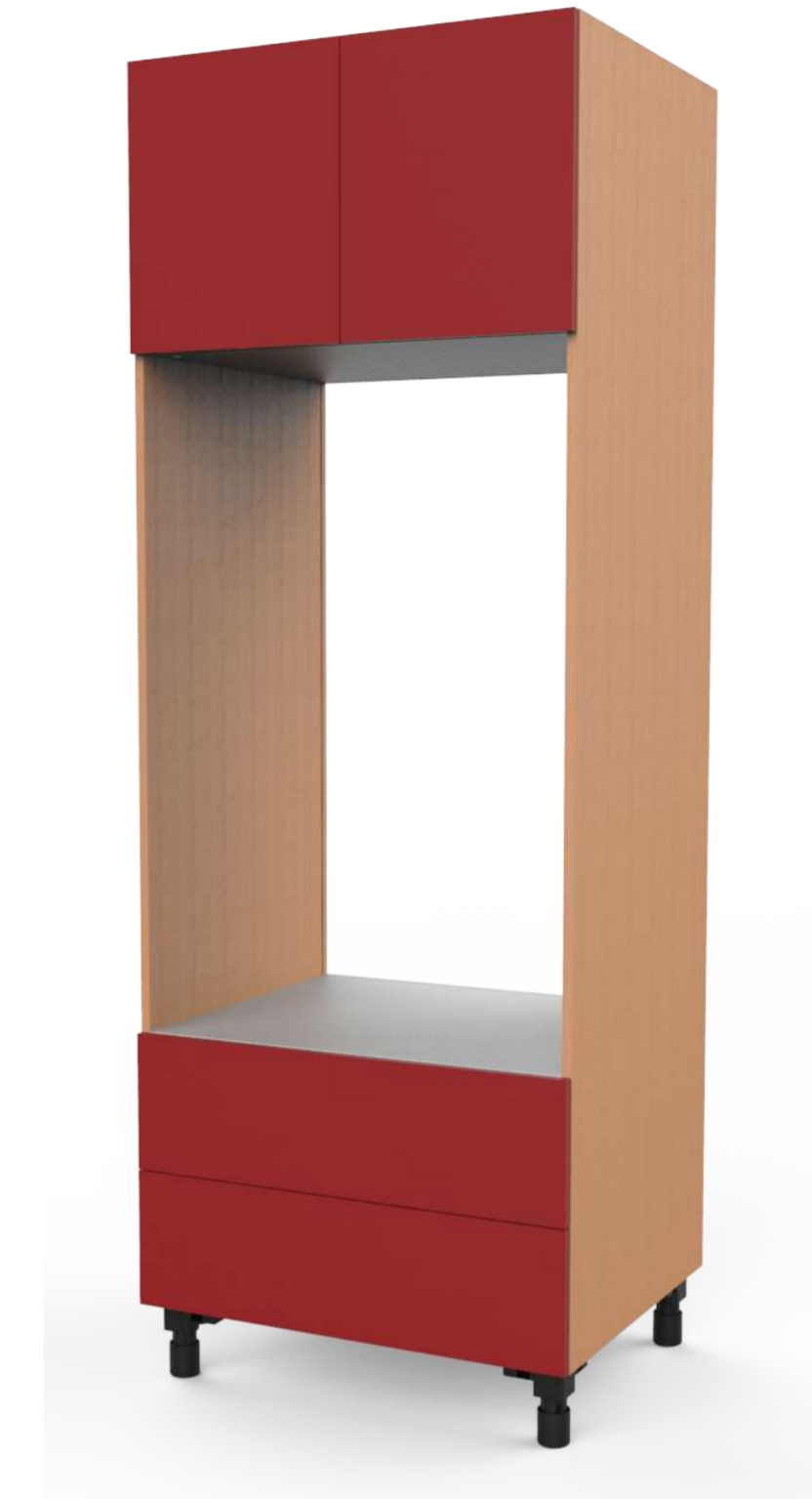
STEP 20

Attach sub assembly **DOOR + HINGE BRIDGE SUB ASS** to sub assembly **HINGE BASE PLATE SUB ASS**. This is done by clipping the 2 halves of the hinge together.



STEP 21

Align the door to the body by adjusting the screws on the hinge.



ITEM NO:	DRAWING NUMBER:	DESCRIPTION:	MATERIAL:	QTY:
1	(GWB-019-002-009) SUB ASS	HINGE BASE PLATE SUB ASS	N/A	1
2	(GWB-019-002-010) SUB ASS	DOOR + HINGE BRIDGE SUB ASS	N/A	2

REVISION		
CODE: GWB-019-002	TITLE: DOOR + BODY SUB ASS	
	PART NUMBER: (GWB-019-002-011) SUB ASS	SCALE : 1:8 (UOS)
METRIC ALL DIMENSIONS ARE IN mm	NAME	
	ENGINEERED BY: KOSTA KOUMENTAKOS	DATE 07-09-2016
	DRAWN BY: KOSTA KOUMENTAKOS	DATE 07-09-2016
3RD ANGLE	APPROVED BY: ANASTASIOS ASTERIOU	
	DATE 07-09-2016	



Designed By:
KSTENE
INDUSTRIAL DESIGN & ENGINEERING
INNOVATION INGENUITY INSPIRATION

* RESEMBLES CRITICAL DIMENSIONS
RESEMBLES ECR CHANGES

ECR: N/A DATE: 24-02-2016

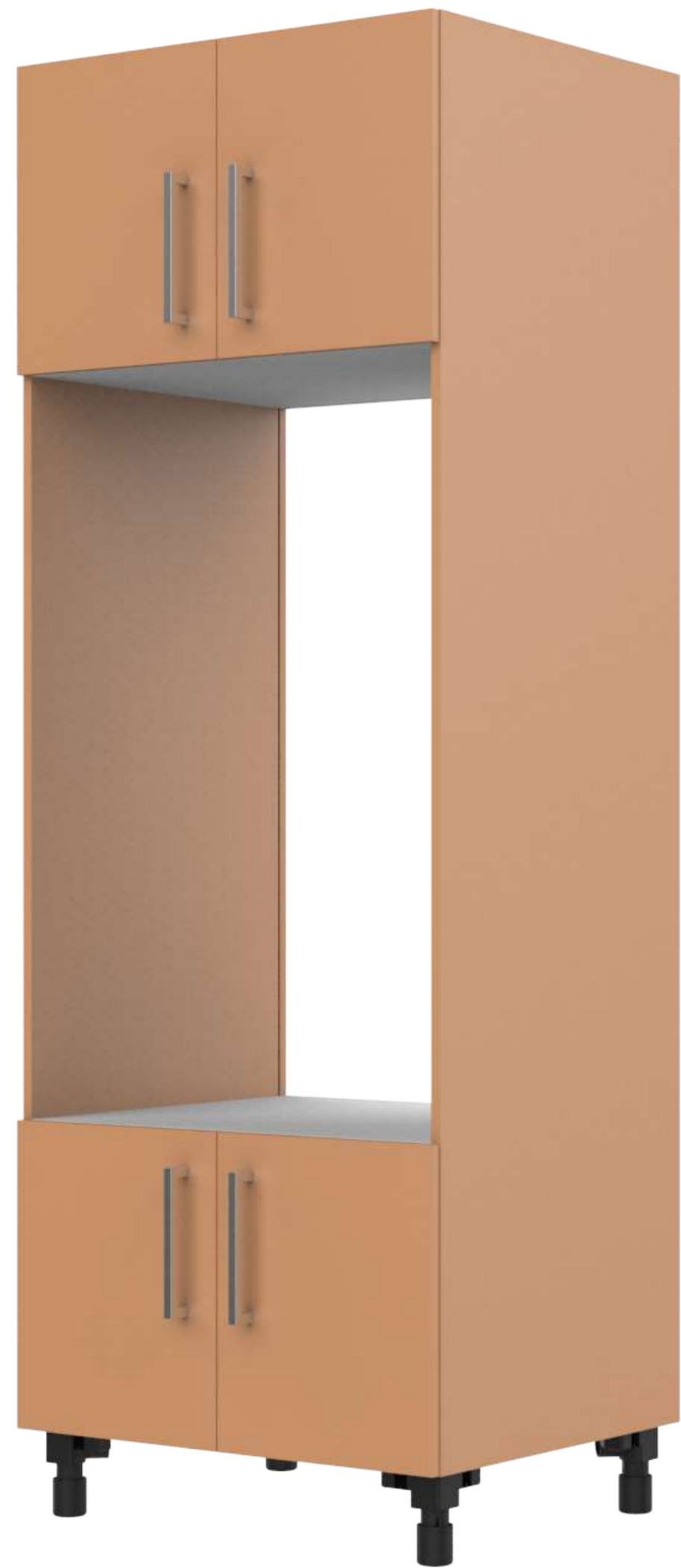
LEVEL: 1

© ALL COPYRIGHTS BELONG TO OIKO, DATE 07-09-2016

PAGE: 14 OF 15

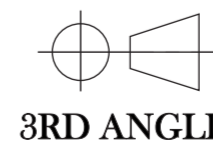
STEP 22

Your unit is now complete.
Finish it off by adding a
handle of your choice.



Designed By:
KSTENE
INDUSTRIAL DESIGN & ENGINEERING
INNOVATION INGENUITY INSPIRATION

* RESEMBLES CRITICAL DIMENSIONS
RESEMBLES ECR CHANGES



3RD ANGLE

REVISION				
CODE: GWB-019-002	TITLE: GA ASS			
	PART NUMBER: (GWB-019-002) GA ASS	SCALE : 1:8 (UOS)		
METRIC ALL DIMENSIONS ARE IN mm	NAME			
	ENGINEERED BY: KOSTA KOUMENTAKOS	DATE 07-09-2016		
	DRAWN BY: KOSTA KOUMENTAKOS	DATE 07-09-2016		
	APPROVED BY: ANASTASIOS ASTERIOU	DATE 07-09-2016		
ECR: N/A	DATE: 24-02-2016	LEVEL: 1	© ALL COPYRIGHTS BELONG TO OIKO, DATE 07-09-2016	PAGE: 15 OF 15