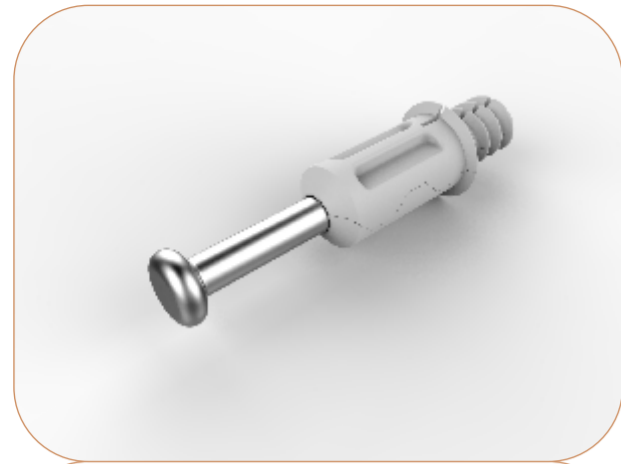


DIY 1 Door Unit



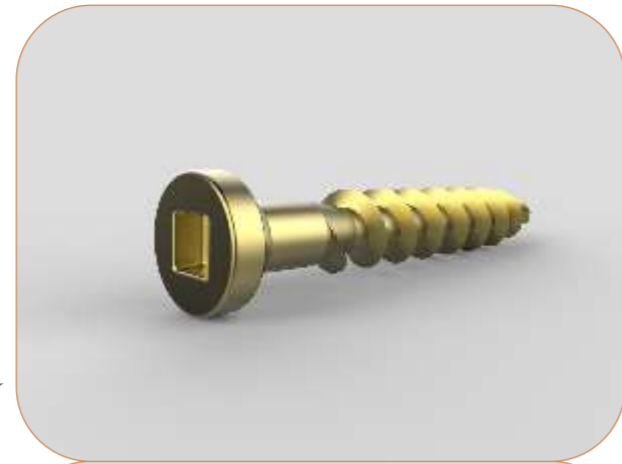
Code: (GWB-007-001)

STANDARD COMPONENTS INDEX



= X12

INDAUX EXPANDA PIN
34mm X 5mm



= X16

SQUARE HEAD WOOD
SCREW 6mm X 16mm



= X12

INDAUX CAM - 15mm



= X2

SQUARE HEAD WOOD
SCREW 6mm X 30mm



= X24

BIRCH DOWEL
8mm X 30mm



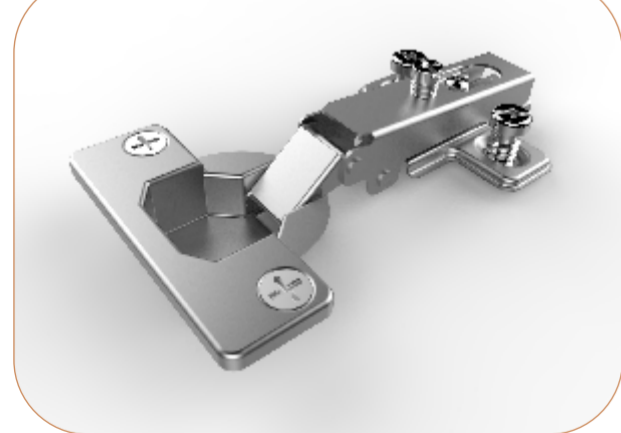
= X4

SHELF SUPPORT



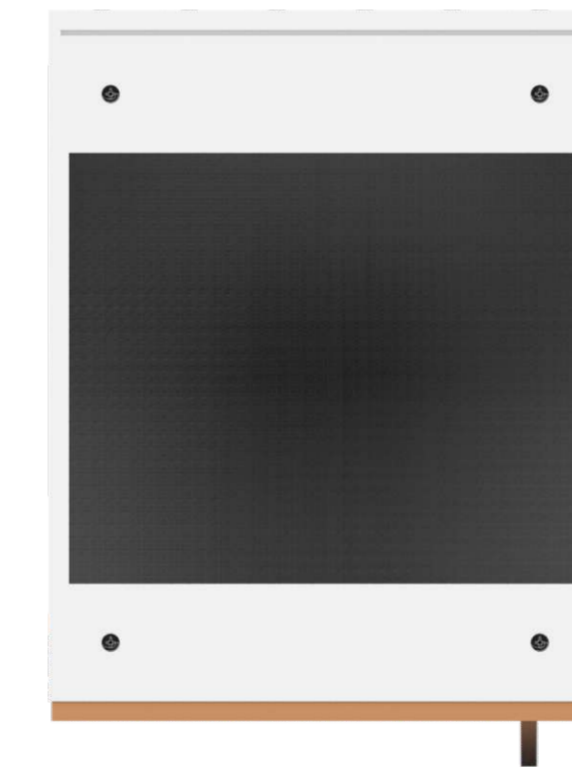
= X4

INDAUX MAMUL - 140mm



= X2

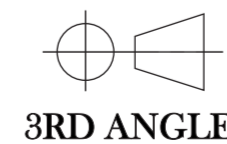
SDT HINGE CUP
110 DEGREES



Designed By:
KSTENE
INDUSTRIAL DESIGN & ENGINEERING
INNOVATION INGENUITY INSPIRATION

* RESEMBLES CRITICAL DIMENSIONS
RESEMBLES ECR CHANGES

METRIC
ALL DIMENSIONS
ARE IN
mm



3RD ANGLE

ECR: N/A DATE: 24-02-2016

LEVEL: 1

© ALL COPYRIGHTS BELONG TO OIKO, DATE 01-06-2016

REVISION

CODE: GWB-007-001	TITLE: STANDARD COMPONENTS INDEX	
	PART NUMBER: (GWB-007-001)	SCALE : 1:8 (UOS)
METRIC ALL DIMENSIONS ARE IN mm	NAME	DATE
	ENGINEERED BY: KOSTA KOUMENTAKOS	01-06-2016
	DRAWN BY: KOSTA KOUMENTAKOS	01-06-2016
	APPROVED BY: ANASTASIOS ASTERIOU	01-06-2016
		PAGE: 1 OF 12

STEP 1

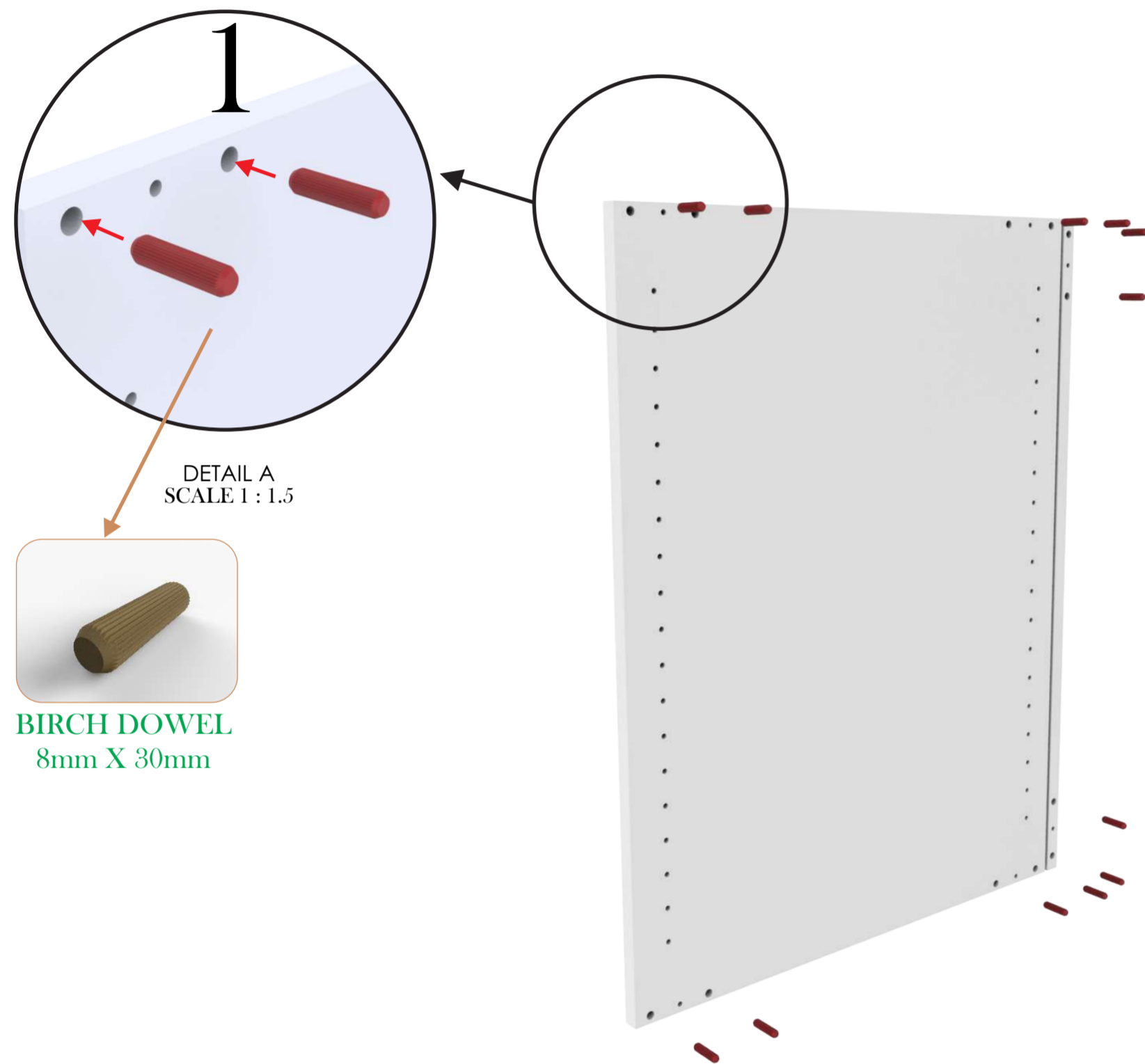
Place part **BIRCH DOWELS** into part **LEFT SIDE PANEL**, use the pre-drilled holes as shown in the pictures below:

NOTE:

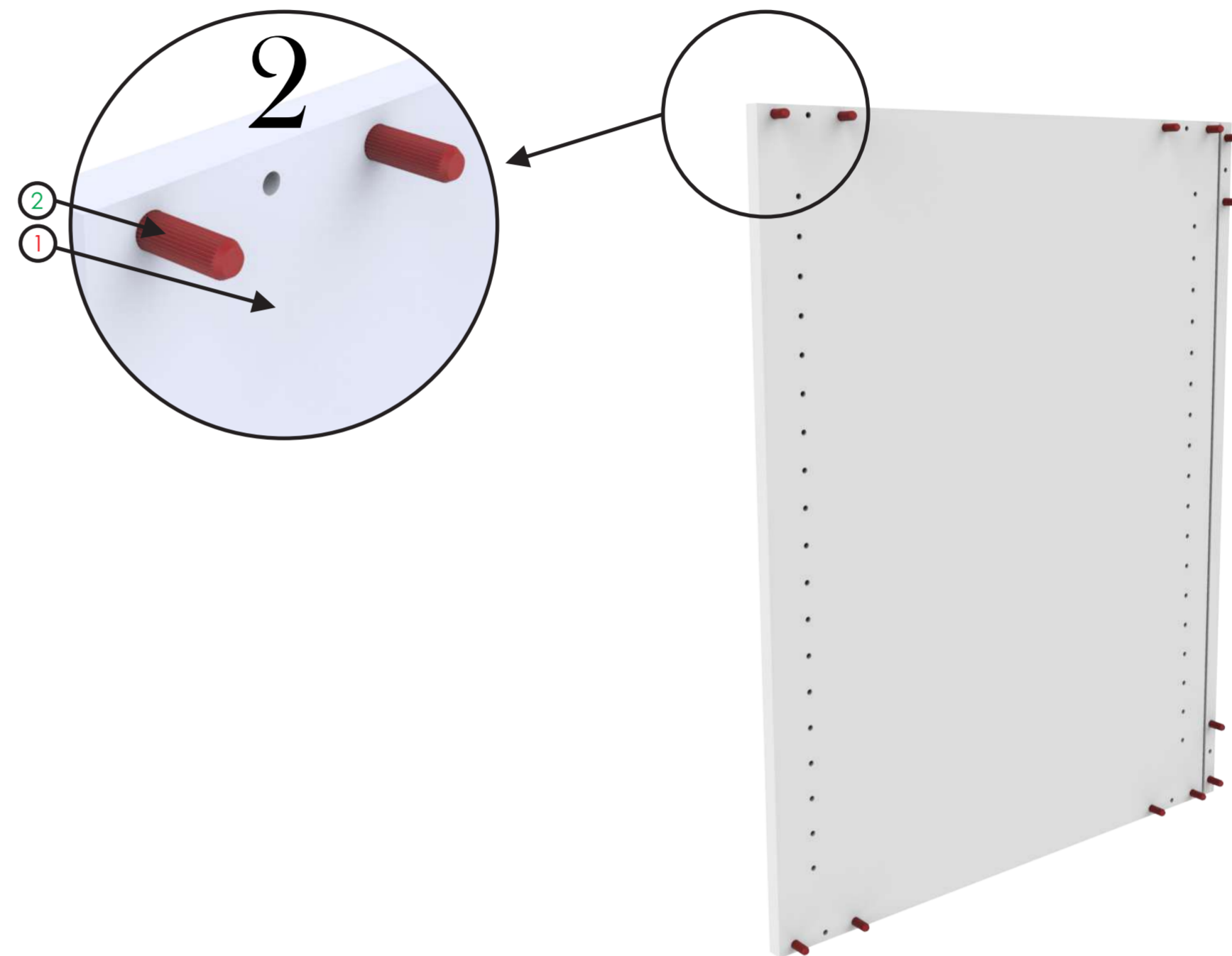
As done in STEP 1, place part **BIRCH DOWELS** into part **LEFT SIDE PANEL**, use the pre-drilled holes as shown in the pictures below:

WARNING:

Do not hit the **BIRCH DOWELS** into place as they could damage the exterior of the **SIDE PANELS**.



BIRCH DOWEL
8mm X 30mm



ITEM NO:	DRAWING NUMBER:	DESCRIPTION:	MATERIAL:	QTY:
1	(GWB-007-001-002)	LEFT SIDE PANEL	16mm MELAMINE	1
2	N/A	BIRCH DOWEL - 8mm x 30mm	N/A	16

REVISION	
CODE: GWB-007-001	TITLE: LEFT AND RIGHT PANEL + DOWELS SUB ASS
METRIC ALL DIMENSIONS ARE IN mm	PART NUMBER: (GWB-007-001-002) SCALE : 1:8 (UOS)
	NAME DATE
	ENGINEERED BY: KOSTA KOUMENTAKOS 01-06-2016
	DRAWN BY: KOSTA KOUMENTAKOS 01-06-2016
	APPROVED BY: ANASTASIOS ASTERIOU 01-06-2016



Designed By:
KSTENE
INDUSTRIAL DESIGN & ENGINEERING
INNOVATION INGENUITY INSPIRATION

* RESEMBLES CRITICAL DIMENSIONS
RESEMBLES ECR CHANGES



ECR: N/A DATE: 24-02-2016

LEVEL: 1

© ALL COPYRIGHTS BELONG TO OIKO, DATE 01-06-2016

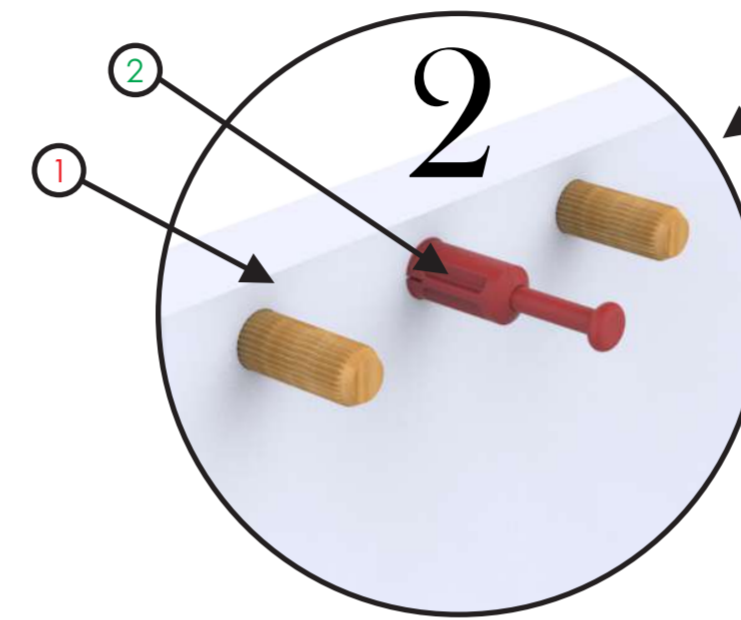
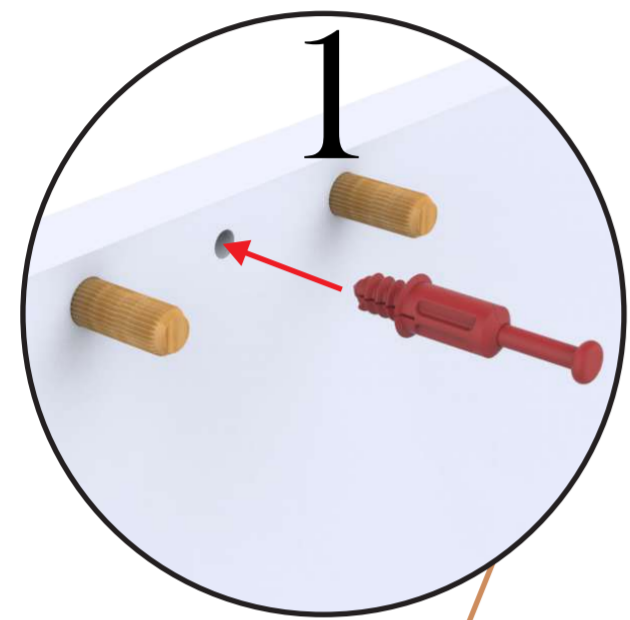
PAGE: 2 OF 12

STEP 2

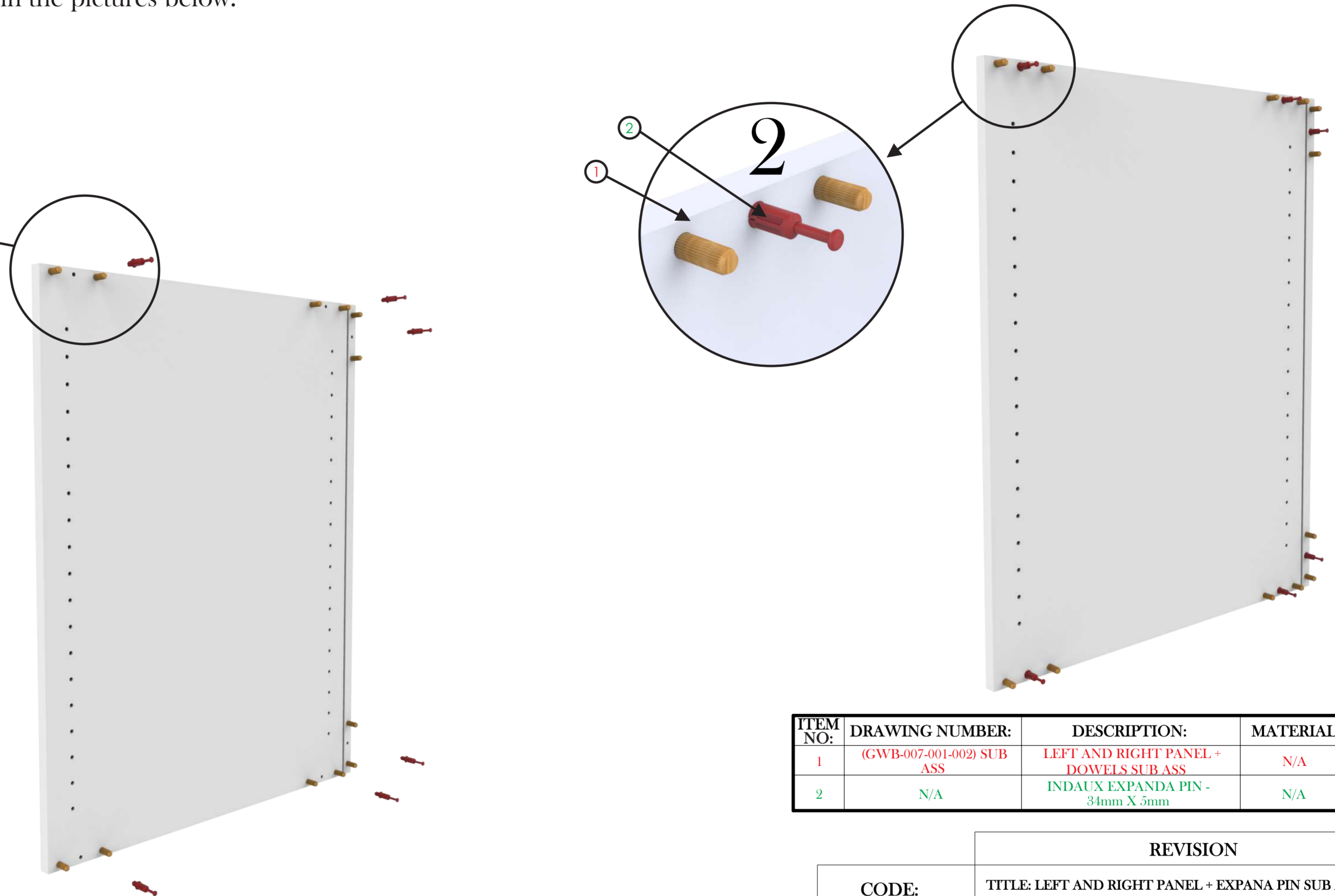
Place part **INDAUX EXPANDA PIN** into part **LEFT AND RIGHT SIDE PANEL + DOWELS SUB ASS**, use the pre-drilled holes as shown in the pictures below:

NOTE:

You should have 2 sub assemblies like this.



INDAUX EXPANDA PIN
34mm X 5mm



ITEM NO:	DRAWING NUMBER:	DESCRIPTION:	MATERIAL:	QTY:
1	(GWB-007-001-002) SUB ASS	LEFT AND RIGHT PANEL + DOWELS SUB ASS	N/A	8
2	N/A	INDAUX EXPANDA PIN - 34mm X 5mm	N/A	1

REVISION	
CODE: GWB-007-001	TITLE: LEFT AND RIGHT PANEL + EXPANA PIN SUB ASS
METRIC ALL DIMENSIONS ARE IN mm	PART NUMBER: (GWB-007-001-003) SCALE : 1:8 (UOS)
	NAME DATE
	ENGINEERED BY: KOSTA KOUMENTAKOS 01-06-2016
	DRAWN BY: KOSTA KOUMENTAKOS 01-06-2016
	APPROVED BY: ANASTASIOS ASTERIOU 01-06-2016



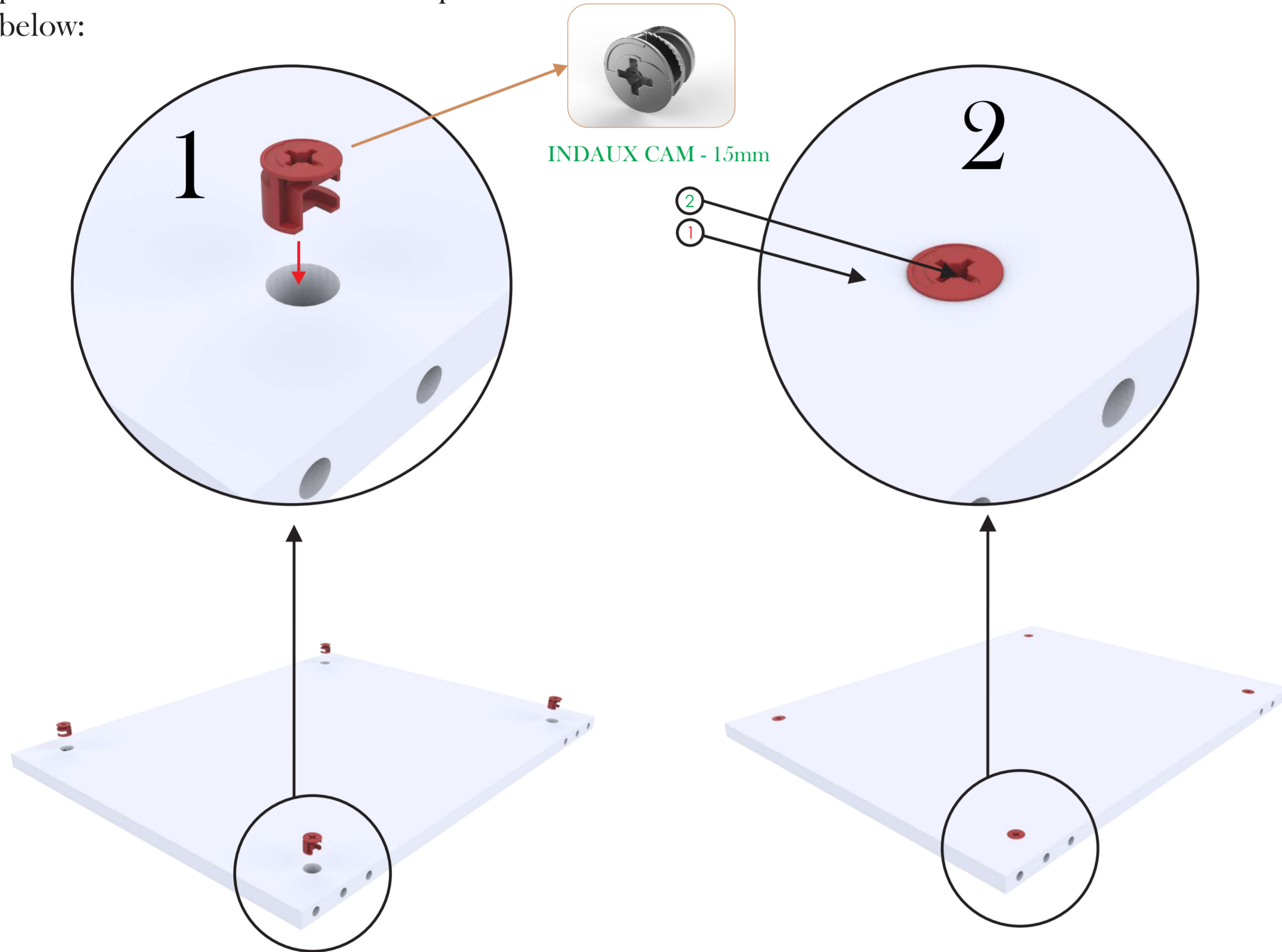
Designed By:
KSTENE
INDUSTRIAL DESIGN & ENGINEERING
INNOVATION INGENUITY INSPIRATION

* RESEMBLES CRITICAL DIMENSIONS
RESEMBLES ECR CHANGES



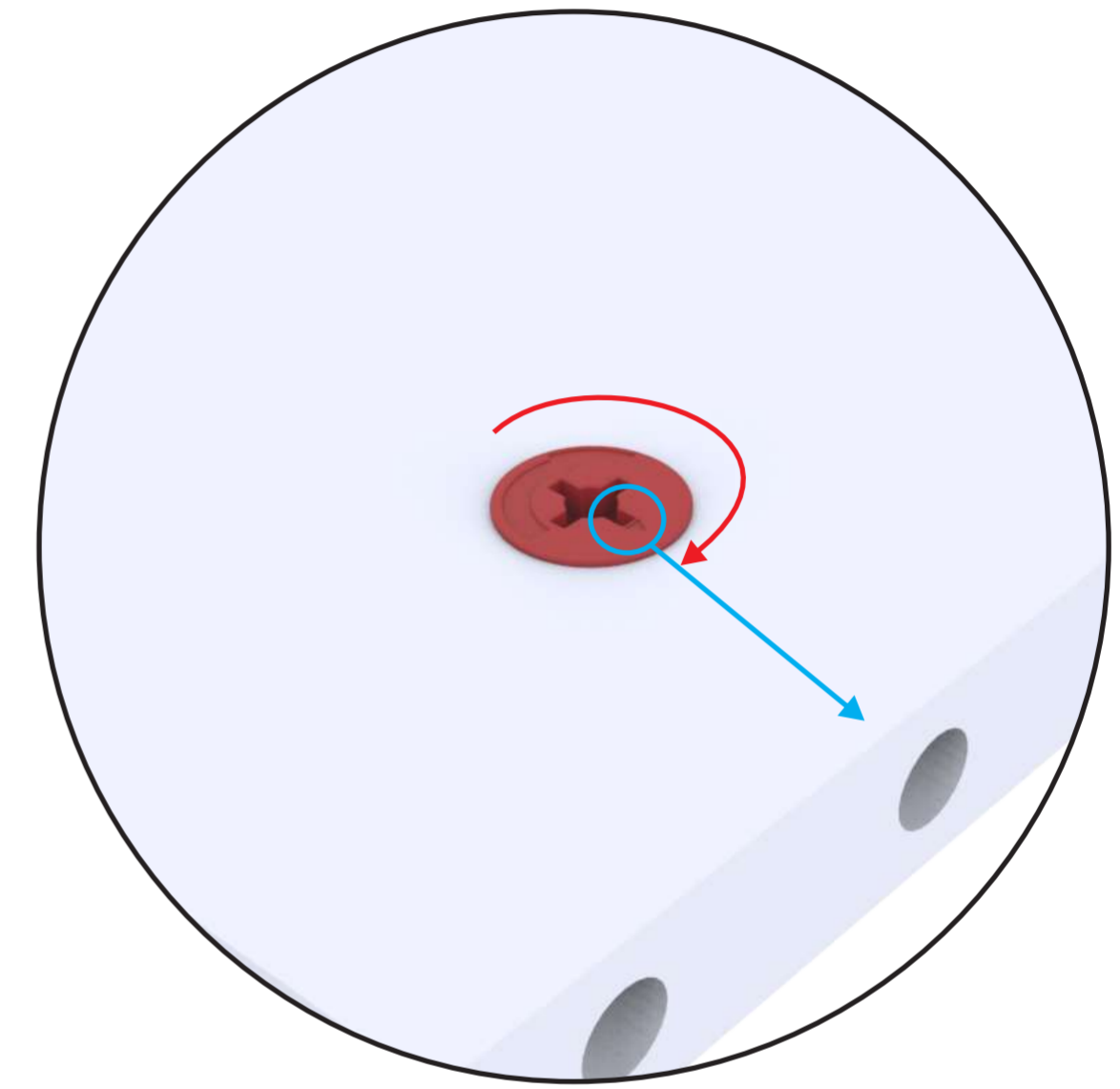
STEP 3

Place part **INDAUX CAM** into part **TOP AND BOTTOM PANEL**, use the pre-drilled holes as shown in the pictures below:



STEP 4

Turn part **INDAUX CAM** so that the arrow faces the edge of the board where the **INDAUX EXPANDA PIN** hole has been drilled. See below:



ITEM NO:	DRAWING NUMBER:	DESCRIPTION:	MATERIAL:	QTY:
1	(GWB-007-001-004)	TOP & BOTTOM PANEL	16mm MELAMINE	1
2	N/A	INDAUX CAM - 15mm	N/A	4



Designed By:
KSTENE
INDUSTRIAL DESIGN & ENGINEERING
INNOVATION INGENUITY INSPIRATION

* RESEMBLES CRITICAL DIMENSIONS
RESEMBLES ECR CHANGES



3RD ANGLE

REVISION	
TITLE: TOP AND BOTTOM PANEL + CAM SUB ASS	
PART NUMBER: (GWB-007-001-004)	SCALE : 1:8 (UOS)
NAME	DATE
ENGINEERED BY: KOSTA KOUMENTAKOS	01-06-2016
DRAWN BY: KOSTA KOUMENTAKOS	01-06-2016
APPROVED BY: ANASTASIOS ASTERIOU	01-06-2016

ECR: N/A DATE: 24-02-2016

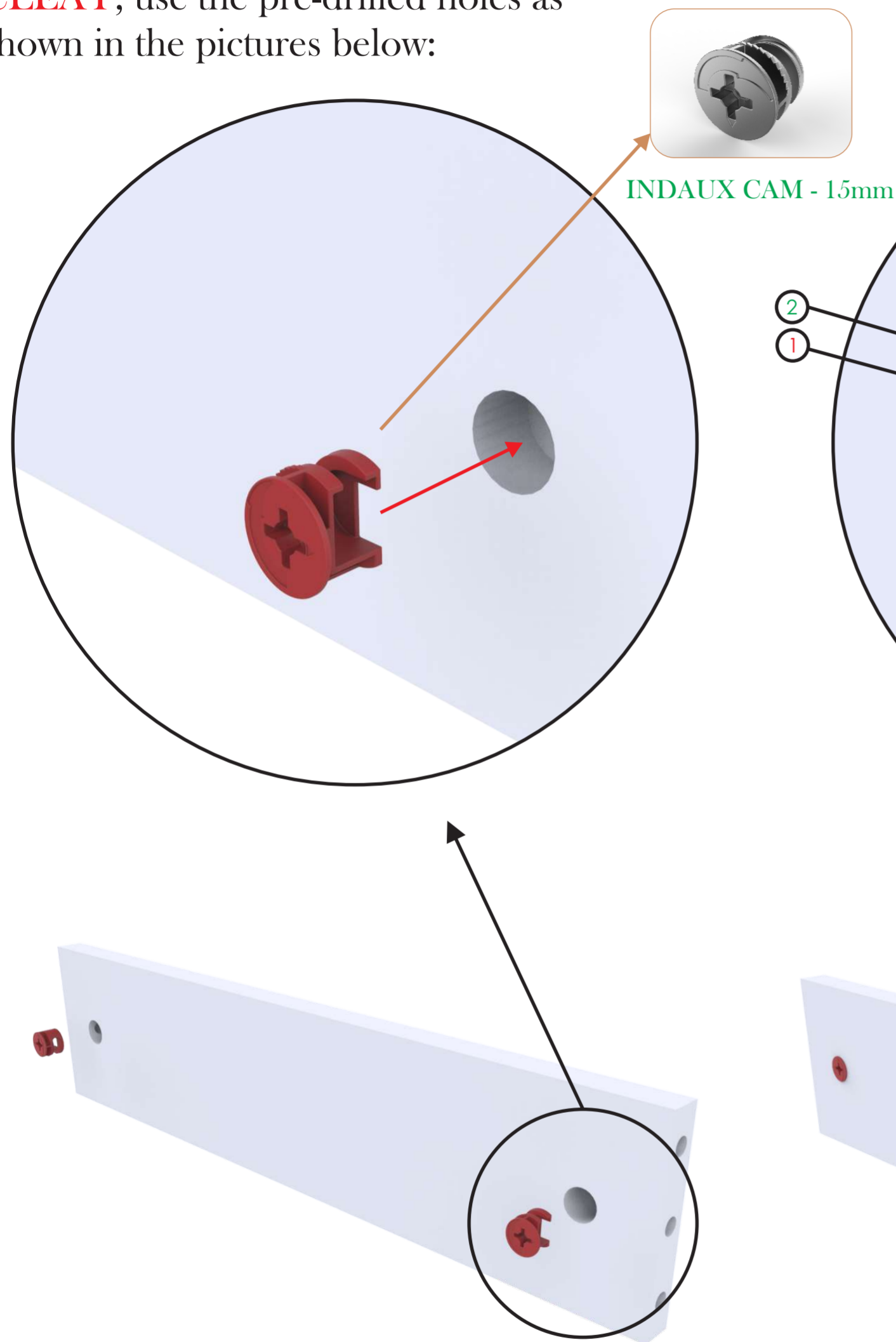
LEVEL: 1

© ALL COPYRIGHTS BELONG TO OIKO, DATE 01-06-2016

PAGE: 4 OF 12

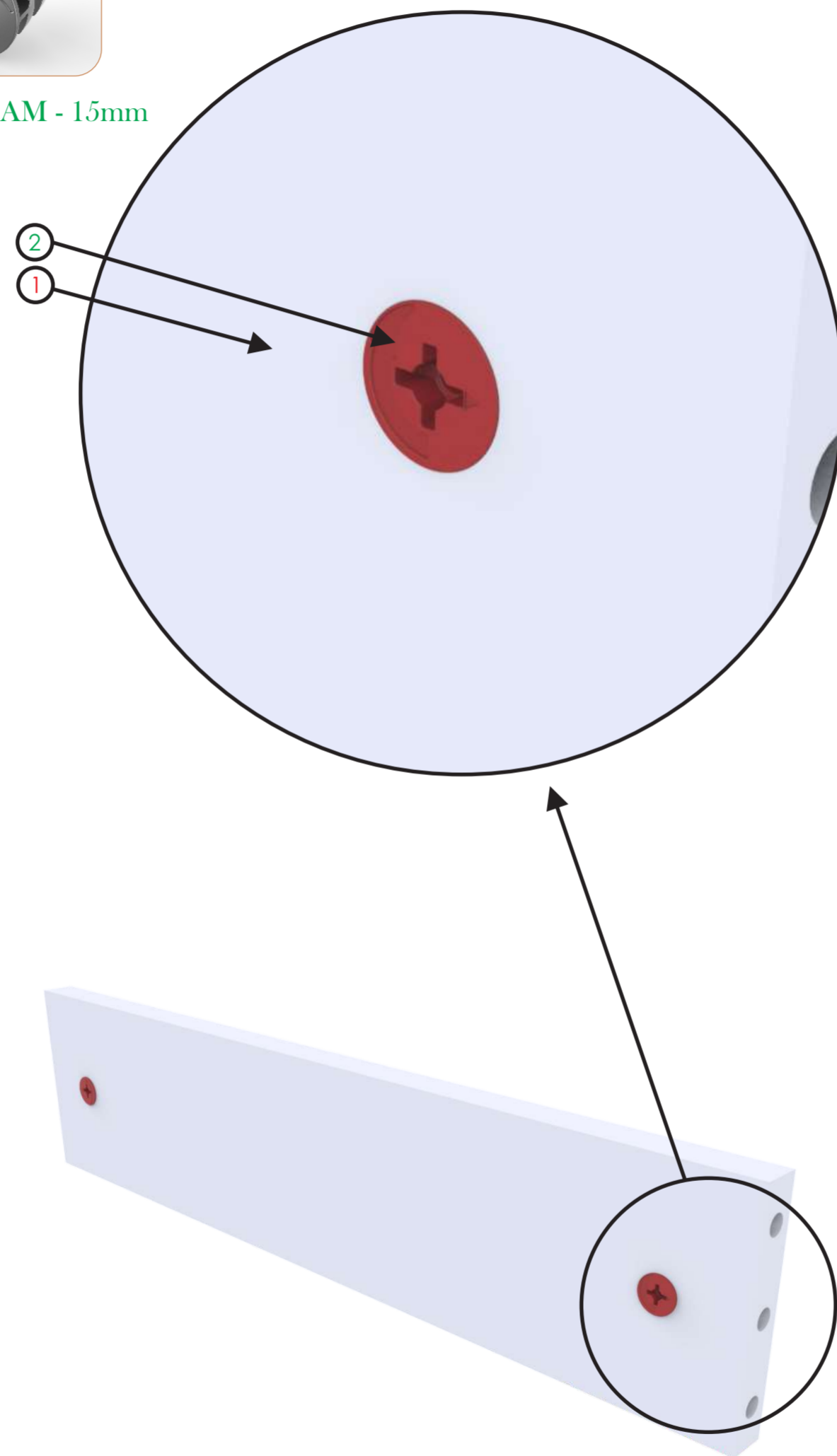
STEP 5

Place part **INDAUX CAM** into part **CLEAT**, use the pre-drilled holes as shown in the pictures below:



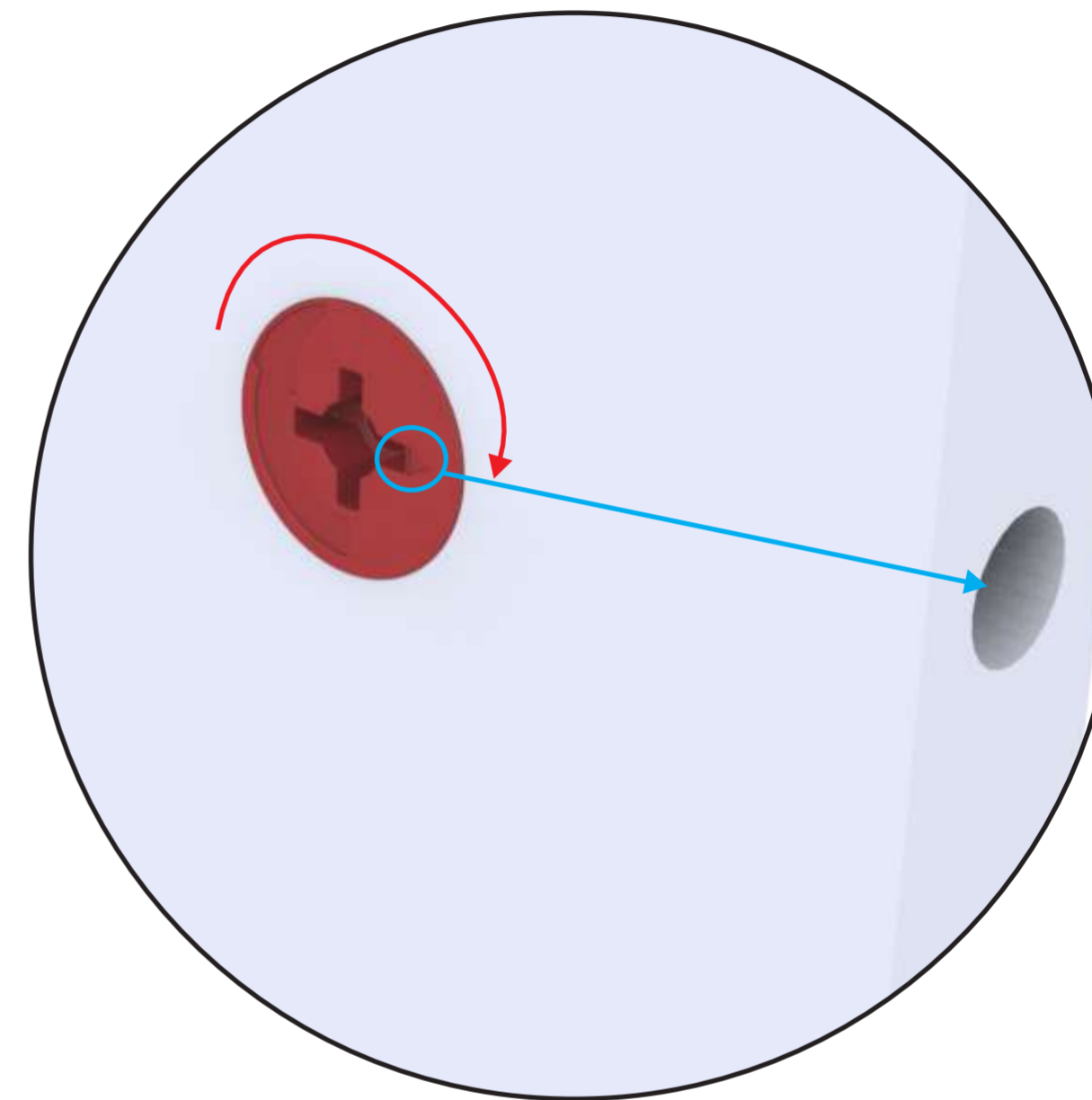
NOTE:

You should have 4 sub assemblies like this.



STEP 6

Turn part **INDAUX CAM** so that the arrow faces the edge of the board where the **INDAUX EXPANDA PIN** hole has been drilled. See below:



ITEM NO:	DRAWING NUMBER:	DESCRIPTION:	MATERIAL:	QTY:
1	(GWB-007-001-006)	CLEAT	16mm MELAMINE	1
2	N/A	INDAUX CAM - 15mm	N/A	2

REVISION		
CODE: GWB-007-001	TITLE: CLEAT + CAM SUB ASS	
	PART NUMBER: (GWB-007-001-005) SUB ASS	SCALE : 1:8 (UOS)
METRIC ALL DIMENSIONS ARE IN mm	NAME	DATE
	ENGINEERED BY: KOSTA KOUMENTAKOS	01-06-2016
	DRAWN BY: KOSTA KOUMENTAKOS	01-06-2016
3RD ANGLE	APPROVED BY: ANASTASIOS ASTERIOU	01-06-2016



Designed By:
KSTENE
INDUSTRIAL DESIGN & ENGINEERING
INNOVATION INGENUITY INSPIRATION

* RESEMBLES CRITICAL DIMENSIONS
RESEMBLES ECR CHANGES

ECR: N/A DATE: 24-02-2016

LEVEL: 1

© ALL COPYRIGHTS BELONG TO OIKO, DATE 01-06-2016

PAGE: 5 OF 12

STEP 7

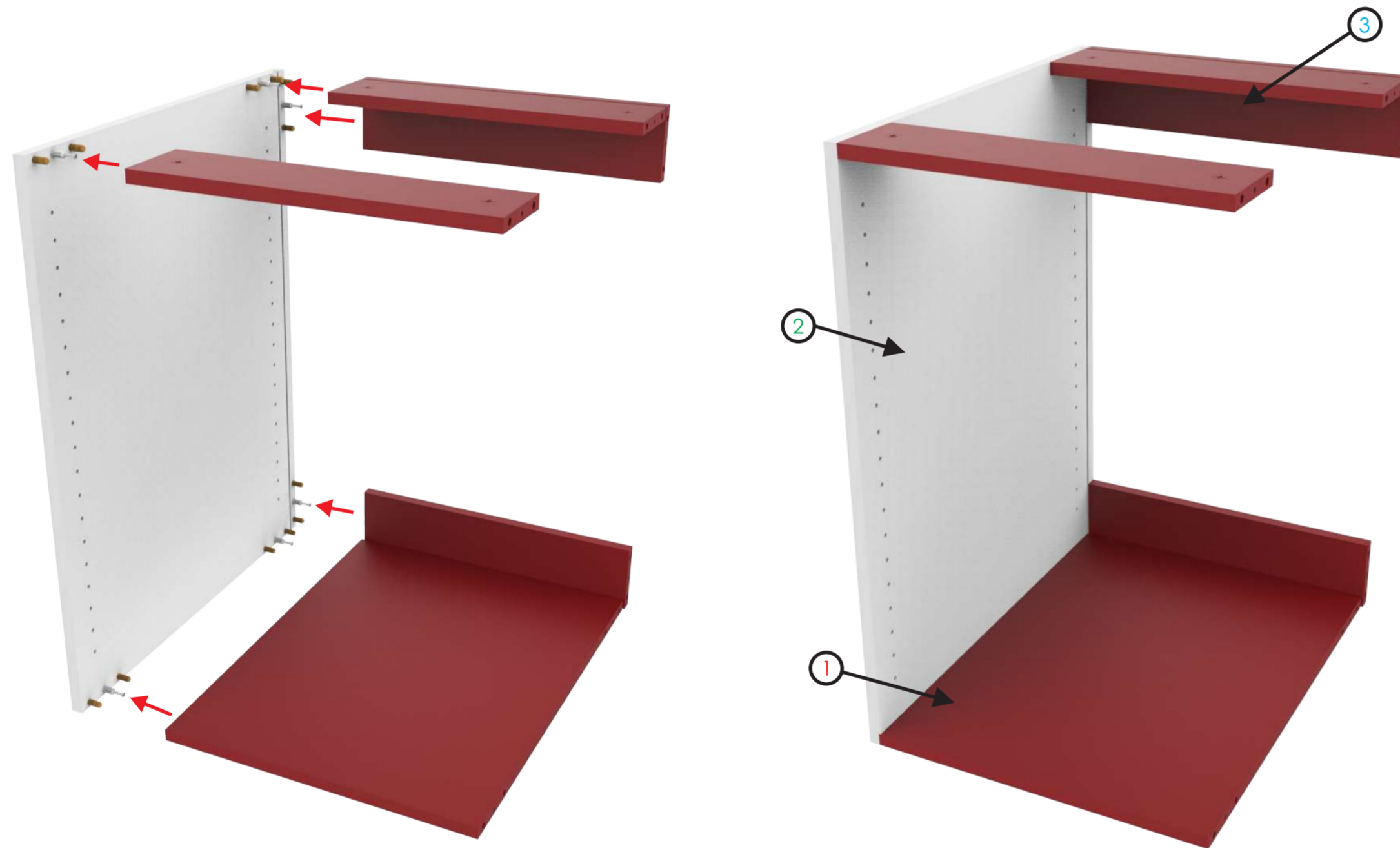
Assemble sub assemblies

CLEAT + CAM SUB ASS

TOP AND BOTTOM PANEL + CAM SUB ASS

LEFT AND RIGHT PANEL + EXPANDA PIN SUB ASS

as shown below:

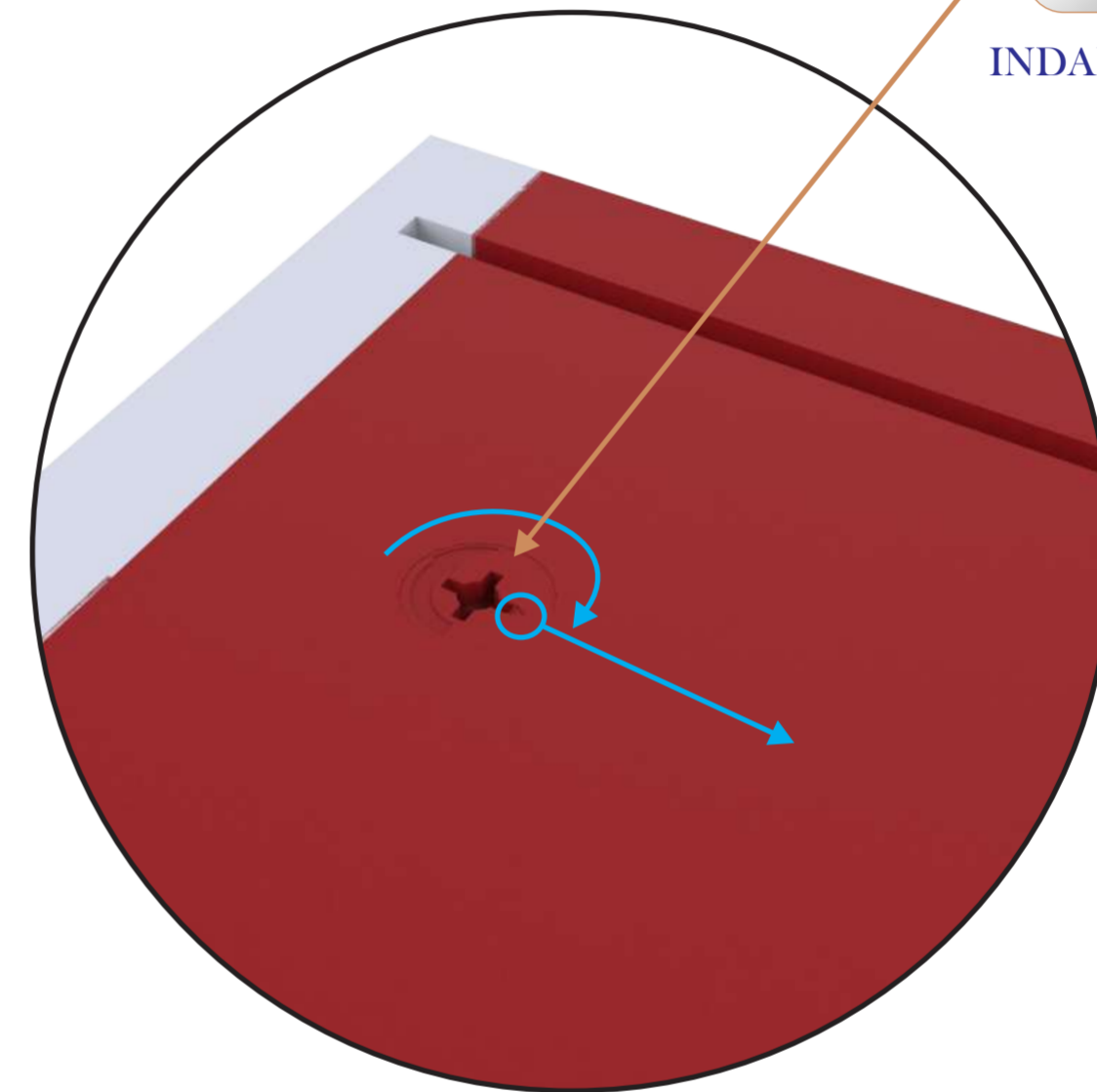


STEP 8

Now turn the **INDAUX CAM - 15mm** 180° clockwise to fasten all the panels together.



INDAUX CAM - 15mm



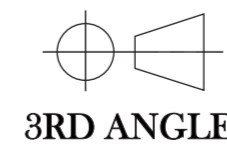
ITEM NO:	DRAWING NUMBER:	DESCRIPTION:	MATERIAL:	QTY:
1	(GWB-007-001-003) SUB ASS	LEFT AND RIGHT PANEL + EXPANDA PIN SUB ASS	N/A	1
2	(GWB-007-001-004) SUB ASS	TOP AND BOTTOM PANEL + CAM SUB ASS	N/A	2
3	(GWB-007-001-005) SUB ASS	CLEAT + CAM SUB ASS	N/A	4

REVISION	
CODE: GWB-007-001	TITLE: SIDES + CLEATS + TOP AND BOTTOM PANEL SUB ASS
METRIC ALL DIMENSIONS ARE IN mm	PART NUMBER: (GWB-007-001-006) SUB ASS SCALE : 1:8 (UOS)
	NAME DATE
	ENGINEERED BY: KOSTA KOUMENTAKOS 01-06-2016
	DRAWN BY: KOSTA KOUMENTAKOS 01-06-2016
	APPROVED BY: ANASTASIOS ASTERIOU 01-06-2016



Designed By:
KSTENE
INDUSTRIAL DESIGN & ENGINEERING
INNOVATION INGENUITY INSPIRATION

* RESEMBLES CRITICAL DIMENSIONS
RESEMBLES ECR CHANGES



3RD ANGLE

ECR: N/A DATE: 24-02-2016

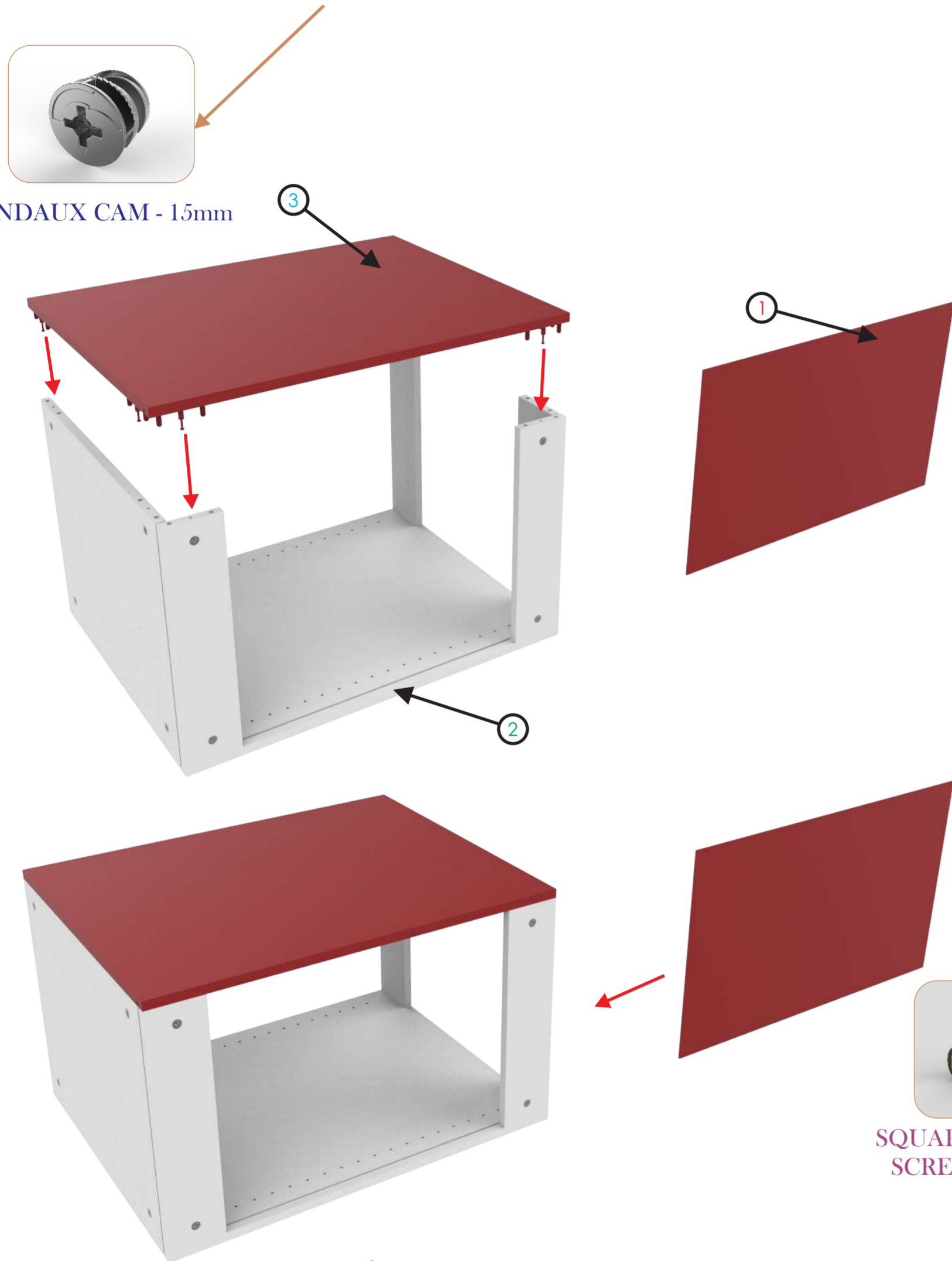
LEVEL: 1

© ALL COPYRIGHTS BELONG TO OIKO, DATE 01-06-2016

PAGE: 6 OF 12

STEP 9

Place assembly **LEFT AND RIGHT PANEL + DOWELS SUB ASS** into assembly **SIDES + CLEATS + TOP AND BOTTOM PANEL SUB ASS** but do not fasten the **INDAUX CAM**. See below:



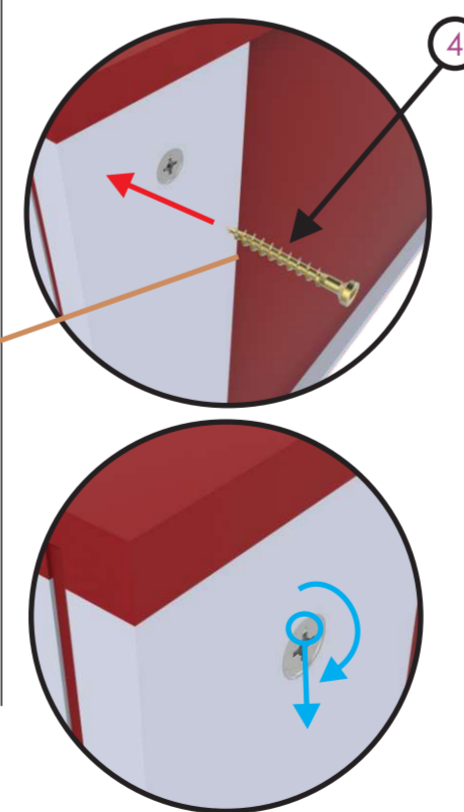
STEP 10

Slide part **BACKING** into your current assembly. Gently knock into the groove provided on the side panels, make sure that all the parts sit flush to one another. Your assembly should look like the picture below:



STEP 11

Fasten the **INDAUX CAMS** to secure assembly **LEFT AND RIGHT PANEL + DOWELS SUB ASS**. Finally screw in the **SQUARE HEAD WOOD SCREW** as seen in the pictures below:



ITEM NO:	DRAWING NUMBER:	DESCRIPTION:	MATERIAL:	QTY:
1	(GWB-007-001-003)	BACKING	4mm MELAMINE	1
2	(GWB-007-001-002) SUB ASS	LEFT AND RIGHT PANEL + DOWELS SUB ASS	N/A	1
3	(GWB-007-001-006) SUB ASS	SIDES + CLEATS + TOP AND BOTTOM PANEL SUB ASS	N/A	1
4	N/A	SQUARE HEAD WOOD SCREW 6mm X 30mm	N/A	4

REVISION	
CODE: GWB-007-001	TITLE: BACKING BOARD + RIGHT PANEL SUB ASS
METRIC ALL DIMENSIONS ARE IN mm	PART NUMBER: (GWB-007-001-007) SUB ASS SCALE : 1:8 (UOS)
	NAME DATE
	ENGINEERED BY: KOSTA KOUMENTAKOS 01-06-2016
	DRAWN BY: KOSTA KOUMENTAKOS 01-06-2016
	APPROVED BY: ANASTASIOS ASTERIOU 01-06-2016



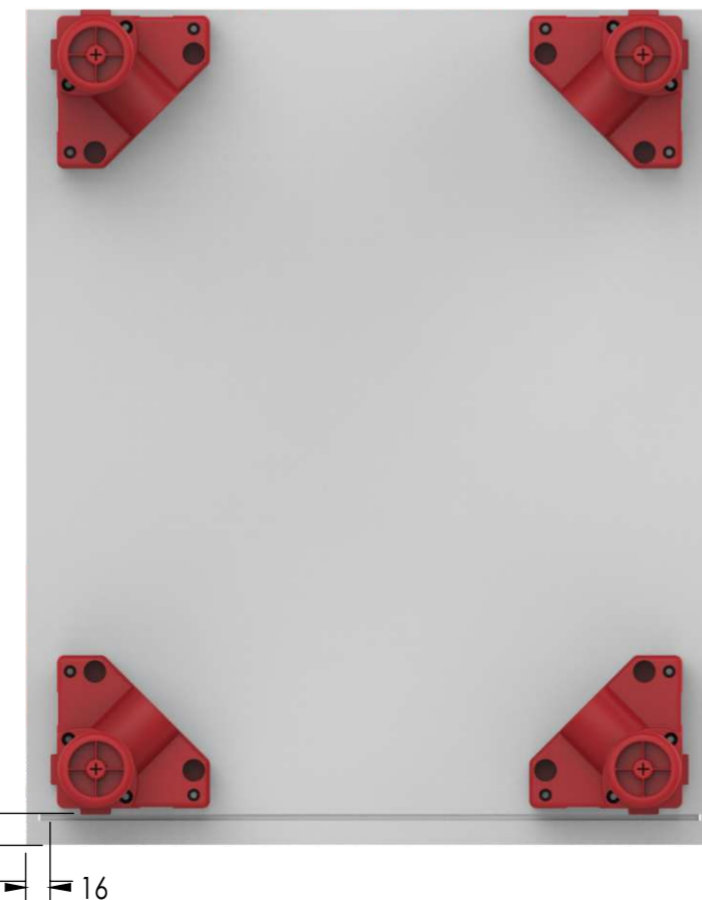
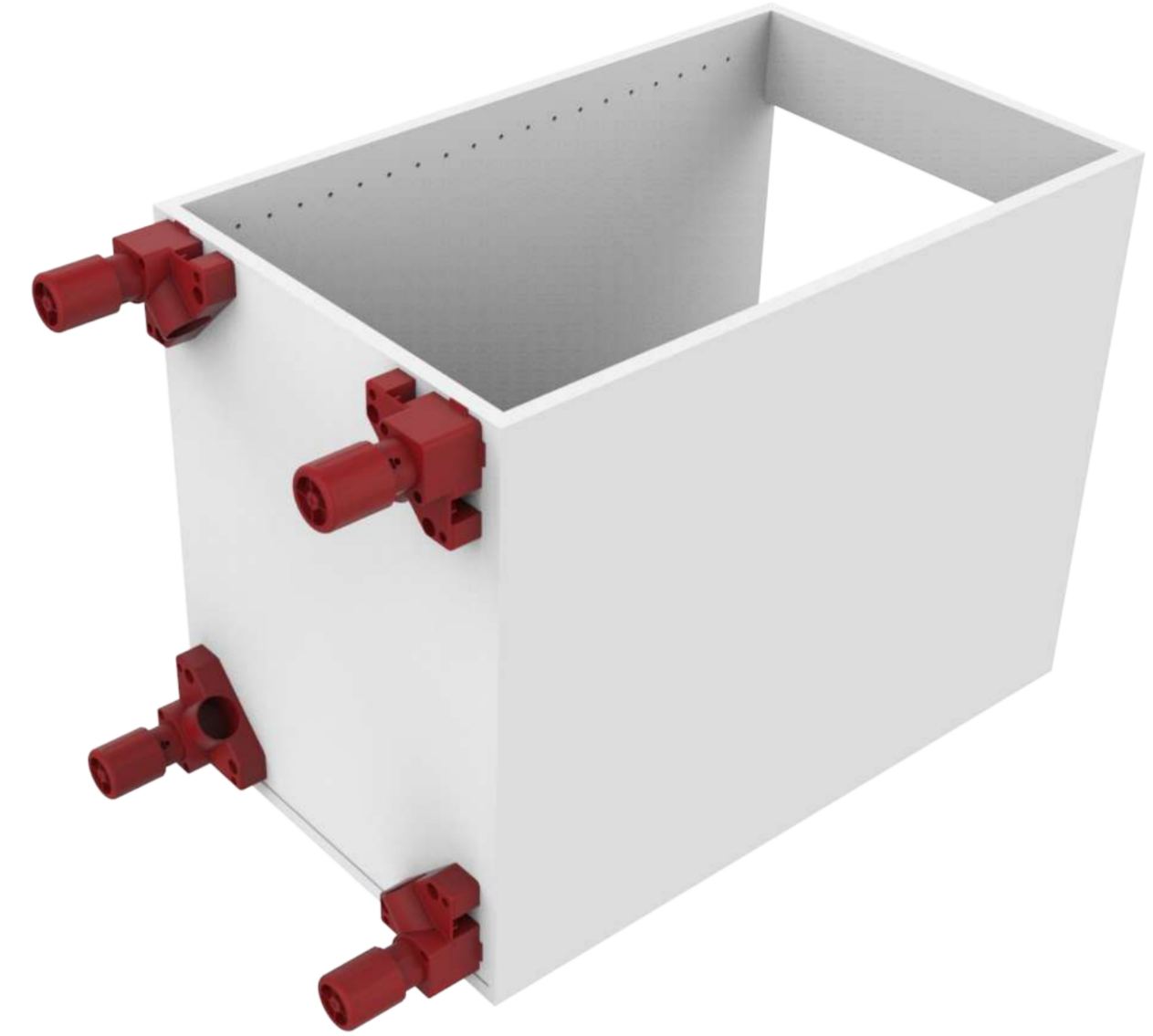
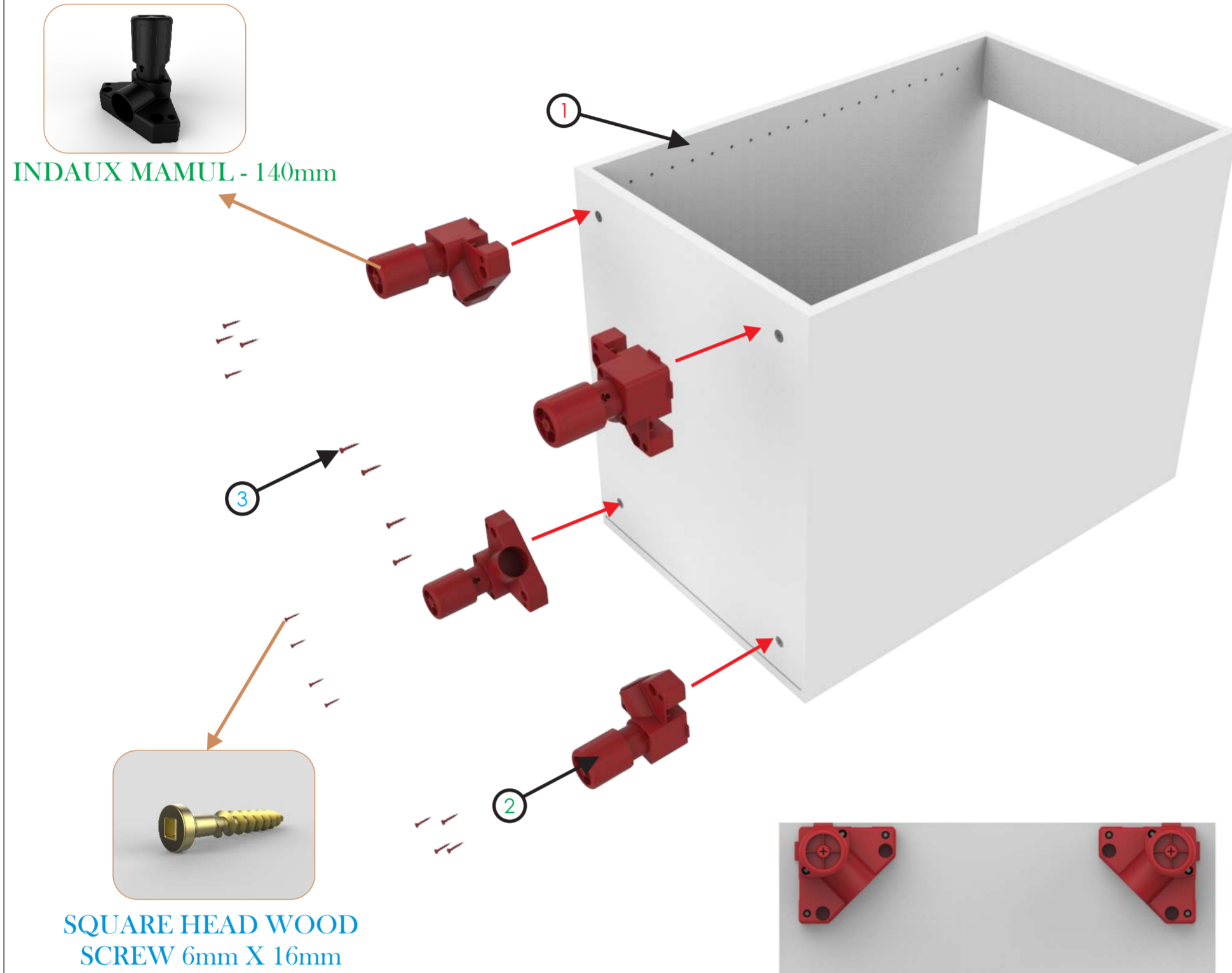
Designed By:
KSTENE
INDUSTRIAL DESIGN & ENGINEERING
INNOVATION INGENUITY INSPIRATION

* RESEMBLES CRITICAL DIMENSIONS
RESEMBLES ECR CHANGES



STEP 12

Screw the **INDAUX MAMUL** feet into the unit using parts **SQUARE HEAD WOOD SCREW** as shown below:



WARNING

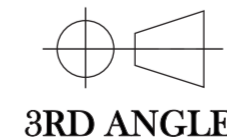
Assemble the **INDAUX MAMUL** feet in the positioning/spacing as shown in the picture on the right:

ITEM NO:	DRAWING NUMBER:	DESCRIPTION:	MATERIAL:	QTY:
1	(GWB-007-001-007) SUB ASS	BACKING BOARD + RIGHT PANEL SUB ASS	N/A	1
2	N/A	INDAUX MAMUL - 140mm	N/A	4
3	N/A	SQUARE HEAD WOOD SCREW 6mm X 12mm	N/A	16



Designed By:
KSTENE
INDUSTRIAL DESIGN & ENGINEERING
INNOVATION INGENUITY INSPIRATION

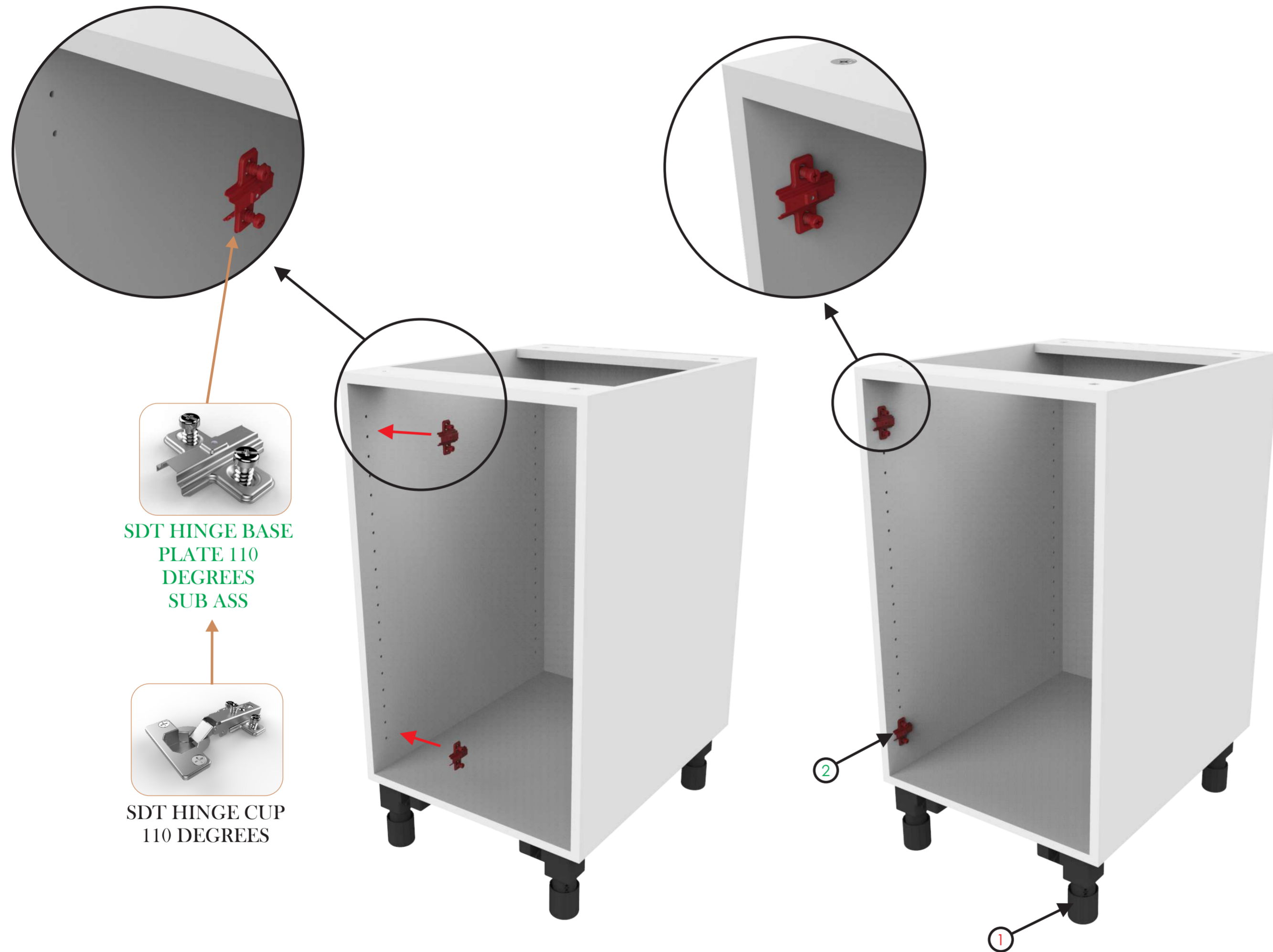
* RESEMBLES CRITICAL DIMENSIONS
RESEMBLES ECR CHANGES



REVISION	
CODE: GWB-007-001	TITLE: FEET SUB ASS
METRIC ALL DIMENSIONS ARE IN mm	PART NUMBER: (GWB-007-001-008) SUB ASS
	SCALE : 1:8 (UOS)
	NAME
	DATE
	ENGINEERED BY: KOSTA KOUMENTAKOS
	DATE
	DRAWN BY: KOSTA KOUMENTAKOS
	DATE
	APPROVED BY: ANASTASIOS ASTERIOU
	DATE

STEP 13

Screw parts **SDT HINGE BASE PLATE 110 DEGREES SUB ASS** into the unit as shown below:



NOTE:

Count 14 holes from the top and bottom of the first line of holes. At the 14th hole you will assemble the **SDT HINGE BASE PLATE 110 DEGREES SUB ASS**

ITEM NO:	DRAWING NUMBER:	DESCRIPTION:	MATERIAL:	QTY:
1	(GWB-007-001-008) SUB ASS	FEET SUB ASS	N/A	1
2	N/A	SDT HINGE BASE PLATE 110 DEGREES SUB ASS	N/A	4

REVISION	
CODE: GWB-007-001	TITLE: HINGE BASE PLATE SUB ASS
METRIC ALL DIMENSIONS ARE IN mm	PART NUMBER: (GWB-007-001-009)SUB ASS SCALE : 1:8 (UOS)
	NAME DATE
	ENGINEERED BY: KOSTA KOUMENTAKOS 01-06-2016
	DRAWN BY: KOSTA KOUMENTAKOS 01-06-2016
	APPROVED BY: ANASTASIOS ASTERIOU 01-06-2016



Designed By:
KSTENE
INDUSTRIAL DESIGN & ENGINEERING
INNOVATION INGENUITY INSPIRATION

* RESEMBLES CRITICAL DIMENSIONS
RESEMBLES ECR CHANGES



ECR: N/A DATE: 24-02-2016

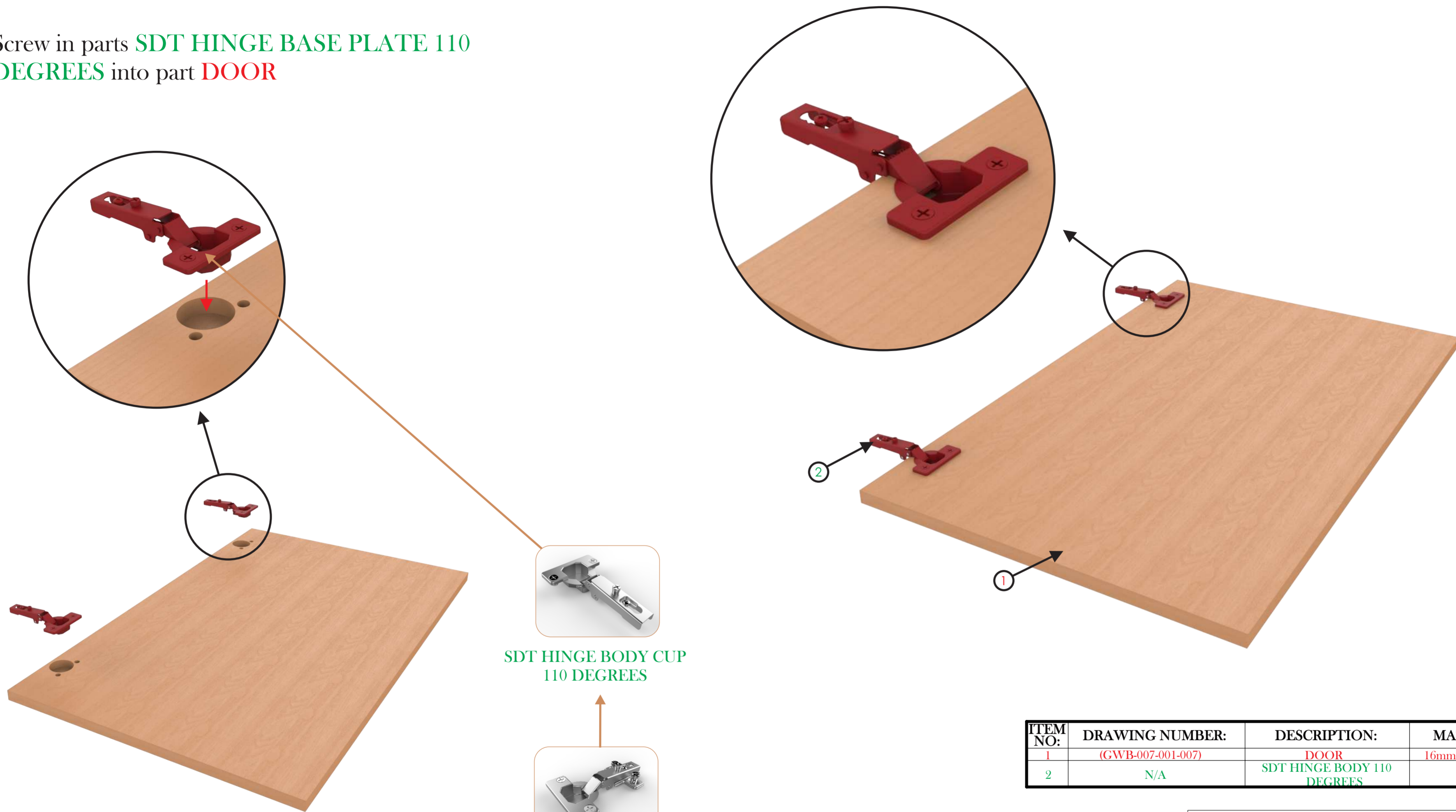
LEVEL: 1

© ALL COPYRIGHTS BELONG TO OIKO, DATE 01-06-2016

PAGE: 9 OF 12

STEP 14

Screw in parts **SDT HINGE BASE PLATE 110 DEGREES** into part **DOOR**



**SDT HINGE BODY CUP
110 DEGREES**



**SDT HINGE CUP
110 DEGREES**

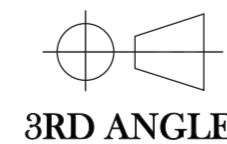
ITEM NO:	DRAWING NUMBER:	DESCRIPTION:	MATERIAL:	QTY:
1	(GWB-007-001-007)	DOOR	16mm MELAMINE	1
2	N/A	SDT HINGE BODY 110 DEGREES	N/A	4

REVISION		
CODE: GWB-007-001	TITLE: DOOR + HINGE BRIDGE SUB ASS	
	PART NUMBER: (GWB-007-001-010) SUB ASS	SCALE : 1:8 (UOS)
METRIC ALL DIMENSIONS ARE IN mm	NAME	DATE
	ENGINEERED BY: KOSTA KOUMENTAKOS	01-06-2016
	DRAWN BY: KOSTA KOUMENTAKOS	01-06-2016
3RD ANGLE	APPROVED BY: ANASTASIOS ASTERIOU	01-06-2016



Designed By:
KSTENE
INDUSTRIAL DESIGN & ENGINEERING
INNOVATION INGENUITY INSPIRATION

* RESEMBLES CRITICAL DIMENSIONS
RESEMBLES ECR CHANGES



ECR: N/A DATE: 24-02-2016

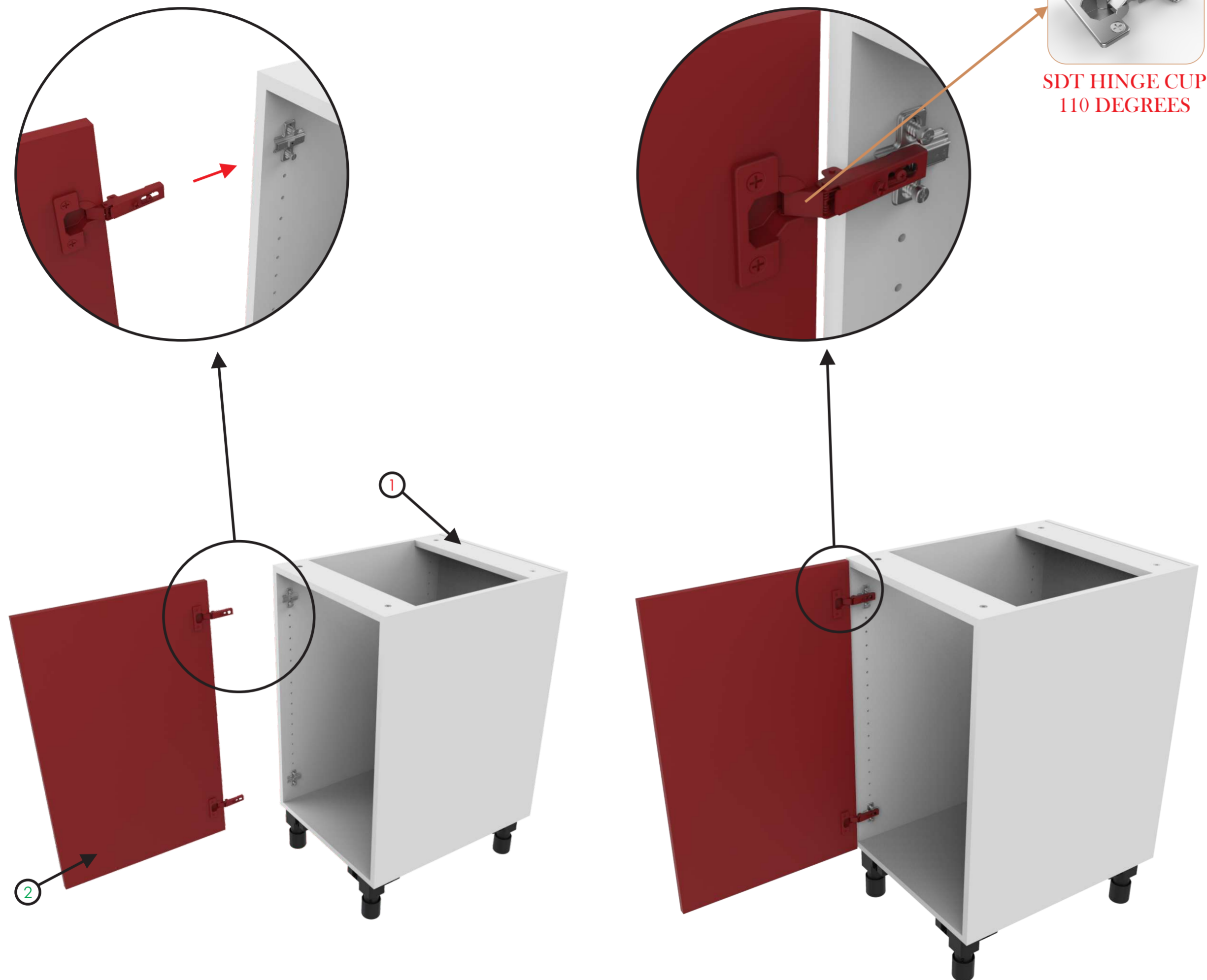
LEVEL: 1

© ALL COPYRIGHTS BELONG TO OIKO, DATE 01-06-2016

PAGE: 10 OF 12

STEP 15

Attach sub assembly **DOOR + HINGE BRIDGE SUB ASS** to sub assembly **HINGE BASE PLATE SUB ASS**. This is done by clipping the 2 halves of the hinge together.



STEP 16

Align the door to the body by adjusting the screws on the hinge.



ITEM NO:	DRAWING NUMBER:	DESCRIPTION:	MATERIAL:	QTY:
1	(GWB-007-001-009) SUB ASS	HINGE BASE PLATE SUB ASS	N/A	1
2	(GWB-007-001-010) SUB ASS	DOOR + HINGE BRIDGE SUB ASS	N/A	1

REVISION		
CODE: GWB-007-001	TITLE: DOOR + BODY SUB ASS	
	PART NUMBER: (GWB-007-001-011) SUB ASS	SCALE : 1:8 (UOS)
METRIC ALL DIMENSIONS ARE IN mm	NAME	
	ENGINEERED BY: KOSTA KOUMENTAKOS	DATE 01-06-2016
	DRAWN BY: KOSTA KOUMENTAKOS	DATE 01-06-2016
APPROVED BY: ANASTASIOS ASTERIOU		DATE 01-06-2016



Designed By:
KSTENE
INDUSTRIAL DESIGN & ENGINEERING
INNOVATION INGENUITY INSPIRATION

* RESEMBLES CRITICAL DIMENSIONS
RESEMBLES ECR CHANGES



ECR: N/A DATE: 24-02-2016

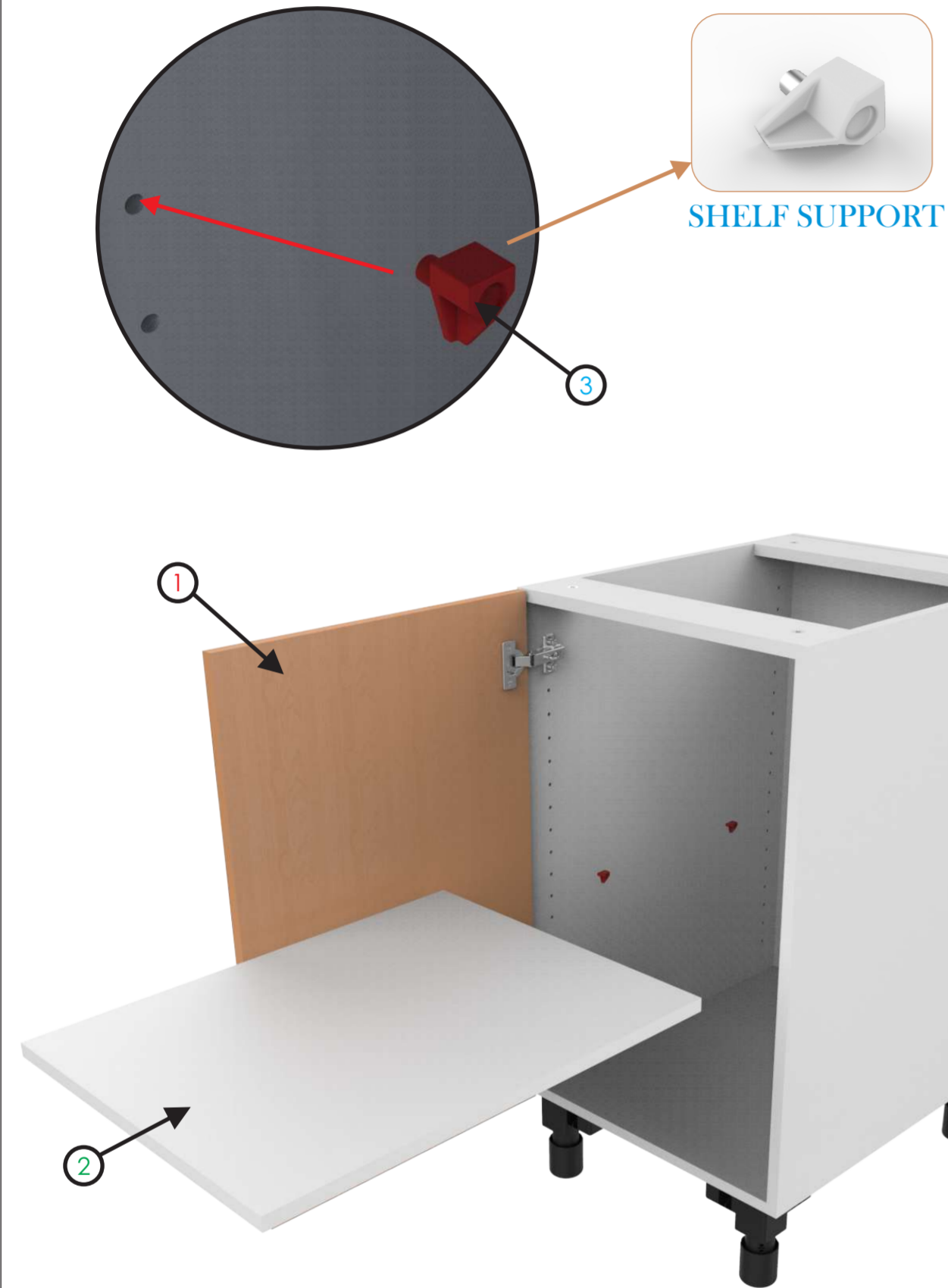
LEVEL: 1

© ALL COPYRIGHTS BELONG TO OIKO, DATE 01-06-2016

PAGE: 11 OF 12

STEP 17

Place parts **SHELF SUPPORTS** in the pre-drilled holes located on the inside of the sub assembly **DOOR + BODY SUB ASS**



STEP 18

Insert parts **SHELF** inside the unit as shown below:

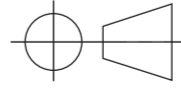


STEP 19

Your unit is now complete. Finish it off by adding a handle of your choice.



ITEM NO:	DRAWING NUMBER:	DESCRIPTION:	MATERIAL:	QTY:
1	(GWB-007-001-011) SUB ASS	DOOR + BODY SUB ASS	N/A	1
2	(GWB-007-001-005)	SHELF	16mm MELAMINE	1
3	N/A	SHELF SUPPORT	N/A	4

REVISION	
CODE: GWB-007-001	TITLE: SHELF SUB ASS
METRIC ALL DIMENSIONS ARE IN mm	PART NUMBER: (GWB-007-001-012) SUB ASS SCALE : 1:8 (UOS)
 3RD ANGLE	NAME
	ENGINEERED BY: KOSTA KOUMENTAKOS
	DATE
	ENGINEERED BY: KOSTA KOUMENTAKOS
	DATE
	APPROVED BY: ANASTASIOS ASTERIOU
	DATE



Designed By:
KSTENE
INDUSTRIAL DESIGN & ENGINEERING
INNOVATION INGENUITY INSPIRATION

* RESEMBLES CRITICAL DIMENSIONS
RESEMBLES ECR CHANGES

ECR: N/A DATE: 24-02-2016

LEVEL: 1

© ALL COPYRIGHTS BELONG TO OIKO, DATE 01-06-2016

PAGE: 12 OF 12